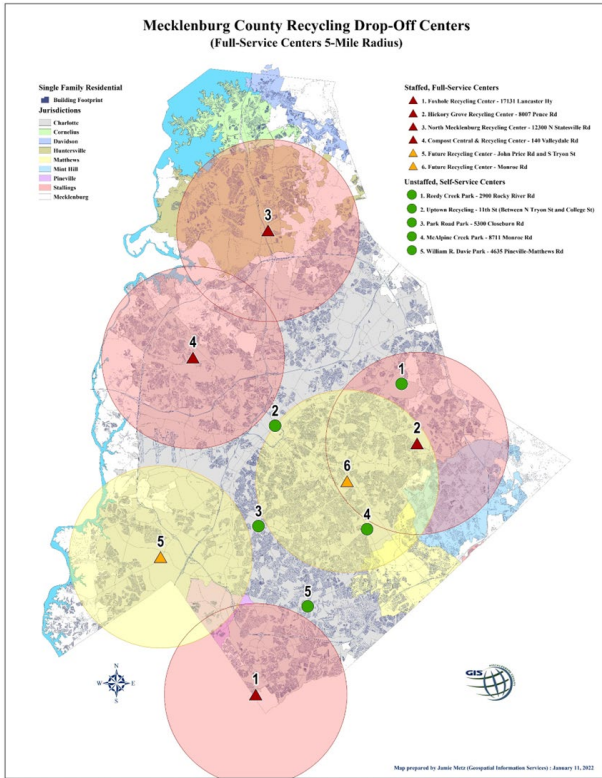




**MECKLENBURG COUNTY**  
**SOLID WASTE MANAGEMENT PROGRAM**

**OUR PATH TO BECOMING A STEWARD**



# Mecklenburg County Solid Waste Management FY25 Program Metrics



## Mecklenburg County Solid Waste

980-314-DUMP | WipeOutWaste.com

Total Tons Diverted in FY25 - 263,348



By directing materials to recycling, from Landfilling

Total System Tons Managed



## FY25 PROGRAM METRICS

Operating Budget **50.2M** 146 Staff Positions

### Enhanced Recycling

White Rigid Foam	42 tons
Shredded Paper	22 tons
Hard Back Books	70 tons
Textiles	80 tons
Food Scraps	2 tons
Clean Wood Waste	492 tons

### Material Recycling Facility (MRF)

Meck County Recycling	63,457 tons
Out of County Recycling	15,453 tons
Concrete Recycled	9,862 tons



## Full Service Centers

Total Customers

FY24	FY25
853,543	964,461

Recycled Items Tonnage (tons)

	FY24	FY25
Electronics	446 ↓↓↓↓	455 ↓↓↓↓
Household Hazardous Waste	645 ☠☠☠☠	687 ☠☠☠☠
Yard Waste	131,073 🍃🍃🍃🍃	138,314 🍃🍃🍃🍃
Tires	26,267 🚗🚗🚗🚗	26,801 🚗🚗🚗🚗
Scrap Metals	4,289	4,832

Outreach to Over 1 Million Residents

## Mecklenburg County Recycling Drop Off Centers

# WHO DOES MECKLENBURG COUNTY SOLID WASTE SERVE?

- We serve all residents and businesses in Mecklenburg County, as well as some outside of Mecklenburg County.
  - Out of County Stickers – residential users from other counties.
  - Recycling Customers from Cabarrus County, Lincoln County, Union County.
- Our Funding comes from 3 areas:
  - Fees charged at our Centers
  - Residential Availability Fee charged to all “Residential Properties”
  - State annual “rebates” and sometimes ‘grants’



# WHERE DO YOUR CURBSIDE RECYCLABLES GO?

- All curbside collected recyclables in Mecklenburg County currently go to our Pence Road Materials Recycling Facility (MRF).
- At the MRF, products are separated into their individual commodity types. Aluminum Cans, Plastic Bottles, Cardboard, etc.



# MECKLENBURG COUNTY SOLID WASTE “RECYCLES” OR “DIVERTS” MANY NON-CURBSIDE RECYCLABLES

- Concrete
- Drywall
- Tires
- Appliances and Metal
- Computers & Electronics
- Paint
- Fertilizers & Pesticides



# MECKLENBURG COUNTY SOLID WASTE ENHANCED RECYCLING PROGRAM

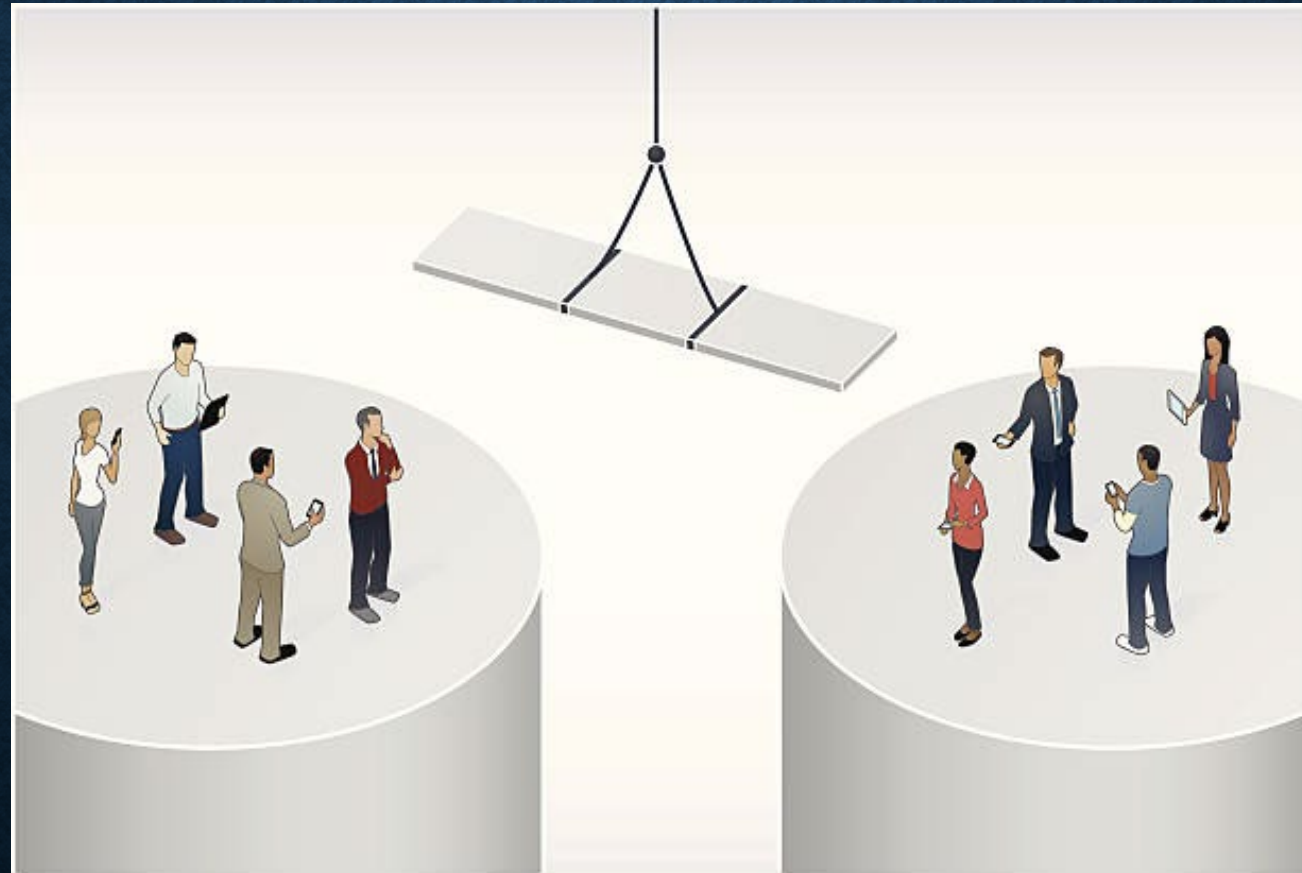
- Books
- Textiles
- Foam
- Food Waste
- Bicycles
- Solar Panels
- Furniture & Lumber
- Plastic Film/Bags (Coming Soon!)



# THE JOURNEY BEGINS



# MECKLENBURG COUNTY SOLID WASTE IN 2005





# MIRAMAR LANDFILL SAN DIEGO, CA



## ENVIRONMENTAL POLICY

### REFUSE DISPOSAL DIVISION

The Refuse Disposal Division of the City of San Diego's Environmental Services Department is entrusted with providing high quality solid waste disposal services for the citizens of San Diego and the greater San Diego metropolitan area. We are dedicated to carrying out this responsibility in a manner that demonstrates true leadership in environmental management while continuing to provide the highest level of service. By implementing and maintaining an Environmental Management System, we are committed to an ongoing effort of promoting environmental responsibility as an organization as well as emphasizing a heightened environmental awareness to all interested parties and stakeholders.

We will demonstrate our commitment to this policy through:

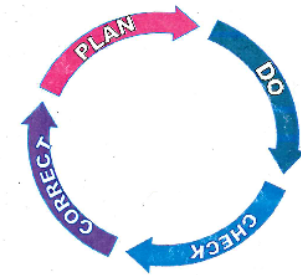
- Regulatory Compliance – We will meet or exceed all applicable regulatory requirements,
- Prevention of Pollution – We will identify and prevent or minimize pollution in all areas attributed to our operations, wherever feasible, and
- Continual Improvement – We will continue to seek out ways to improve our environmental performance using this policy as the basis upon which we set our objectives and targets.

This policy will be conveyed to all Refuse Disposal Division staff, our consultants and contractors and made available to regulatory agencies, the public, or other interested parties upon request.



# DEVELOPMENT OF THE EMS

- Development of EMS Began in January 2006
- Focus on Foxhole Landfill – Landfill Operations Only
- First EMS Policy Signed May 24, 2006
- ISO 14001 Certification – August 15, 2007



Mecklenburg County  
Foxhole Landfill  
ISO 14001:2004 EMS Project  
January 2006 – July 2006



# ORIGINAL EMS FENCE LINE

- This is the original fence line map for the Foxhole Landfill.
- It excludes the areas we used for Yard Waste and Recycling.
- Our Internal and 3<sup>rd</sup> Part Audits only included areas in our Fence line.



FOXHOLE LANDFILL ISO 14001 FENCELINE MAP

Mecklenburg County  
Solid Waste Services  
700 North Tryon Street  
Charlotte, North Carolina 28202



# Building Out the EMS

## Foxhole Recycling and Yard Waste



- We quickly realized how beneficial an Environmental Management System was for Landfill operations.
- We expanded the EMS to include Yard Waste and Recycling at the Foxhole
- We were recertified with our new expanded scope by ISO14001 in July 2010.



# Expansion of the EMS to Additional Facilities

- Hickory Grove and North Mecklenburg Recycling Centers
- Included in the EMS Fenceline in June 2012



# Expansion of the EMS to Additional Facilities

- Tire and Metal Recycling Facility was added to the EMS in 2013.



# “PARTNERING” WITH ESI



- March 2009 – Environmental Stewardship Initiative brought to EMS Team to Discuss Participation
- Decision was made in April 2009 to apply as a Partner
- Became Partner in December 2009
- Discussed further action with ESI in 2010 but determined it wasn't the right time
- ESI provided support in expanding the EMS to other facilities



# ESI FE AUDITS: THE ROAD TO A RISING STEWARD



- May 2016: External Audit for ISO 14001 led to search for alternatives
- August 2016: ESI Functional Equivalency Audits???
- December 15, 2016: ISO 14001 Certification should be abandoned while maintaining EMS under ESI's FFE Audit Program
- February 9, 2017: Hmmm...Rising Steward???





# ESI – Rising Steward

- June 23, 2017: Rising Steward Achieved
- July 18, 2017: First Successful ESI FE Audit



## ESI Functionally Equivalent Checklist

The ESI Functionally Equivalent Checklist is meant for use as a guide by ESI staff to determine if an organization has a functioning environmental management system (EMS). Text below and requirements for each of the elements is summarized from the ISO 14001:2004 standard that is the reference document. This checklist should be used consistent with the ESI Functionally Equivalent Verification Protocol.

Each requirement must be checked for the EMS to be approved. An approved EMS is required for ESI Partners that are not ISO 14001 certified prior to application for Rising Steward or Steward.

Site Name: Mecklenburg County Solid Waste

Location: Charlotte (Metal & Tire) Visit Date: 7/18/17

✓	Requirements	Comments
4.1 General Requirements		
<input checked="" type="checkbox"/>	Define and document the scope of the EMS	Evidence: EMS scope is documented in EMS Manual (Rev. 15), Section 1.3.  OFI: EMS scope was also noted in Section 2: EMS-Overview: Aspects, Impacts, Objectives, Targets, Programs, Rev. 7. This document was almost identical to scope noted in EMS Manual except that paragraph 4 within this document provided a clearer description of "fence line" expansion than the manual. Suggest consolidating so EMS scope appears only in one location.
4.2 Environmental Policy		
<input checked="" type="checkbox"/>	Commitment to continual improvement, prevention of pollution, and compliance with applicable legal and other requirements	OFI: The policy limits the commitment to "other" requirements to 'industrial standards' but the organization does subscribe to additional programs (like ESI). You might want to broaden this statement to include other programs to which the organization subscribes.
<input checked="" type="checkbox"/>	Documented, implemented and maintained	Evidence: EMS Manual _ rev. 15 Chapter 2
<input checked="" type="checkbox"/>	Communicated to all employees & contractors	Evidence: morning field meeting, employees sign policy, given to contractors,

# Building Out the EMS – Compost Central and Fleet

- Compost Central:
  - Newest Solid Waste Facility – Opened April 2017
  - Included Maintenance Operations
- Fleet Operations:
  - Transportation of recycling and solid waste from institutional buildings such as parks and schools
  - Not related to an actual facility



MeckNC.gov



# Building Out the EMS – Compost Central and Fleet

- Expanding the EMS to Compost Central and Fleet Operations was delayed
- Conversion to ISO 14001:2015 Standard
- COVID
- July 2022: Formal Inclusion of Fleet Operations and Compost Central Into the EMS



MeckNC.gov



COMPOST CENTRAL - 140 VALLEYDALE ROAD  
EMS FENCELINE MAP

Mecklenburg County  
Solid Waste Services  
2145 Santa Avenue  
Charlotte, NC 28205

Map prepared by Geospatial Information Services - May 26, 2022

Scale: 1in = 100ft

Ortho Photography: March 2022

# ESI –Steward

Why become an Environmental Steward?



# ESI –Steward

On December 2, 2024, Mecklenburg County Solid Waste Operations became a Steward

Our Ceremony was on July 28, 2025



# QUESTIONS?

- Amber Grzymski – [Amber.Grzymski@MeckNC.gov](mailto:Amber.Grzymski@MeckNC.gov)
- Darren Steinhilber – [Darren.Steinhilber@MeckNC.gov](mailto:Darren.Steinhilber@MeckNC.gov)

[www.meckems.com](http://www.meckems.com)