

NC State Ports Variance Request

April 17, 2019



- Setback Points
 - Right-of-Way
 - Harborlines
 - Disposal Areas
 - Navigation Channels
 - Setbacks
- Last Update: 19 Aug 2011



Google earth

© 2015 Google



- Navigation Channel Points
 - Setback Points
 - Right-of-Way
 - Harborlines
 - Disposal Areas
 - Navigation Channels
 - Setbacks
- Last Update: 19 Aug 2011

Eagle Island

Site Location



Cape Fear River

NCSPA



Google earth



Eagle Island

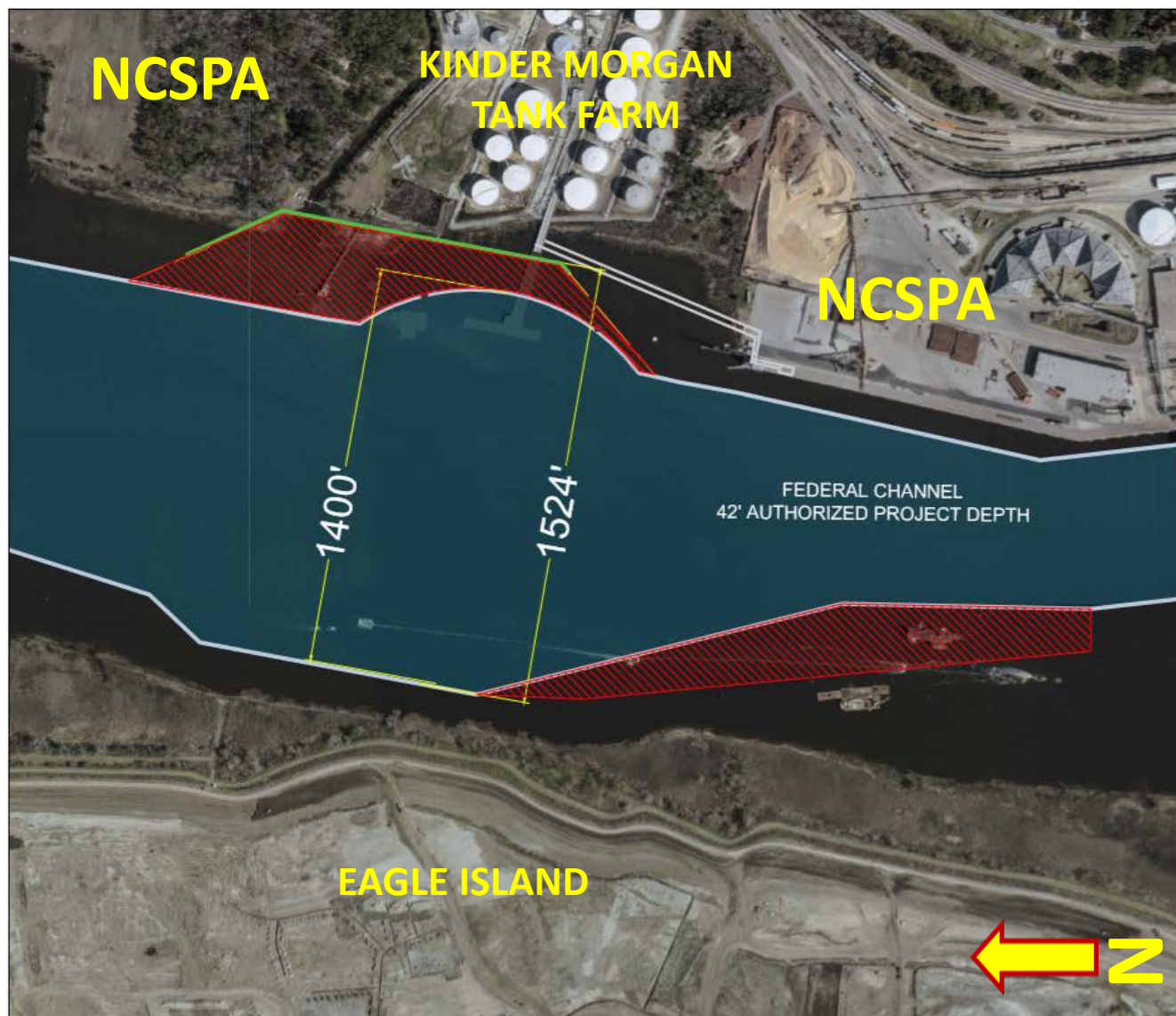
**Cape Fear River
Existing Turning Basin**

Site Location

NCSPA



PORT OF WILMINGTON - TURNING BASIN EXPANSION





NCSPA

**VIEW OF PROJECT SITE FACING EAST
DCM AERIAL PHOTOGRAPHY MARCH 13, 2013**



Approximate area of wetland impacts



Chevron Pier to be removed



NCSPA

VIEW OF PROJECT SITE FACING EAST

DCM AERIAL PHOTOGRAPHY OCTOBER 8, 2015



**Proposed Multi-
Use Terminal Site**

**Chevron Pier
to be removed**



VIEW OF PROJECT SITE FACING EAST
DCM AERIAL PHOTOGRAPHY MARCH 30, 2017





NCSPA

VIEW OF PROJECT SITE FACING EAST
DCM AERIAL PHOTOGRAPHY MARCH 30, 2017



NCSPA

VIEW OF PROJECT SITE FACING EAST
DCM AERIAL PHOTOGRAPHY JULY 19, 2018



VIEW OF PROJECT SITE FACING WEST

DCM AERIAL PHOTOGRAPHY JANUARY 29, 2013

Cape Fear River
Turning Basin – prior
to 2016 expansion

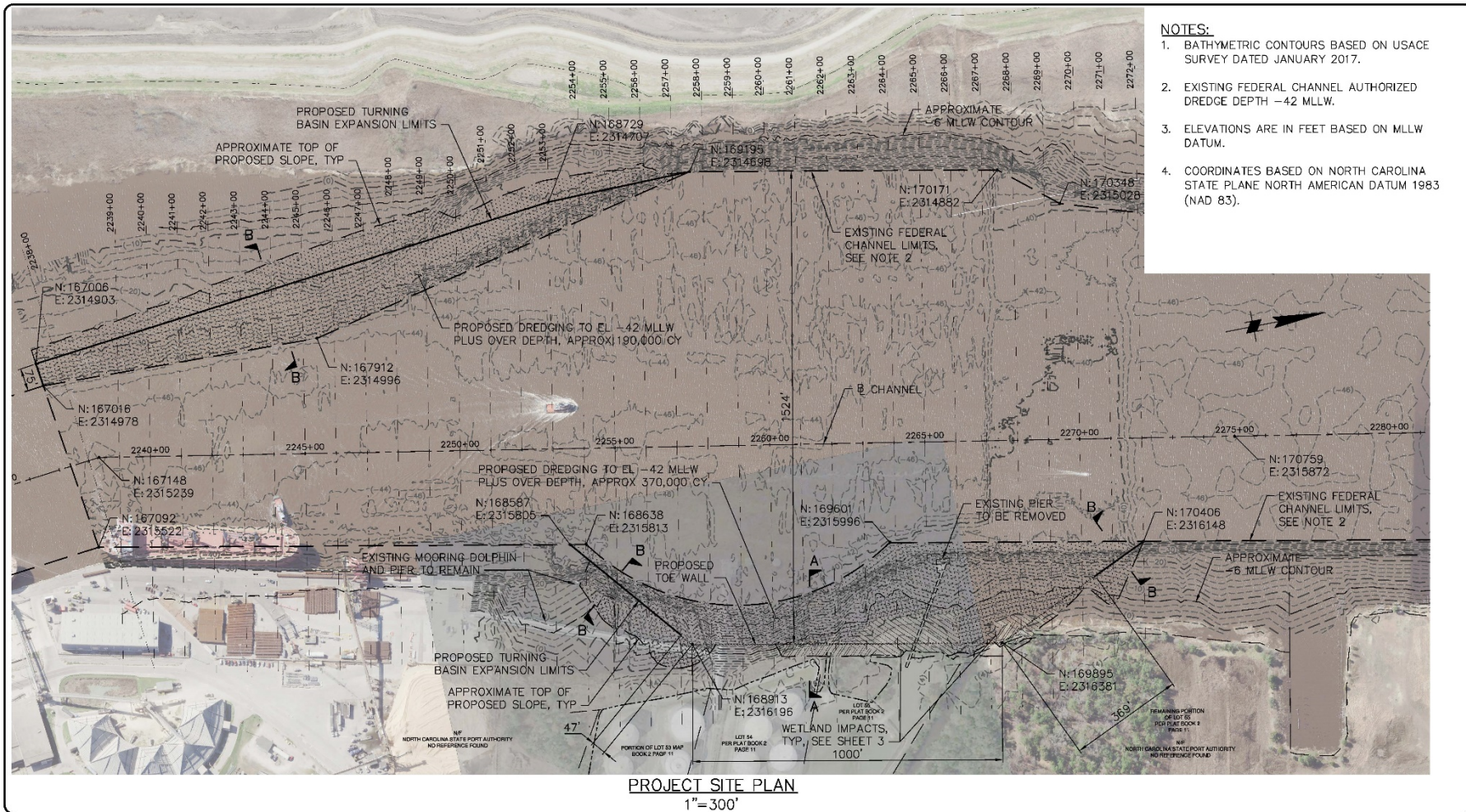
Site Location



NCSPA



VIEW OF PROJECT SITE FACING SOUTH
DCM PHOTOGRAPHY AUGUST 24, 2015



- NOTES:**
1. BATHYMETRIC CONTOURS BASED ON USACE SURVEY DATED JANUARY 2017.
 2. EXISTING FEDERAL CHANNEL AUTHORIZED DREDGE DEPTH -42 MLLW.
 3. ELEVATIONS ARE IN FEET BASED ON MLLW DATUM.
 4. COORDINATES BASED ON NORTH CAROLINA STATE PLANE NORTH AMERICAN DATUM 1983 (NAD 83).

PROJECT SITE PLAN
1"=300'

PROJECT TITLE: NORTH CAROLINA STATE PORTS AUTHORITY
WILMINGTON TERMINAL
TURNING BASIN EXPANSION

DATUM: MLLW

PREPARED BY: MOFFATT & NICHOL

PREPARED FOR: NORTH CAROLINA STATE PORTS AUTHORITY

NORTH CAROLINA PORTS

DATE: OCTOBER 2018

SHEET TITLE:
PROJECT SITE PLAN

0 150' 300'
1"=300'

SHEET
2
OF
16

File: G:\19119232_0810101_Active\Permit\1923208_P02_Plot\1911923208_4:16 PM by: KOONS, D.A.C. Saved: 10/23/2018 4:16 PM by: DKOONS



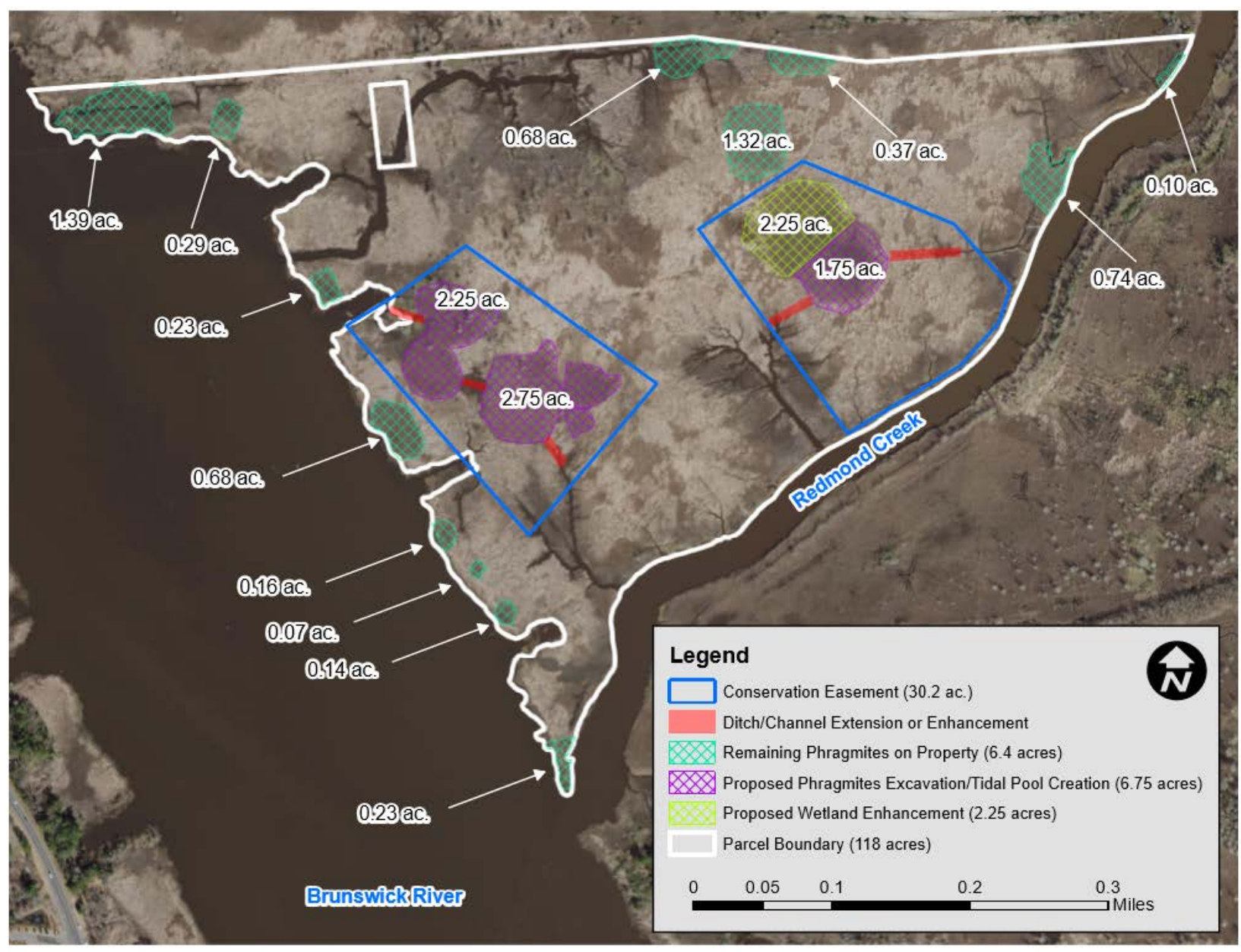
- Setback Points
 - Right-of-Way
 - Harborlines
 - Disposal Areas
 - Navigation Channels
 - Setbacks
- Last Update: 19 Aug 2011



Google earth

© 2015 Google






Legend

- Conservation Easement (30.2 ac.)
- Ditch/Channel Extension or Enhancement
- Remaining Phragmites on Property (6.4 acres)
- Proposed Phragmites Excavation/Tidal Pool Creation (6.75 acres)
- Proposed Wetland Enhancement (2.25 acres)
- Parcel Boundary (118 acres)

0 0.05 0.1 0.2 0.3 Miles



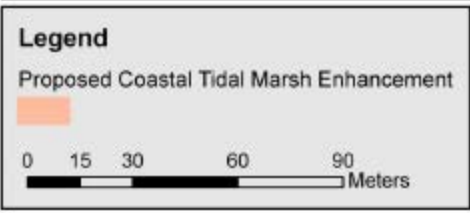


Figure 3. Proposed Existing *Phragmites* Dominated Wetland to be Enhanced to Coastal Marsh



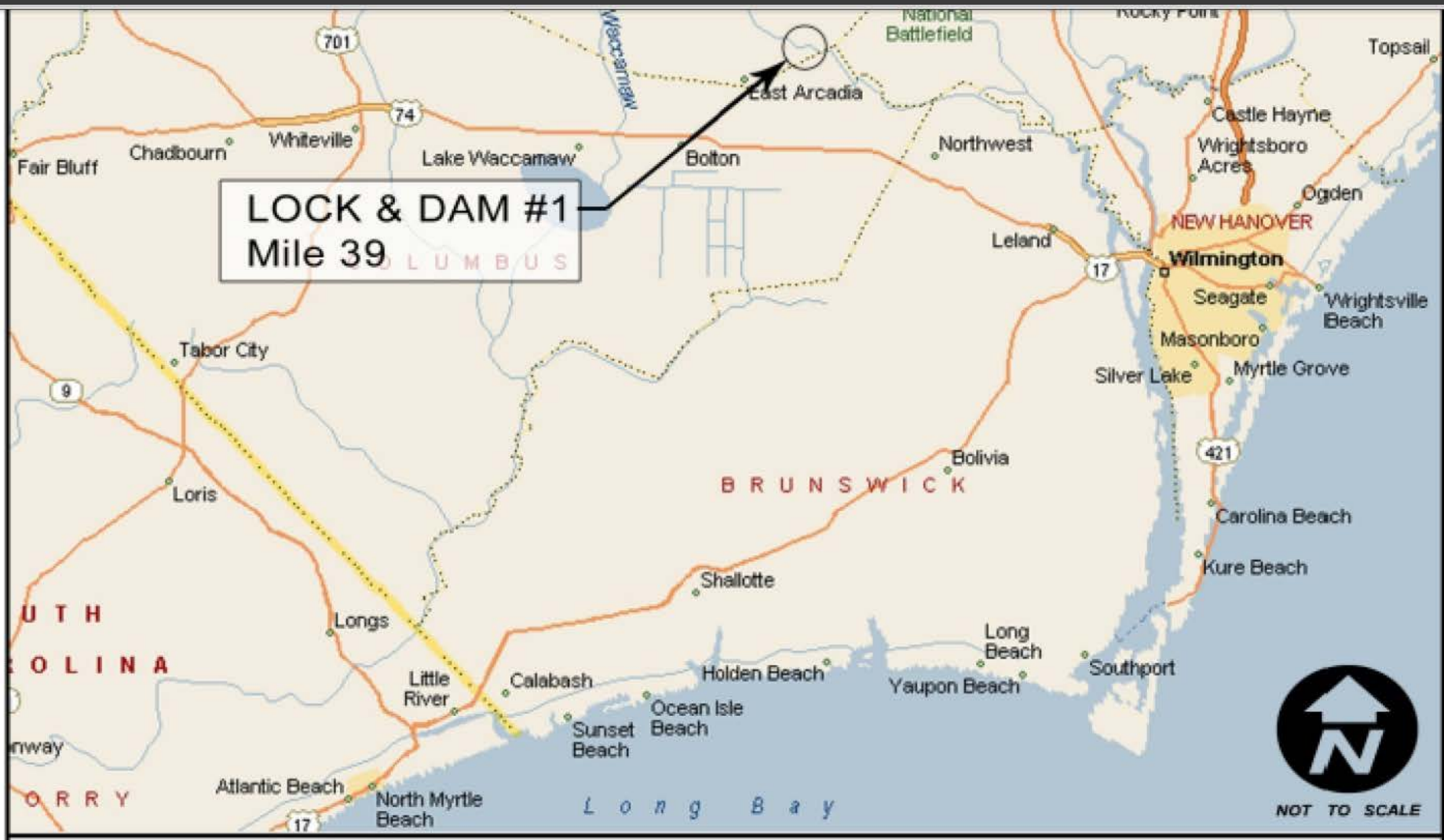


Figure 1. Location of Lock and Dams 1, 2, and 3 along the Cape Fear River, North Carolina.