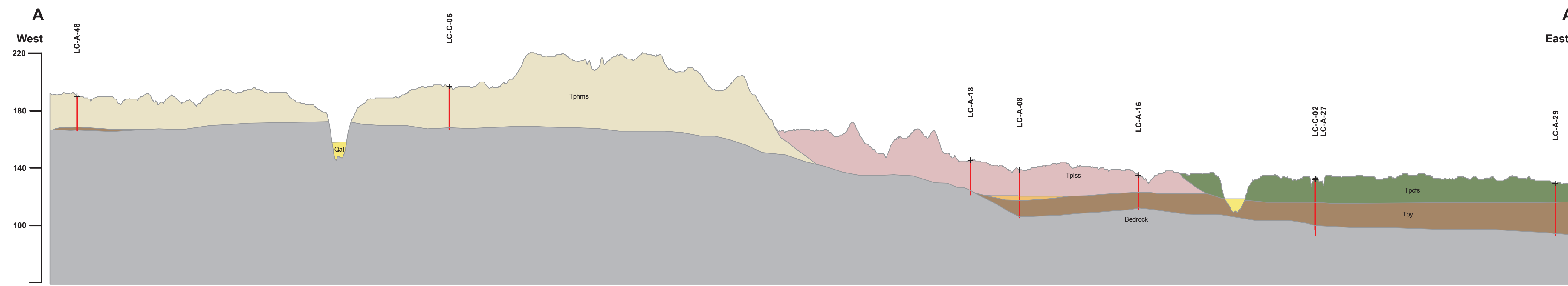


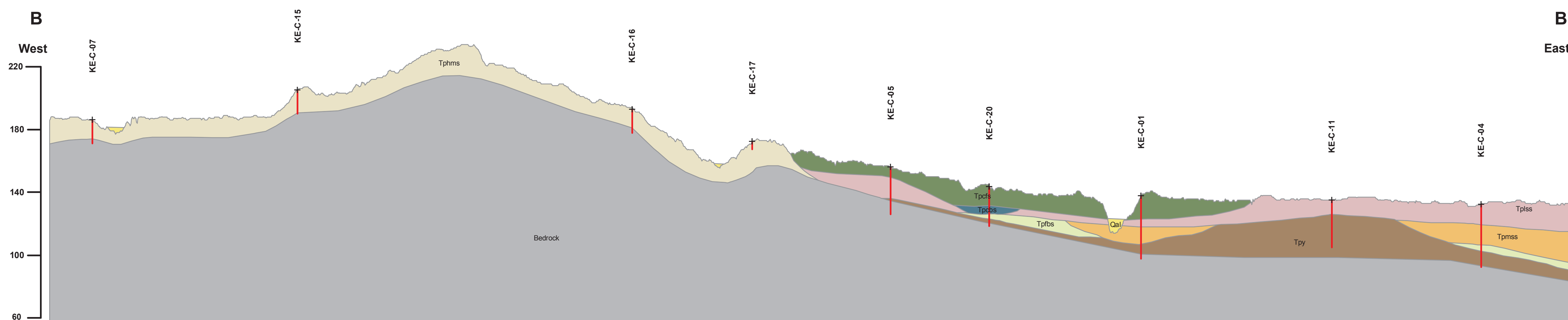
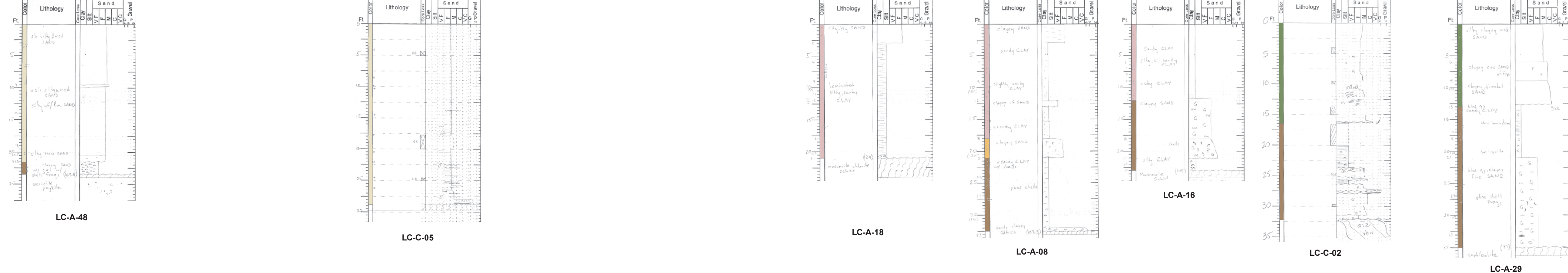


### Geologic Cross Sections A-A', B-B' and C-C' for Mapped Sedimentary Facies on the Lucama and Kenly East 7.5-minute Quadrangles, North Carolina

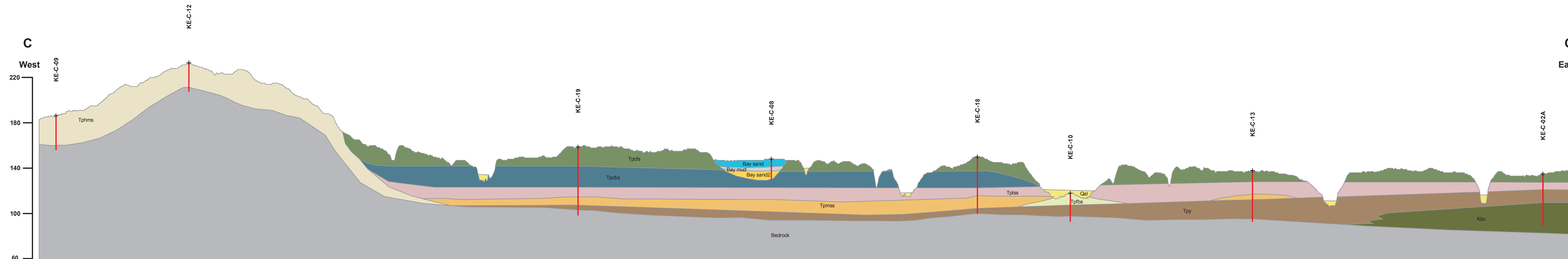
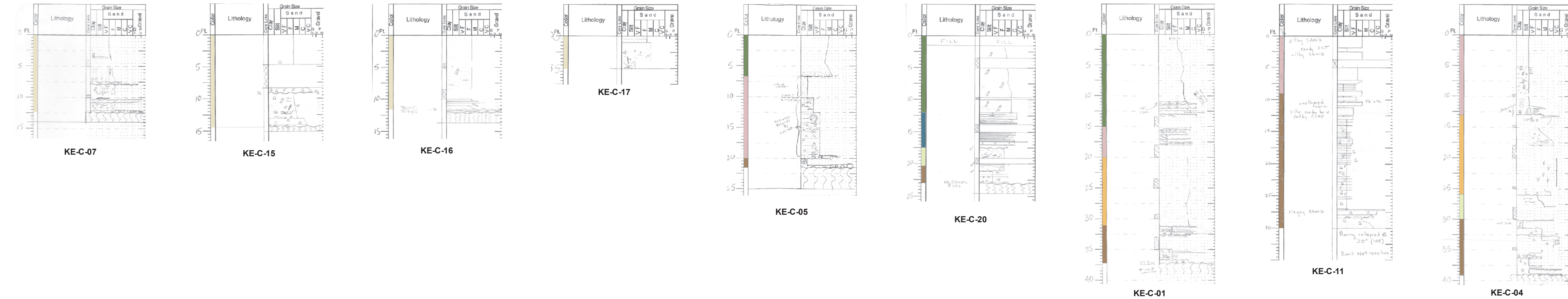
Norman K. Gay and John G. Nickerson



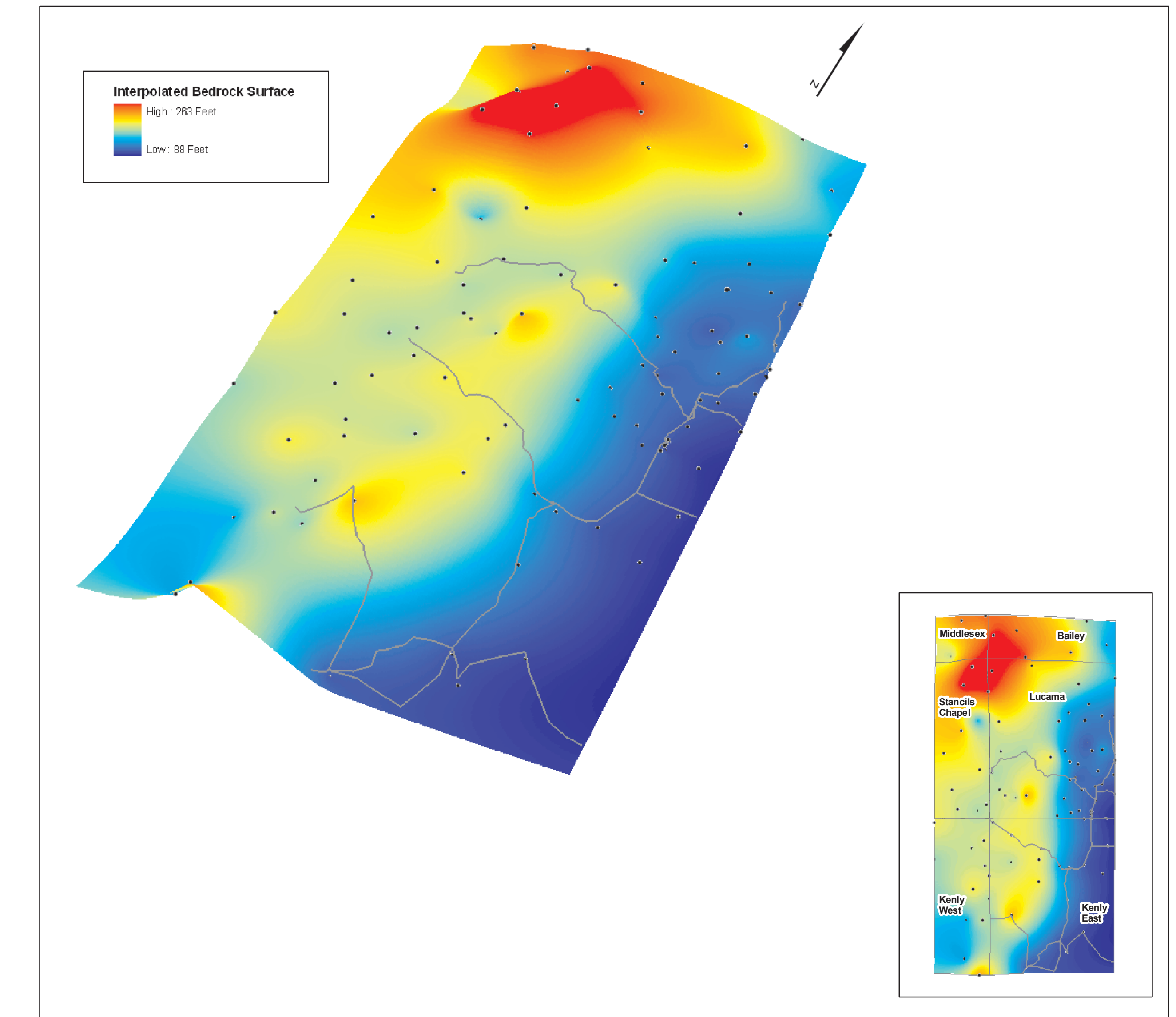
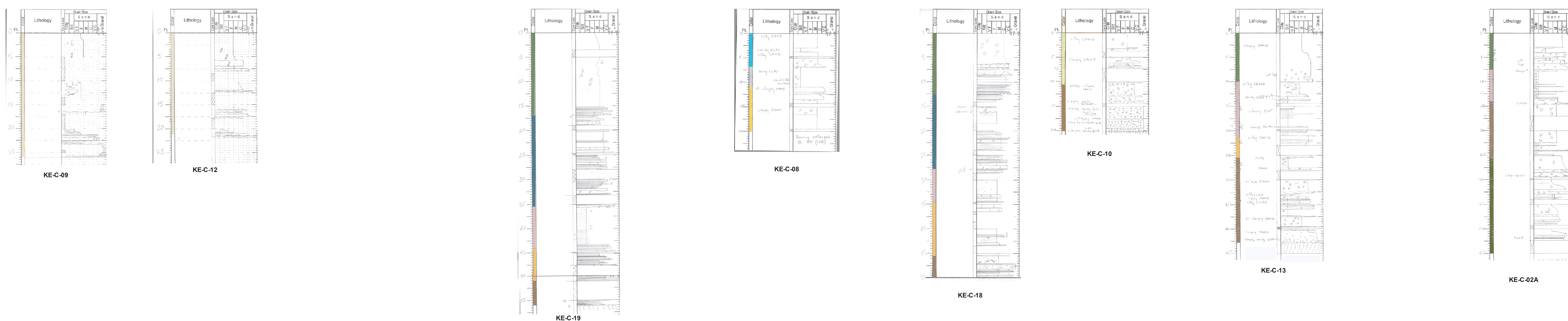
Cross section A - A'. Dip section from southern Lucama Quadrangle hole LC-A-48 to eastern boundary hole LC-A-29. Vertical exaggeration is 50x in order to show thin sedimentary cover that rests on undifferentiated crystalline bedrock. Elevation units are in feet.



Cross section B - B'. Dip section from northern Kenly East Quadrangle hole KE-C-07 to eastern boundary hole KE-C-04. Vertical exaggeration is 50x in order to show thin sedimentary cover that rests on undifferentiated crystalline bedrock. Elevation units are in feet.



Cross section C - C'. Dip section from southern Kenly East Quadrangle hole KE-C-09 to eastern boundary hole KE-C-02A. Vertical exaggeration is 50x in order to show thin sedimentary cover that rests on undifferentiated crystalline bedrock. Elevation units are in feet.



Simple Krig interpolation of the crystalline bedrock surface derived from project drill hole data. Cross section lines shown as well as drill hole locations. Note prominent bedrock low to the east that served as a depositional basin for much of the preserved Yorktown Formation. Bedrock high (Kenly Ridge) to the west protected much of the Yorktown from removal. Bedrock data derived from drill holes on the Middlesex, Bailey, Stanclis Chapel, Lucama, Kenly West, and Kenly East 1:24,000-scale quadrangles. Graphic is oriented NE-SW.



Images of typical lithofacies encountered. Scale bar is in centimeters.