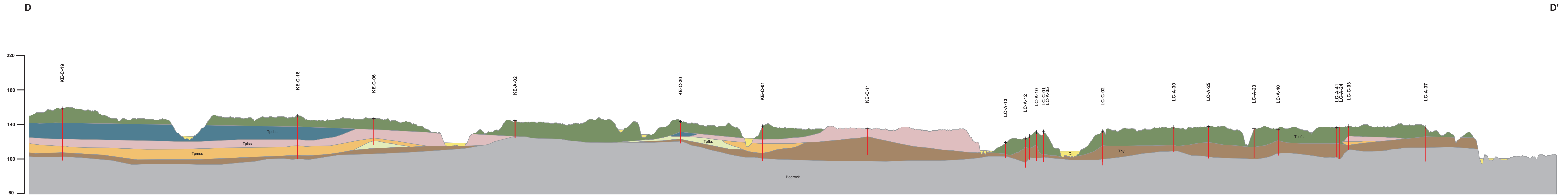


### Cross Section D - D' for Mapped Sedimentary Facies on the Kenly East and Lucama 7.5-minute Quadrangles, North Carolina.

Norman K. Gay and John G. Nickerson



Cross section D - D'. Strike section from southern Kenly East Quadrangle hole KE-C-19 north to Lucama hole LC-A-37. Horizontal scale = 1:24,000, vertical exaggeration is 50x in order to show thin sedimentary cover that rests on undifferentiated crystalline bedrock. Elevation units are in feet.

