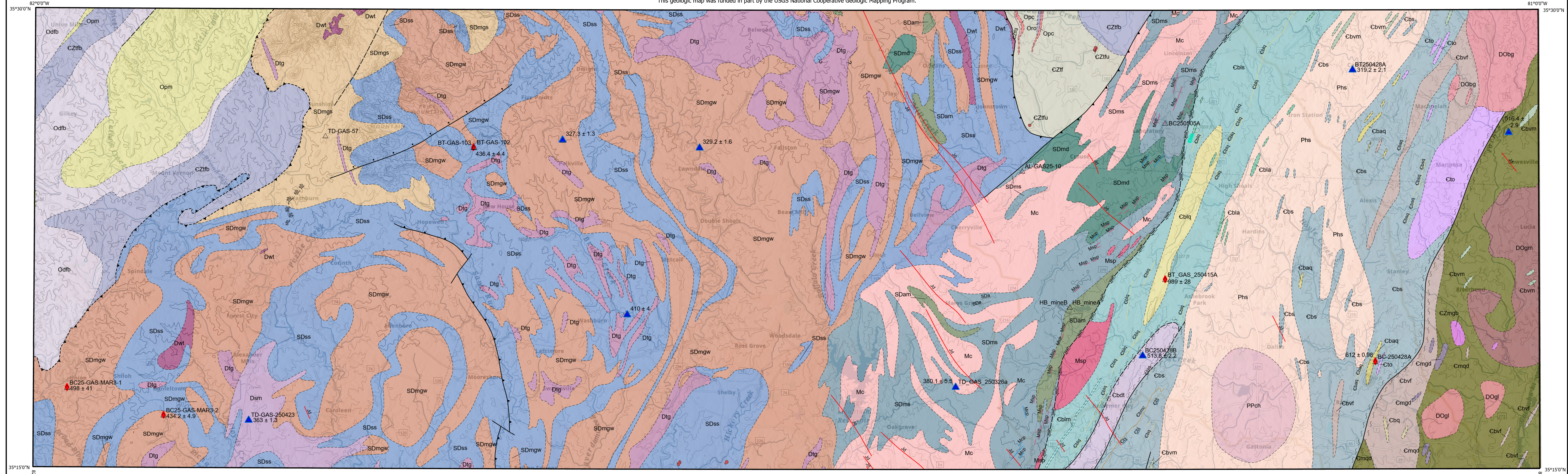
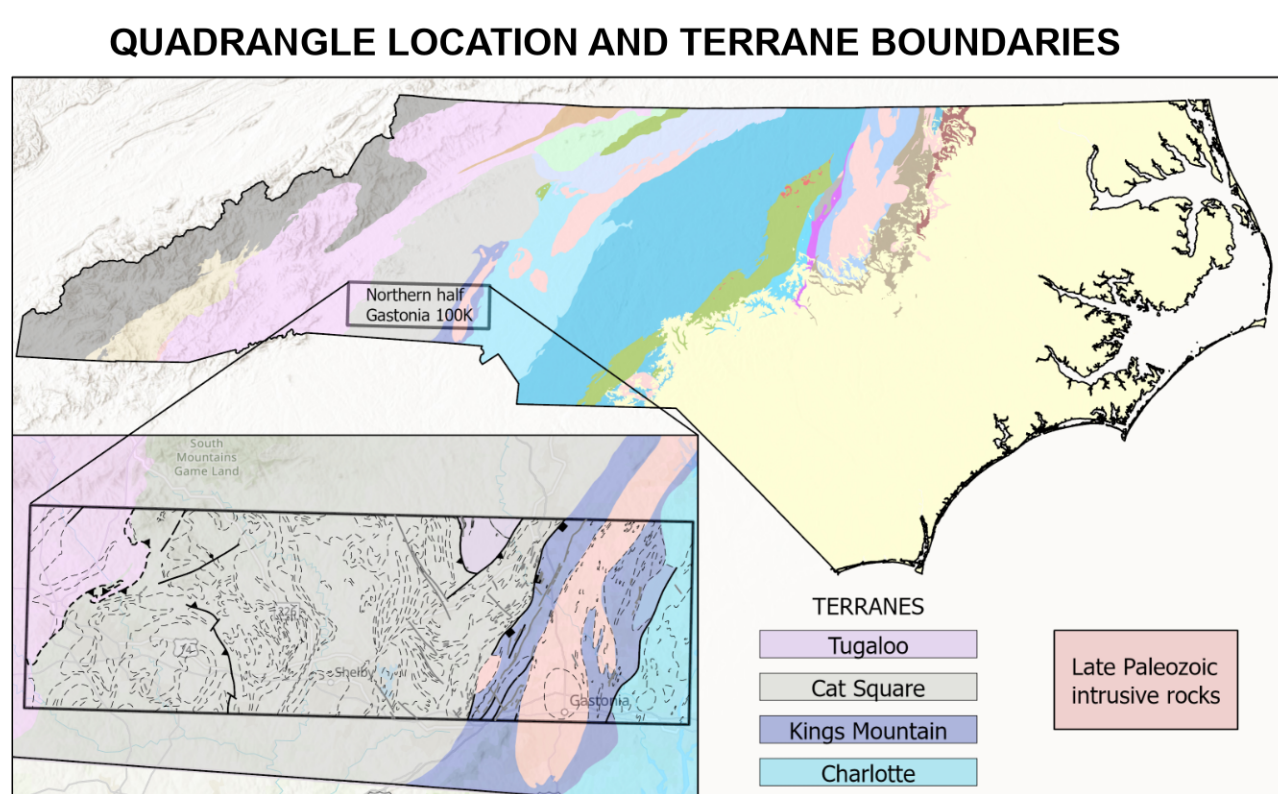
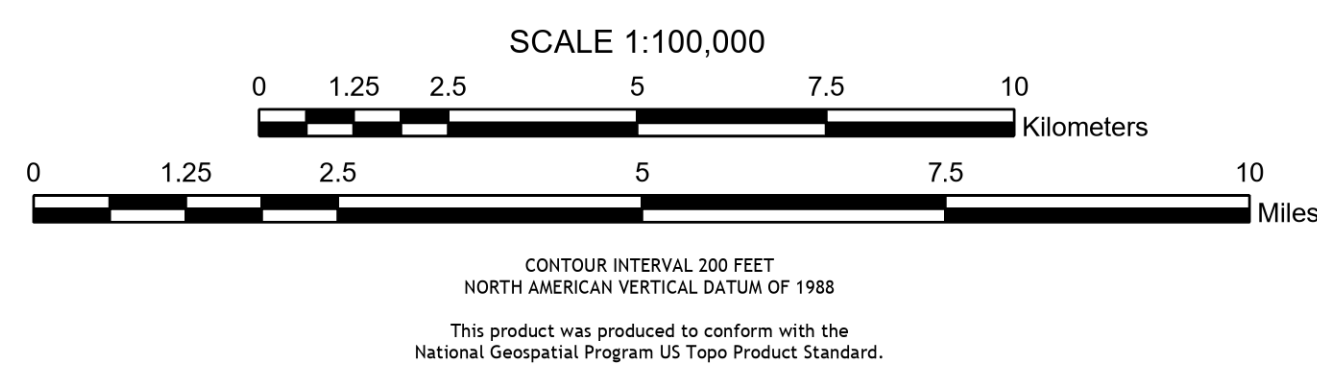


This geologic map was funded in part by the USGS National Cooperative Geologic Mapping Program.

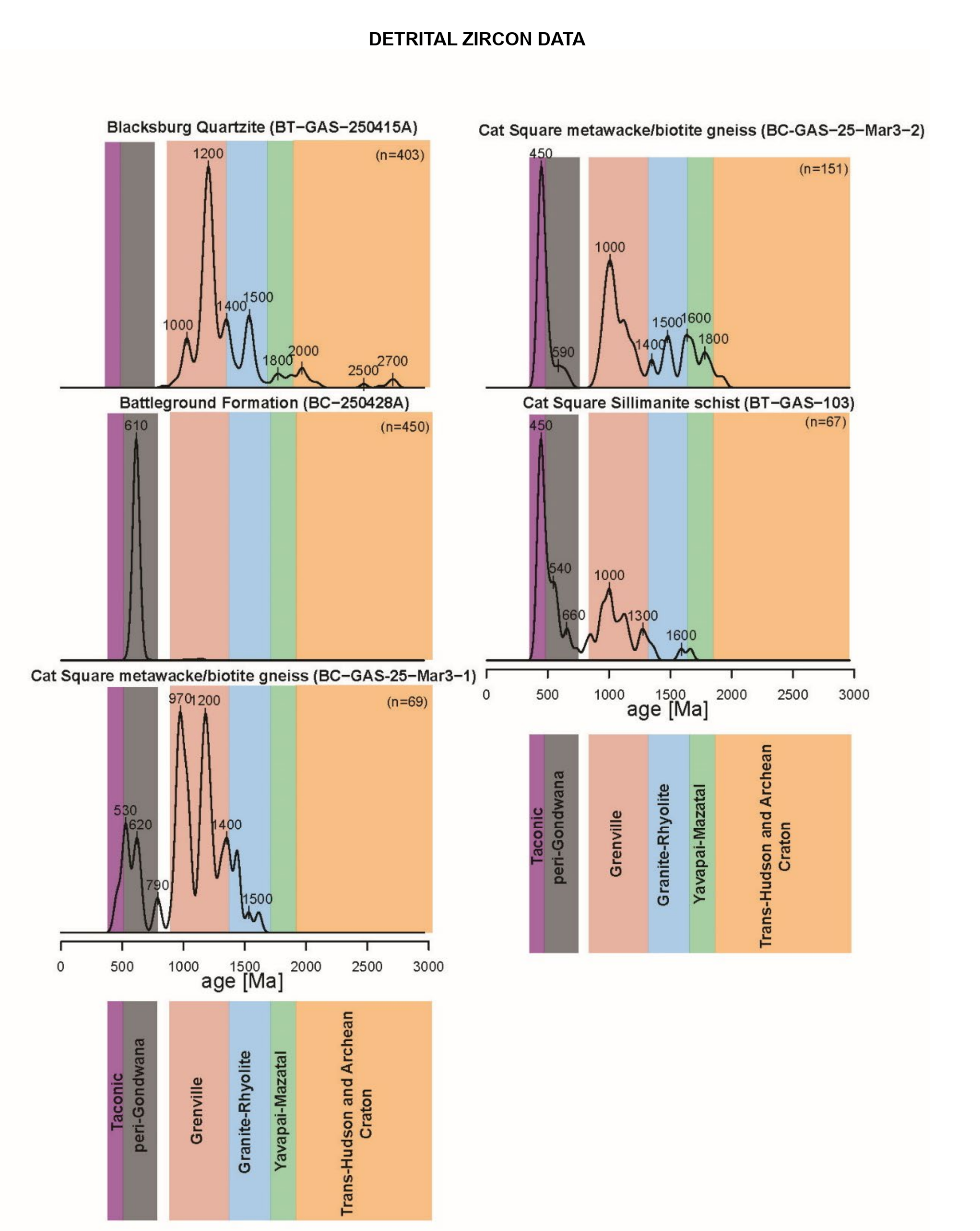
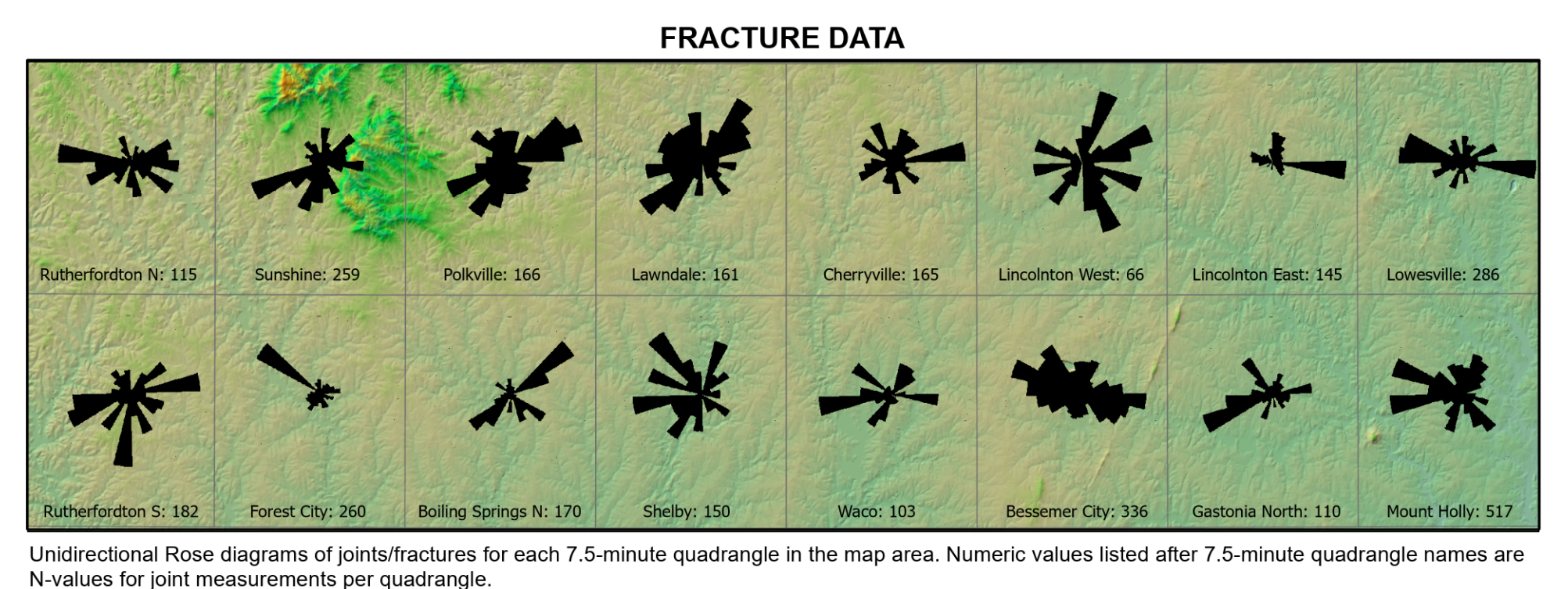
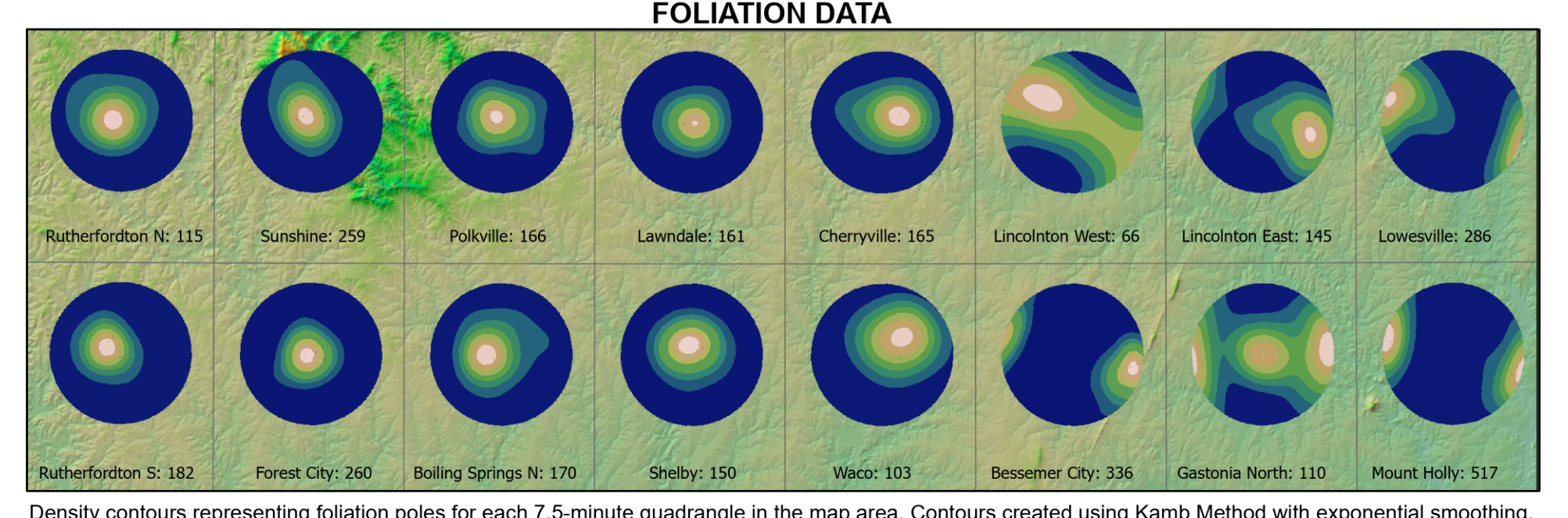
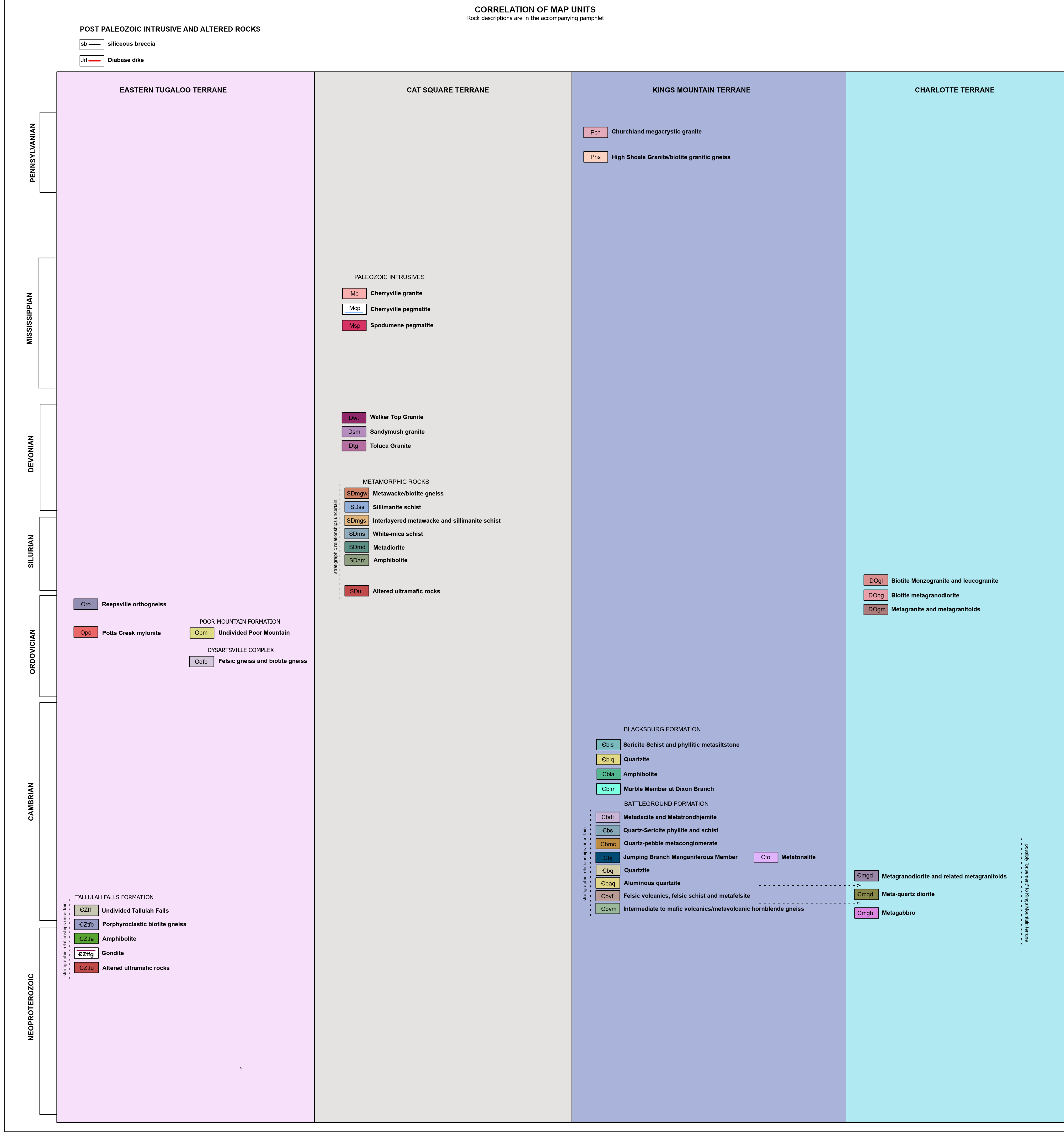
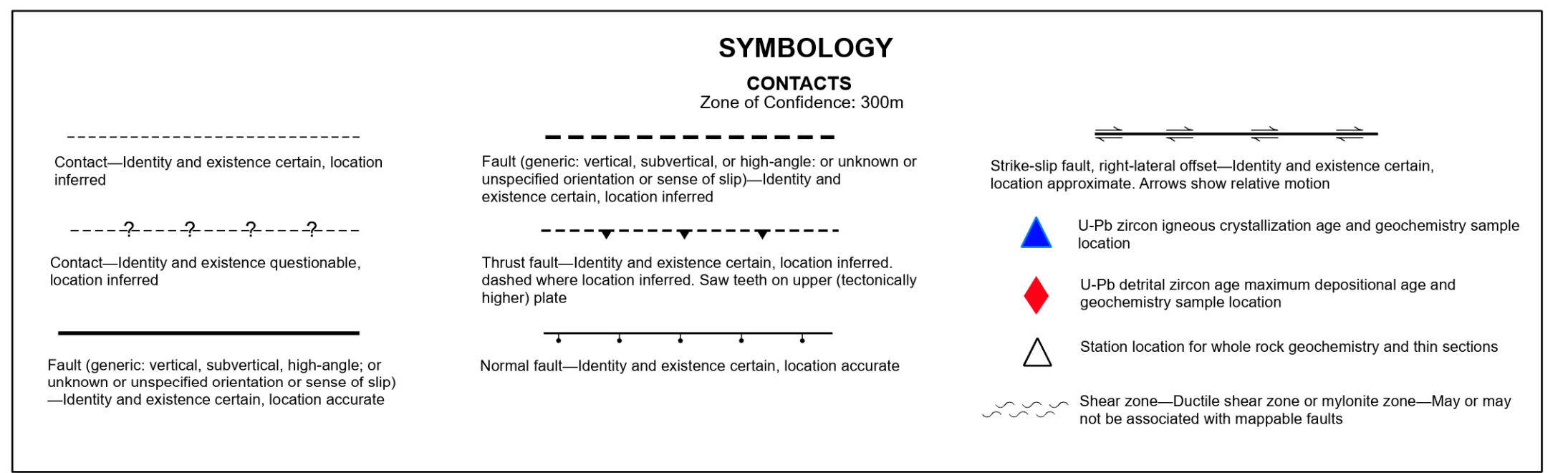


BEDROCK GEOLOGIC COMPILATION MAP OF THE NORTHERN HALF OF THE GASTONIA 1:100,000-SCALE QUADRANGLE, NORTH CAROLINA

NCGS Open File Report 2026-02
 Compiled by: Bart L. Cattanch, Brennan T. Trantham, Thomas J. Douglas, Ashley S. Lynn, Shawn C. Bast, Jesse S. Hill
 Digital representation by Brennan T. Trantham and Bart L. Cattanch
 Geochronology by Adam C. Curry and J. Daniel Quick



Coordinate System: NAD 83 StatePlane North Carolina FIPS 2000
 Projection: Lambert Conformal Conic
 Datum: North American 1983
 Contour Interval: 20 Feet
 North-South Vertical Datum: 1988
 This product was produced to conform with the National Geologic Mapping Act (Public Law 96-349).
 This map is not a legal document. Boundaries may be generalized for this map scale. Private lands within government reservation may not be shown. Obtain permission before entering private lands.



Kernel density estimate plots for detrital zircon data for selected sedimentary units on the northern half of the Gastonia 100K. North American crustal provinces represented by the colored bins. Figure 2 in the accompanying pamphlet.

Research supported by the U.S. Geological Survey, National Cooperative Geologic Mapping Program under STATEMAP (Award 2024, G24AC00339).
 This map and explanatory information is submitted for publication with the understanding that the United States Government is authorized to reproduce and distribute reprints for governmental purposes. The views and conclusions contained in this document are those of the authors and should not be interpreted as necessarily representing the official policies, either expressed or implied, of the U.S. Government.
 The goal of this compilation effort was to produce a new 1:100,000-scale digital geologic map of the study area using the USGS Geologic Mapping Schema (GMS). When available, geologic data at scales more detailed than 1:100,000 scale were used (i.e., 1:24,000 scale data). Data from the more detailed maps were presented at the scale originally mapped. As such some map unit polygons are very small on this 1:100,000-scale map and are unlabelled. The unit name of the unlabelled polygon can usually be interpreted from nearby labeled polygons. The orientation and structural data presented on this map does not include all measurements taken. Every measurement we have compiled can be found in the GEMS geodatabase for this geologic map. The GEMS digital database should be utilized in conjunction with this layout version of the map.

