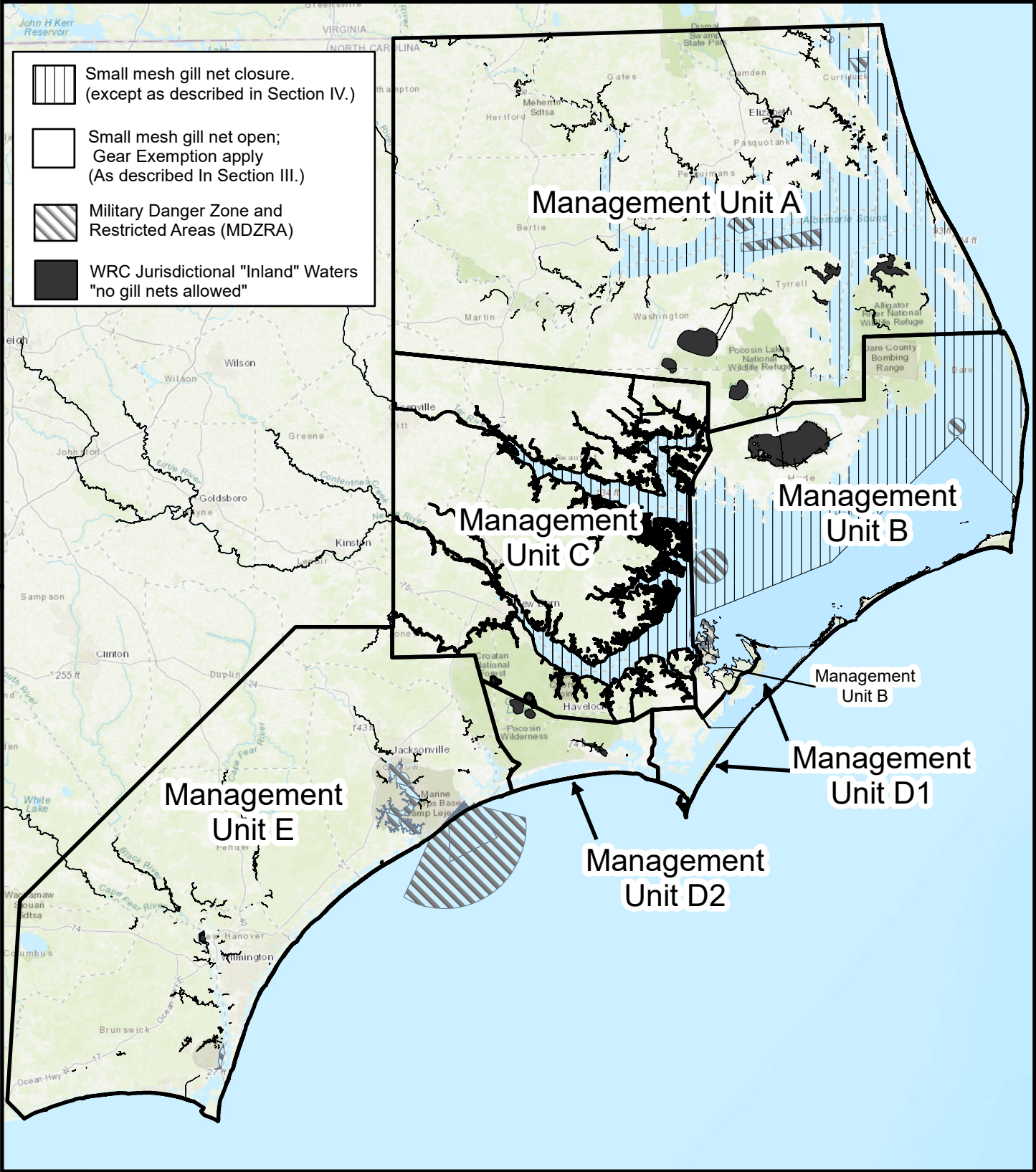
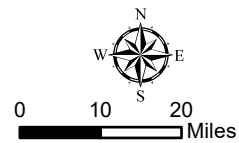


Maps are provided for illustrative purposes to assist the public.
 Maps do not supersede existing rules or proclamations.



PROCLAMATION
 M-13-2026

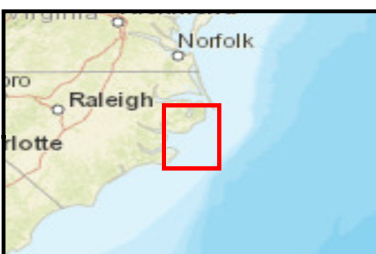
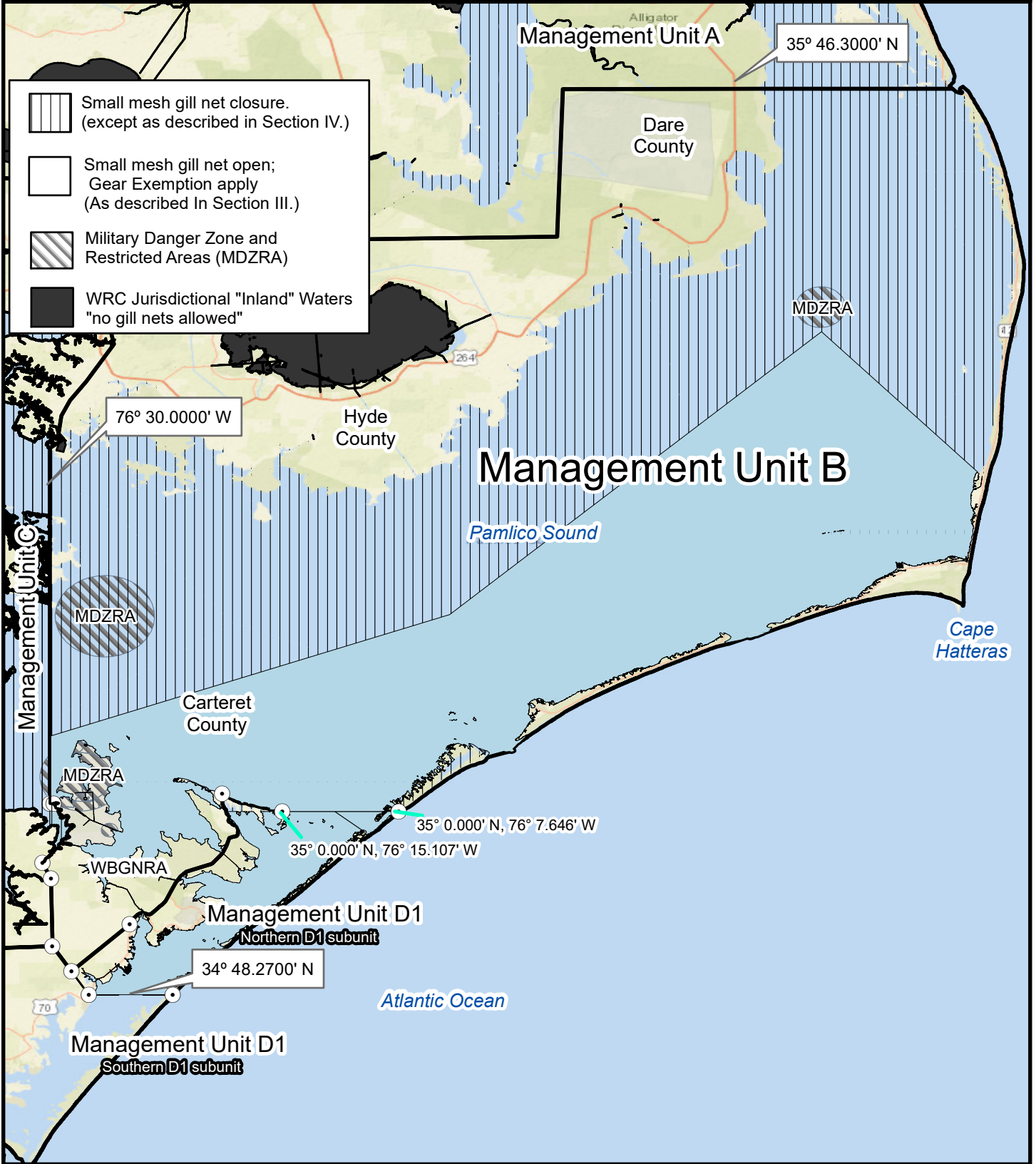
Map 1



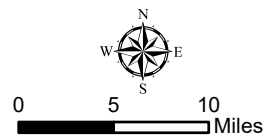
map date: May 2026



Maps are provided for illustrative purposes to assist the public.
 Maps do not supersede existing rules or proclamations.



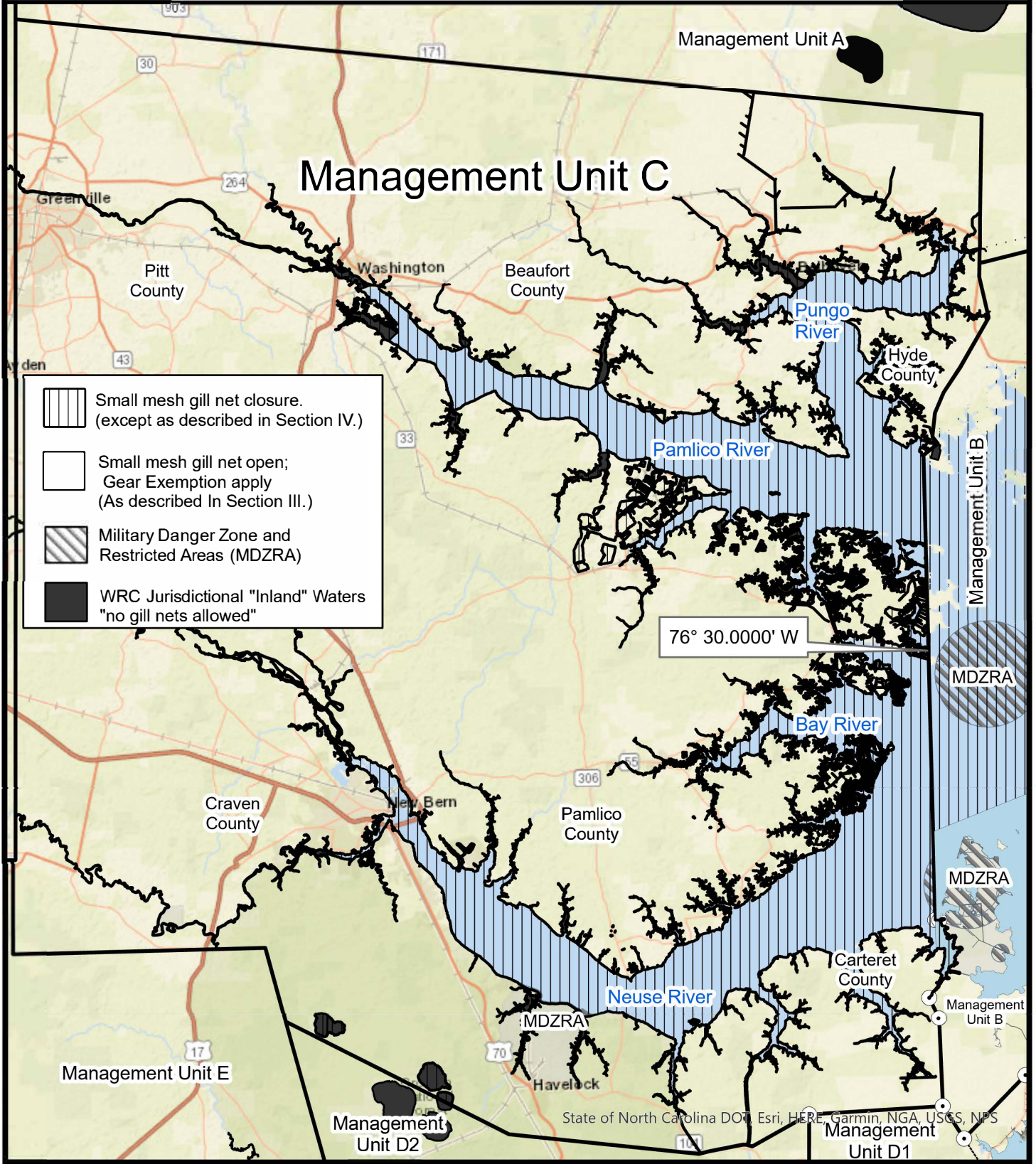
PROCLAMATION
 M-13-2026 Map 2



map date: May 2026

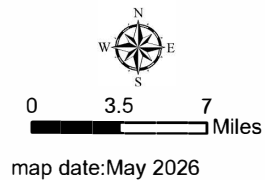


Maps are provided for illustrative purposes to assist the public.
Maps do not supersede existing rules or proclamations.

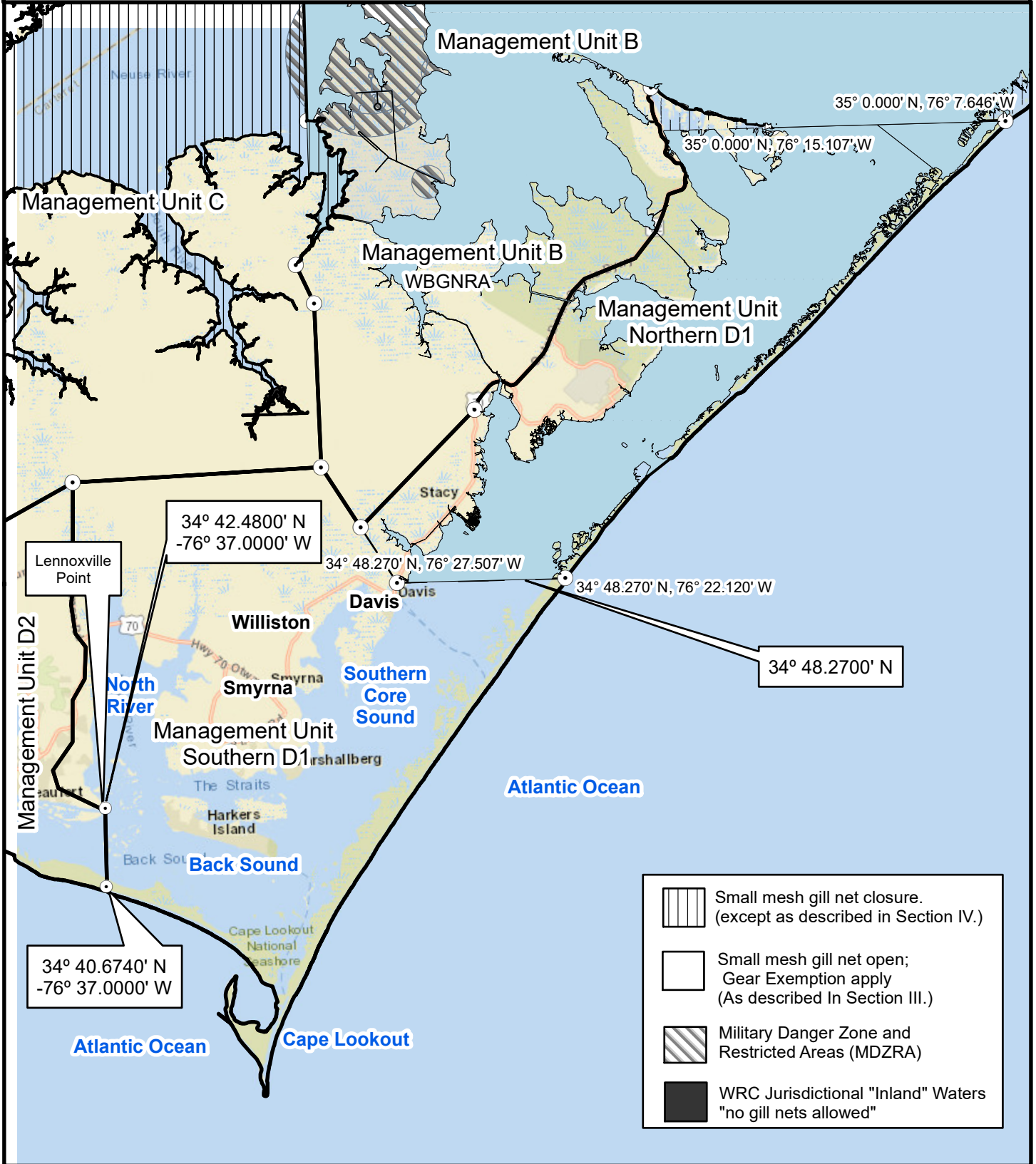


PROCLAMATION M-13-2026

Map 3



Maps are provided for illustrative purposes to assist the public.
 Maps do not supersede existing rules or proclamations.



	Small mesh gill net closure. (except as described in Section IV.)
	Small mesh gill net open; Gear Exemption apply (As described in Section III.)
	Military Danger Zone and Restricted Areas (MDZRA)
	WRC Jurisdictional "Inland" Waters "no gill nets allowed"



PROCLAMATION
 M-13-2026

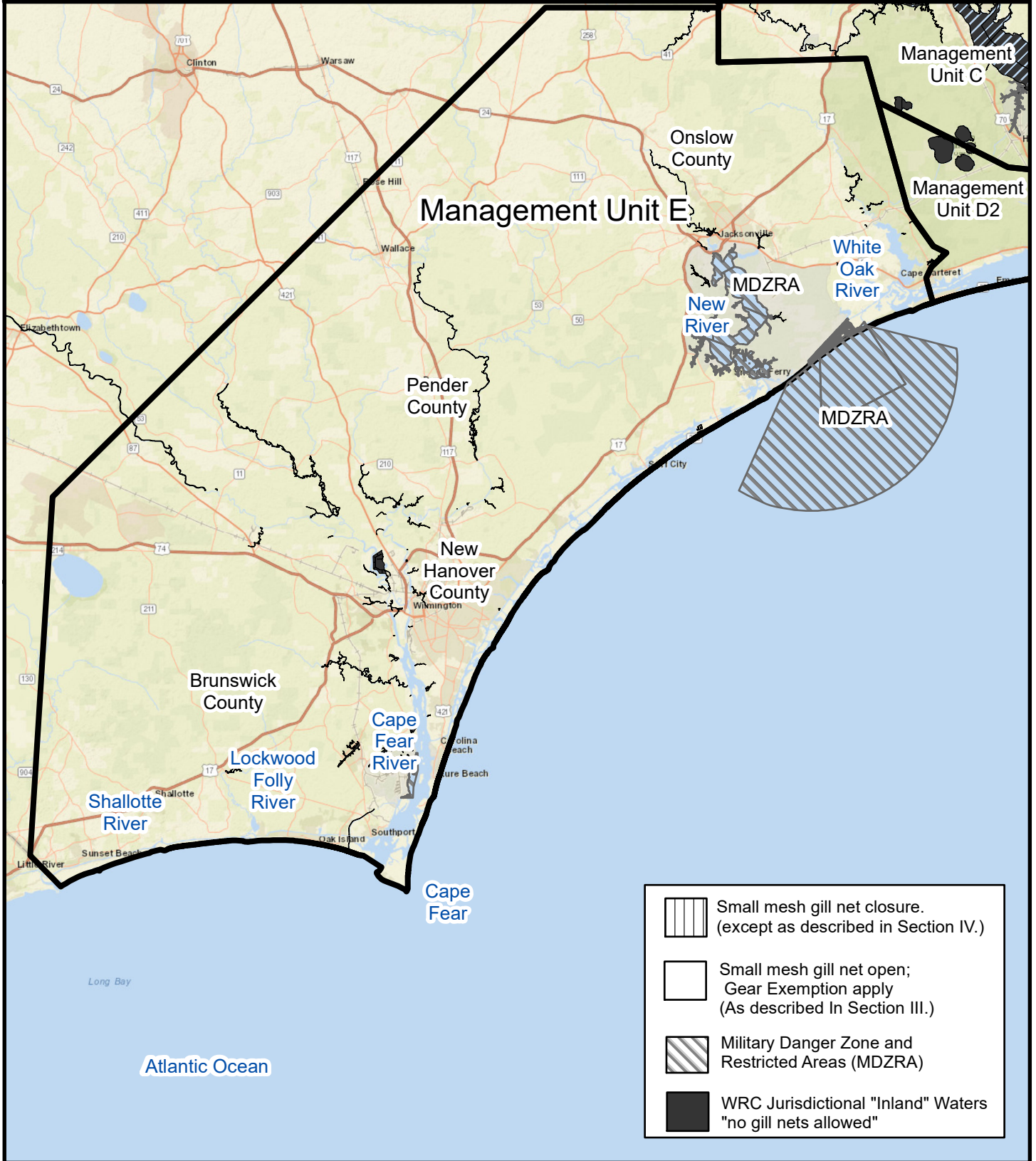
Map 4

0 2 4 Miles

map date: May 2026



Maps are provided for illustrative purposes to assist the public.
 Maps do not supersede existing rules or proclamations.



PROCLAMATION
 M-13-2026

Map 6

