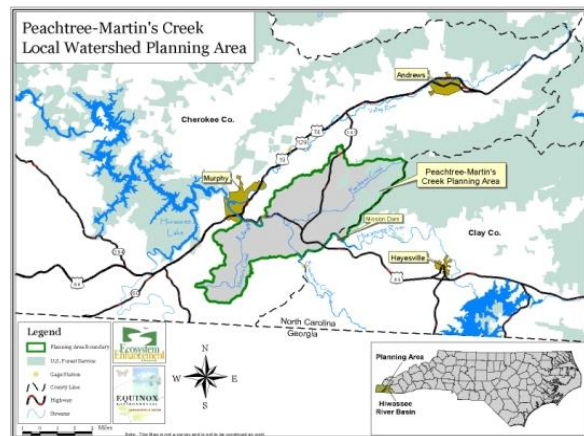
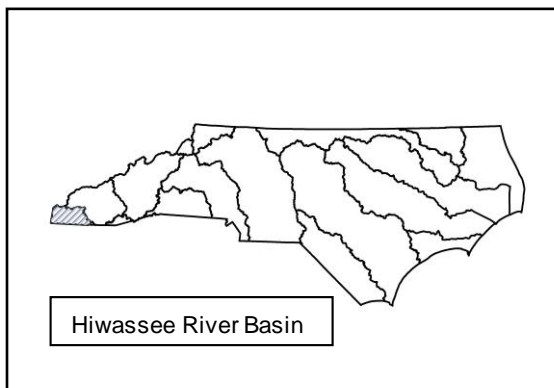


PEACHTREE-MARTINS CREEK LOCAL WATERSHED PLAN FACT SHEET

| | |
|--|--|
| <p>Location: River Basin: Cataloging Unit: 14-digit Hydrologic Units: Counties:</p> | <p>Near Murphy, NC Hiwassee 06020002 06020002090020, 06020002100040, 06020002100050, 06020002170010 Cherokee, Clay</p> |
| <p>Watershed Area</p> | <p>39 square miles</p> |
| <p>Participants:</p> | <p>Hiwassee River Watershed Coalition, Tennessee Valley Authority, Local Advisory Committee</p> |
| <p>Contractor Hired for Watershed Assessment</p> | <p>Equinox Environmental, Inc.</p> |



Project Overview

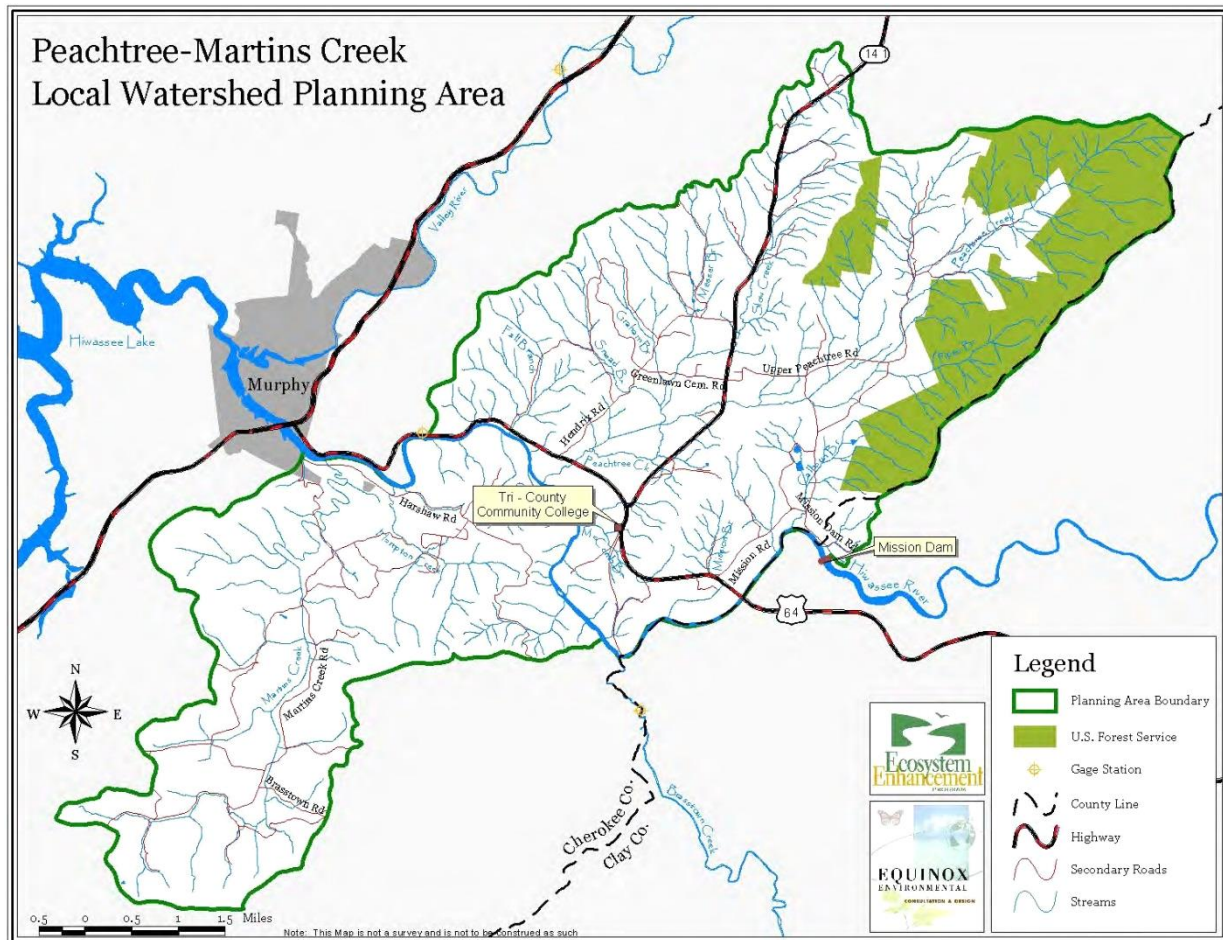
The Peachtree-Martin's Creek watershed is a 39 mi² area near Murphy, including Martins Creek, Peachtree Creek, Slow Creek, and Mission Branch. Land use is a mix of pasture, forest, and residential land. Development pressure on agricultural and forested land is increasing, as growth from the Atlanta metro area expands. This local watershed plan, completed in 2007, expanded on watershed restoration work performed by the Hiwassee River Watershed Coalition and natural resource agencies.

The watershed team consisted of staff of EEP (now the Division of Mitigation Services or DMS), Equinox Environmental, Division of Water Quality, and the Hiwassee River Watershed Coalition. They performed intensive field assessment and landowner outreach activities, carrying out recommendations named by a local advisory committee. The Tennessee Valley Authority developed new land use and riparian buffer datasets from low altitude aerial photography and produced an Integrated Pollutant Source Identification database in March 2006. Current stressors include lack of riparian vegetation, channel modification, excess nutrients and sediments, fecal bacterial contamination, stormwater pollutants and velocities, groundwater contamination, and sediment inputs from a local



quarry. Future stressors from new development were modeled given various development scenarios and land management policies.

Management strategies to address both present and future stressors were identified. Sixteen stream restoration projects and seven preservation projects were identified for EEP's consideration. The Hiwassee River Watershed Coalition is implementing various plan recommendations, including stormwater management and continued landowner education.



Plan Documents

[Preliminary Findings and Recommendations Report](#)

[Watershed Assessment Report](#)

[Watershed Management Plan](#)

[Project Atlas](#)

[Findings and Recommendations Summary](#)