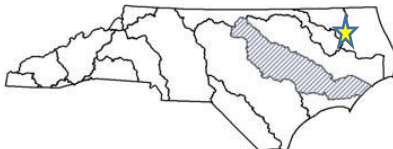
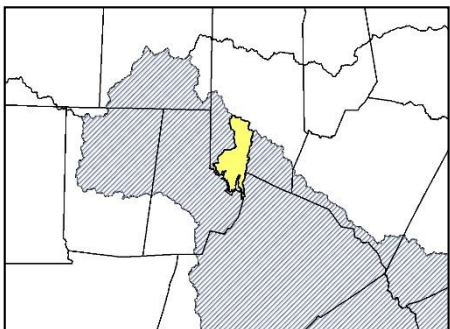


# LAKE ROGERS LOCAL WATERSHED PLAN

## Fact Sheet

|  |   |
|--|---|
| <b>Location Cities:</b><br><b>River Basin:</b><br><b>Cataloging Unit:</b><br><b>14-digit Hydrologic Units:</b><br><b>County:</b>   | Near Creedmoor and Butner, NC<br>Neuse<br>03020201<br>03020201060010<br>Granville |
| <b>Watershed Area:</b>   | 47 square miles   |
| <b>Participants:</b>   | City of Creedmoor, Granville County, Tar River Land Conservancy, UNRBA            |
| <b>Watershed Assessment Contractor</b>   | Phases I-III: Tetra Tech<br>Phase IV: PBS&J and UNRBA                             |
| <div style="display: flex; justify-content: space-around;"> <div style="text-align: center;"> <p>Neuse River Basin</p>  </div> <div style="text-align: center;">  </div> </div> |   |

### Project Overview

Lake Rogers was selected for the focus area for the watershed assessment and restoration planning because it was the most at risk water supply reservoir in the Upper Neuse River Basin (UNRBA). In 1998, the North Carolina Wetlands Restoration Program (NCWRP), now the Division of Mitigation Services (DMS) in cooperation with the UNRBA received an Environmental Protection Agency Wetlands Program Development Grant. One of the grant deliverables was development of the Upper Neuse River Basin Watershed Management Plan. The intent of this plan was to analyze current and future water quality conditions and strategies to address water quality concerns. During the development of this plan, municipal and county government representatives identified water quality within water supply reservoirs as their highest priority along with limits to recreational use and habitat protection as other priorities. Based on these ranked priorities, the UNRBA and the NCWRP determined that the Lake Rogers watershed, located within the Upper Neuse River Basin, was an appropriate candidate for a Local Watershed Plan. The Lake Rogers LWP goals focused on poor water quality and sediment loading within the water supply reservoir.



Environmental  
Quality

### **LWP Project Activity**

This LWP was initiated in March and completed in December 2003. An Implementation effort began in May 2008 with PBS&J identifying restoration and buffer opportunities to develop a Project Atlas. UNRBA worked with Granville County and the Town of Creedmoor to develop implementation strategies. The project area now includes Ledge Creek, which drains Lake Rogers and flows into Falls Lake.

### **Documents & Plan Materials**

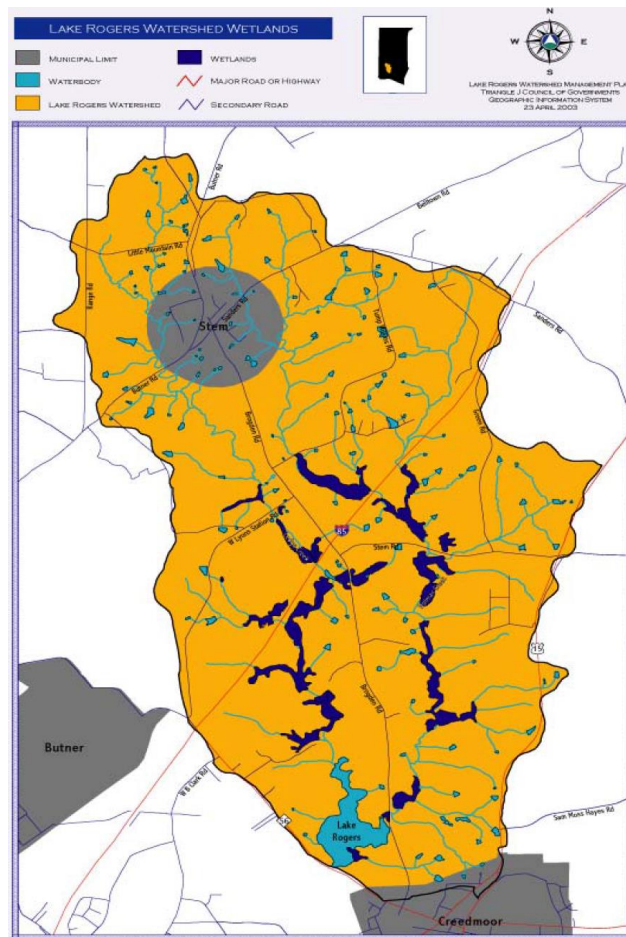
#### [Lake Rogers Local Watershed Plan](#)

Lake Rogers / Ledge Creek Project Atlas-*Due to large file size, contact DMS for project report*

#### [Upper Neuse Phase IV Report](#)

#### [Summary of Findings and Recommendations](#)

### **Watershed Planning Area**



**Figure 1. Lake Rogers Planning Area**

