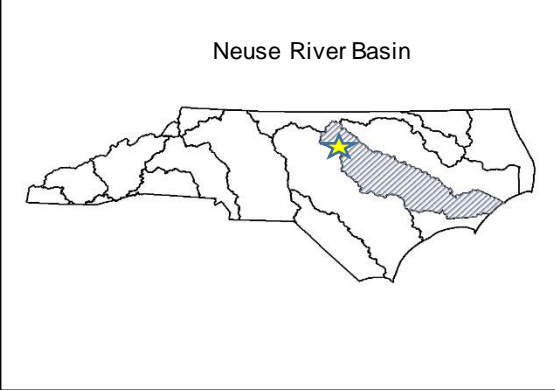
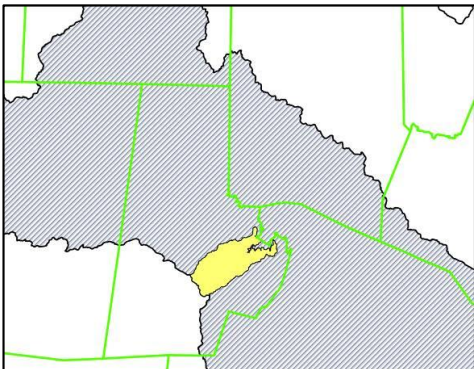


# LITTLE LICK CREEK LOCAL WATERSHED PLAN

## Fact Sheet

<b>Location City:</b> <b>River Basin:</b> <b>Cataloging Unit:</b> <b>14-digit Hydrologic Units:</b> <b>County:</b>	Durham Neuse 03020201 03020201050020 Durham County
<b>Watershed Area:</b>	21 square miles
<b>Participants:</b>	Upper Neuse River Basin Association; Center for Watershed Protection; Federal, State and Local Government Agencies; representatives of residential, commercial, and natural resource management interests in the local watershed
<b>Watershed Assessment Contractor</b>	Upper Neuse River Basin Association and Post, Buckley, Schuh, & Jernigan, Inc. (PBS&J)
<div style="display: flex; justify-content: space-around;"> <div style="text-align: center;">  <p>Neuse River Basin</p> </div> <div style="text-align: center;">  </div> </div>	

### **Project Overview**

The NC Division of Mitigation Services (DMS), formerly Ecosystem Enhancement Program, initiated the Little Lick Creek watershed planning process in December 2004. Little Lick Creek is on the NC Section 303(d) list of impaired water bodies, due primarily to the Creek's poor aquatic life ratings and to low levels of dissolved oxygen. The Creek is also a tributary of Falls Lake, for which the State of NC developed a nutrient management strategy. The Little Lick Creek Local Watershed Plan recommends nine comprehensive watershed management strategies for restoring water quality and aquatic habitat in the short-term and protecting them in the long-term.

Goals identified for the Little Lick Creek Watershed included restoring aquatic and riparian habitat in the watershed, improving and protecting water quality and aquatic habitat in the watershed, protecting water quality and habitat in Falls Lake, protecting lands critical for habitat and water quality, improving natural conditions for people living in the watershed, and fostering community stewardship of the watershed.



The two year-long Little Lick Creek planning effort identified a host of opportunities to restore water quality and aquatic habitat in the 21 square-mile watershed, including 24 stream repair locations, 24 buffer restoration sites, 71 stormwater retrofit projects, and hundreds of problem on-site wastewater systems. In addition, the plan identified strategies to prevent future degradation including critical lands protection, better site design and improved enforcement of existing rules. Identified stewardship opportunities included watershed outreach and education, adopt-a-stream programs and stream and watershed monitoring.

### **LWP Project Activity**

The Little Lick Creek Local Watershed Plan was completed in December 2006. PBS&J developed a Project Atlas for sites identified in the 2006 plan and additional sites identified by UNRBA working with local resource professionals. The Project Atlas was completed in September 2009.

### **Documents & Plan Materials**

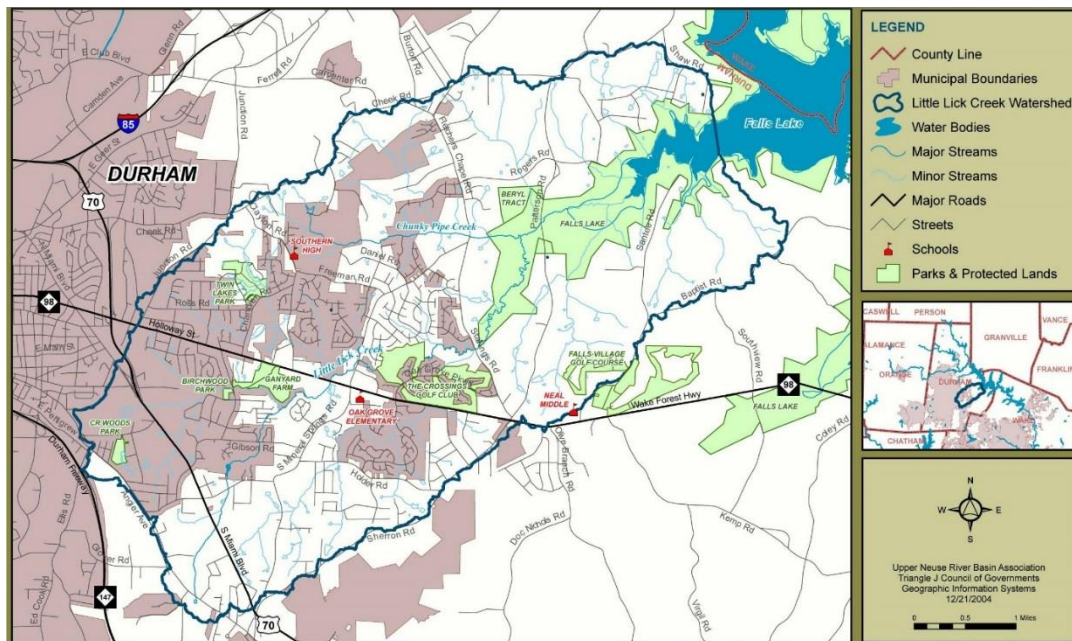
[Little Lick Creek Local Watershed Plan - Final Plan \(December 2006\)](#)

[Little Lick Creek Project Atlas](#)

[Upper Neuse Phase IV Report](#)

[Little Lick Creek Summary of Findings and Recommendations](#)

### **Watershed Planning Area**



**Figure 1. Little Lick Creek Planning Area**