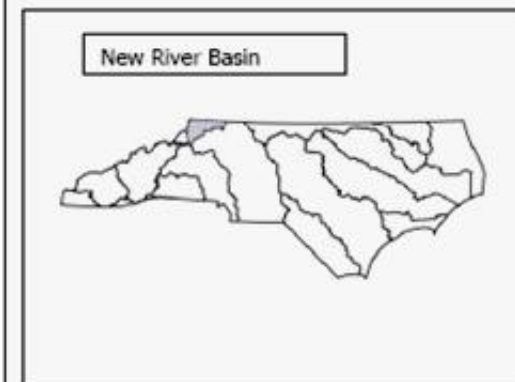
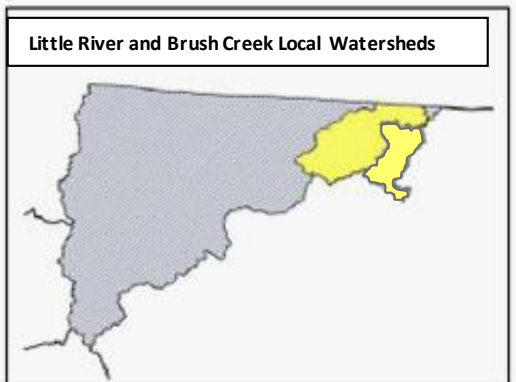


Little River and Brush Creek Local Watershed Plan FACT SHEET

<p style="text-align: center;"><u>Location</u></p> <p>River Basin: New</p> <p>Cataloging Unit: 05050001</p> <p>14-digit Hydrologic Units: 05050001030020 (Little River), 05050001030030 (Brush Creek)</p> <p>Counties: Alleghany</p>	
<p style="text-align: center;"><u>Watershed Area</u></p>	~ 111 square miles
<p style="text-align: center;"><u>Participants:</u></p>	Alleghany County Soil & Water Conservation District, Town of Sparta, County Planning Dep't., NC Wildlife Resources Commission, NC DOT, Blue Ridge Rural Land Trust, NCSU Cooperative Extension Service, High Country COG (Region D), Nat'l Committee for the New River, NC DWQ, Blue Ridge RC&D
<p style="text-align: center;"><u>Contractor Hired for Watershed Assessment</u></p>	WK Dickson, Inc.
<div style="display: flex; justify-content: space-around;"> <div style="border: 1px solid black; padding: 5px; width: 45%;"> <p style="text-align: center; border: 1px solid black; display: inline-block;">New River Basin</p>  </div> <div style="border: 1px solid black; padding: 5px; width: 45%;"> <p style="text-align: center; border: 1px solid black; display: inline-block;">Little River and Brush Creek Local Watersheds</p>  </div> </div>	

Project Overview

Despite historically good water quality conditions – including several streams designated as High Quality (HQW) or Trout (Tr) waters – there are past and ongoing land use activities that threaten the quality of aquatic resources within these two local watersheds. The conversion of agricultural lands to residential/commercial uses has the potential of increasing key watershed stressors (e.g., impervious cover).

Numerous opportunities for stream, wetlands and buffer restoration projects were noted in the Phase I watershed characterization report [WK Dickson, March 2004], which identified several major watershed stressors, including: unforested buffers that are heavily grazed; livestock access to streams; heavily eroded stream banks; land-disturbing activities on steep slopes; and storm water runoff in and around the town of Sparta.

Project Schedule

The preliminary watershed characterization (Phase I) was completed in March of 2004. Phases II (Detailed Assessment & Modeling) and III (Development of Watershed

Management Plan and Project Atlas) were conducted from December 2005 through June of 2007. As part of these efforts, WK Dickson conducted an in-depth evaluation of conditions in the upper and lower Bledsoe Creek sub-watersheds in the vicinity of the Town of Sparta, including the identification of possible storm water best management practices (BMPs) project sites. [The water quality and ecology of Bledsoe Creek is considered to be at risk, based on the results of monitoring efforts undertaken by NC DWQ staff during Phase II of this work.] Potential watershed improvement projects were also identified within priority subwatersheds across the entire LWP area (Little River and Brush Creek 14-digit HUs). A Technical Advisory Committee (TAC) was convened in the spring of 2006 to assist in the prioritization of watershed restoration/enhancement projects and to help implement the management recommendations highlighted within the final Plan.

EEP (now the Division of Mitigation Services, DMS) has initiated the design and construction of several stream and wetland restoration projects within the Little River and Brush Creek watersheds.

Project Documents

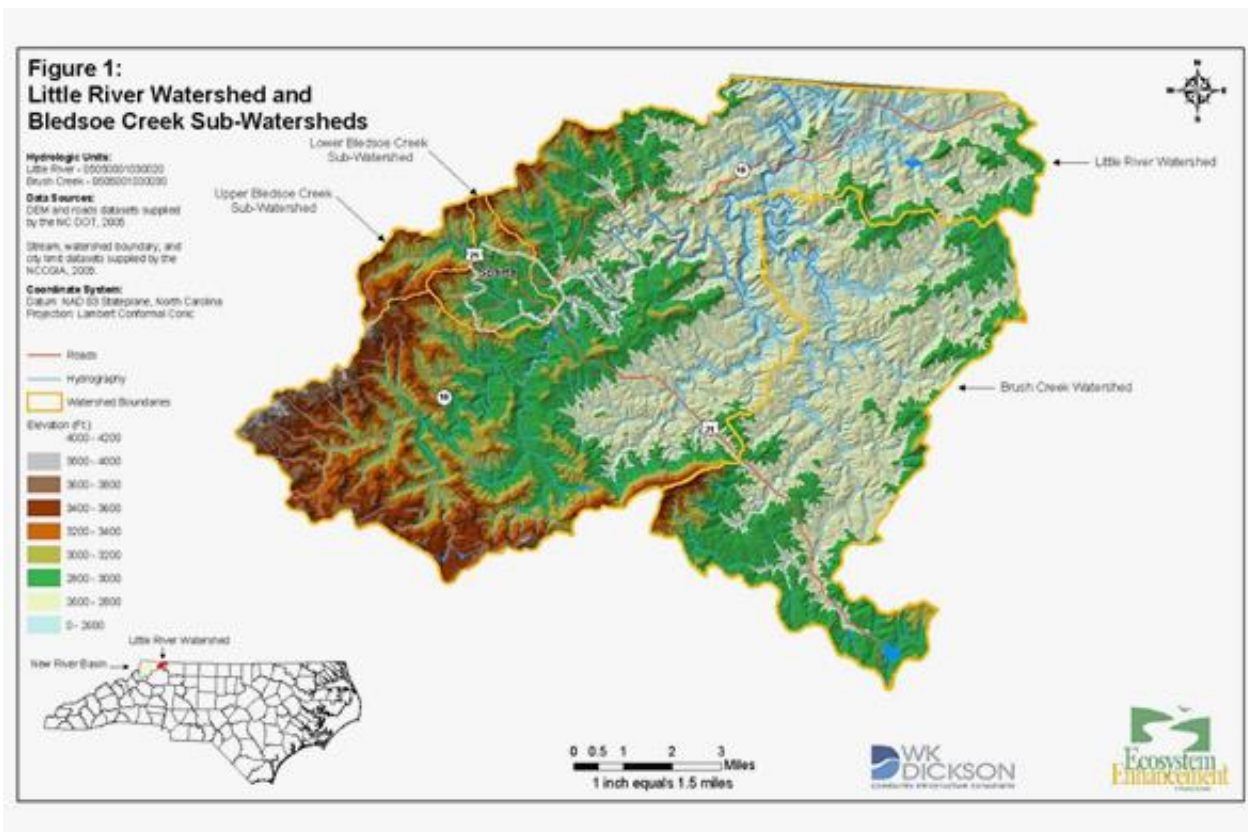
[Phase I – Preliminary Findings & Recommendations Report \[Spring 2004\]](#)

[Tech. Memo 1: Identification of Project Opportunities throughout Study Area \[March 2007\]](#)

[Tech. Memo 2: Detailed Assessment of Bledsoe Creek Subwatersheds \[March 2007\]](#)

[Final Bledsoe Creek Watershed Management Plan \[June 2007\]](#)

[Summary of Findings & Recommendations](#)



 Nothing ComparesSM