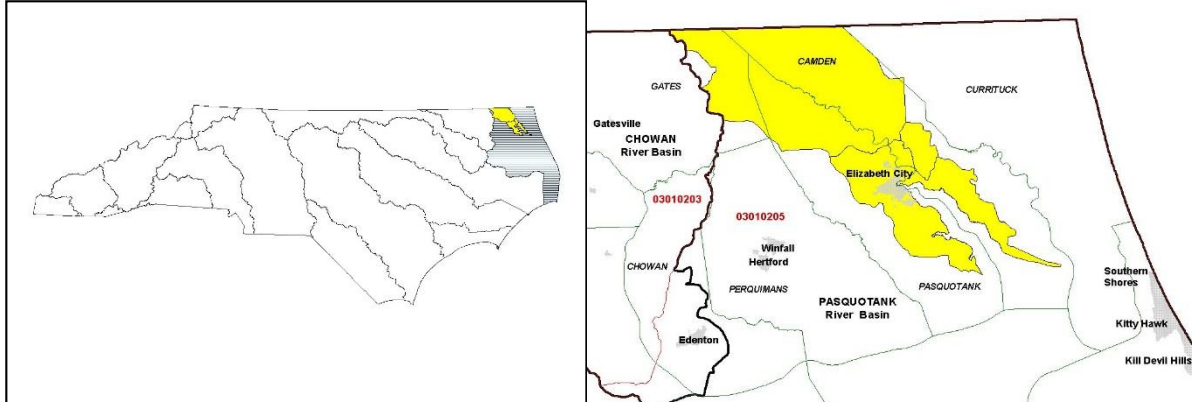


## Pasquotank River Local Watershed Plan Fact Sheet

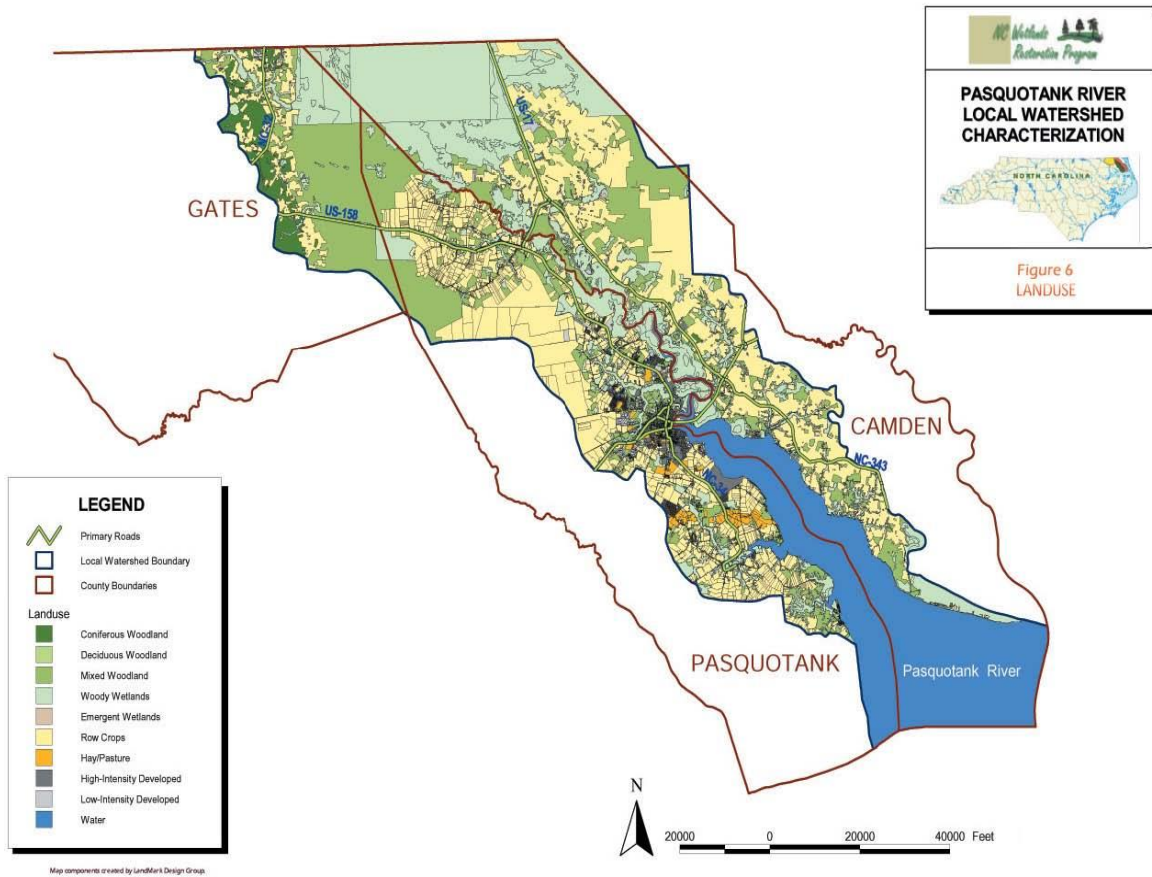
<p><b>Location</b></p> <p><b>River Basin:</b></p> <p><b>Cataloging Unit:</b></p> <p><b>14-digit Hydrologic Units:</b></p> <p><b>Counties:</b></p>	<p>Pasquotank</p> <p>03010205</p> <p>03010205050010, 03010205010020, 03010205040010</p> <p>Camden, Pasquotank, Gates</p>
<b>Watershed Area:</b>	369.9 square miles
<b>Participants:</b>	Local governments, resource professionals, timber industry as well as others
<b>Watershed Assessment Contractor:</b>	Decision Support Professionals, Inc.
	

### Project Overview

The Pasquotank River drainage was selected for Local Watershed Planning due to water quality and growth and development concerns including sedimentation, urban and agricultural nonpoint source pollution, observed stream instability and proximity to future Department of Transportation impacts. The watershed area has also been impacted by stormwater runoff, flooding, sedimentation and habitat degradation issues. Pasquotank and Camden Counties are experiencing rapidly increasing development pressure, which may lead to future watershed degradation if no actions are taken. A stakeholder team was established in December 2001, meeting bimonthly. The team actively participated in the assessment process and in the review of assessment results.

### Project Schedule

The Pasquotank River Local Watershed Plan was completed in December 2003.



## **Documents**

[Watershed Characterization Report](#)

[Watershed Functional Assessment Report](#)

[Watershed Plan](#)

[Pasquotank River Local Watershed Restoration Opportunities Report](#)

[Summary of Findings and Recommendations](#)

