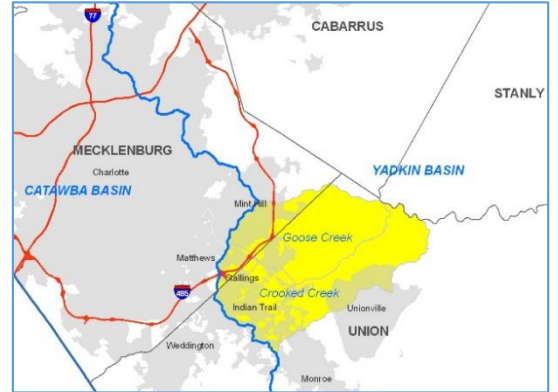
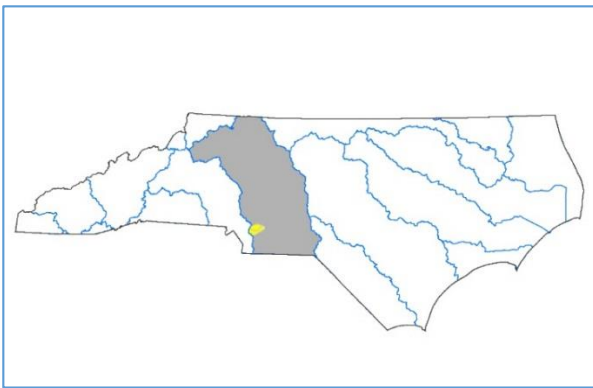


GOOSE AND CROOKED CREEKS LOCAL WATERSHED PLAN

Fact Sheet

<p>Location Cities:</p> <p>River Basin:</p> <p>Cataloging Unit:</p> <p>14-digit Hydrologic Units:</p> <p>County:</p>	<p>Fairview, Hemby Bridge, Indian Trail, Mint Hill, Monroe, Unionville, Stallings, Matthews and unincorporated Mecklenburg and Union Counties</p> <p>Yadkin</p> <p>03040105</p> <p>03040105030020, 03040105040010</p> <p>Union, Mecklenburg</p>
<p>Watershed Area:</p>	<p>95 square miles</p>
<p>Participants:</p>	<p>County Staff, NRCS, SWCD, State and Federal Resource Agencies.</p>
<p>Watershed Assessment Contractor</p>	<p>Centralina Council of Governments (www.centralina.org) Tetra Tech, Inc., Raleigh, NC (www.tetrattech.com)</p>



Project Overview

The Goose and Crooked Creek watersheds are located in Mecklenburg and Union Counties between Charlotte and Monroe. Goose Creek is home to an existing population of a federally listed endangered fresh water mussel, known as the Carolina heelsplitter (*Lasmigona decorata*), and is also listed on the State's list of impaired waters for high fecal coliform levels. Likely sources for the bacteria are small municipal wastewater treatment plants and agricultural runoff. Crooked Creek is also an impaired water due to poor biological health. Construction, stormwater runoff, and agricultural uses are the likely stressors to aquatic health in Crooked Creek. Development further threatens the aquatic health of both watersheds.

Goose Creek has been the focus of watershed protection in recent years by both North Carolina's Wildlife Resources Commission and the U.S. Fish and Wildlife Service because of the endangered Carolina heelsplitter. In Crooked Creek, activities by municipalities to control flooding and manage stormwater have demonstrated the need





Environmental Quality

for watershed planning. The Local Watershed Plan builds on prior planning efforts in these watersheds and develops a strategy for improving water quality and biological conditions.

Please visit the Plan website for further information on background, meetings, reports, and more: www.Gooseandcrooked.org

Project Schedule

Phase I of the project began July 2008 and was completed in March 2009. Phase II/III work began July 2010 and was finalized in early 2013.

Final Deliverables:

[Phase I Summary with Preliminary Findings and Phase II/III Recommendations](#)

[Phase II Watershed Assessment Report](#)

[Phase III Watershed Management Plan](#)

[Project Atlas \(Stream, Wetland, Buffer, BMP\)](#)

[Project Atlas \(Stream Preservation Only\)](#)

[Summary of Findings and Recommendations](#)

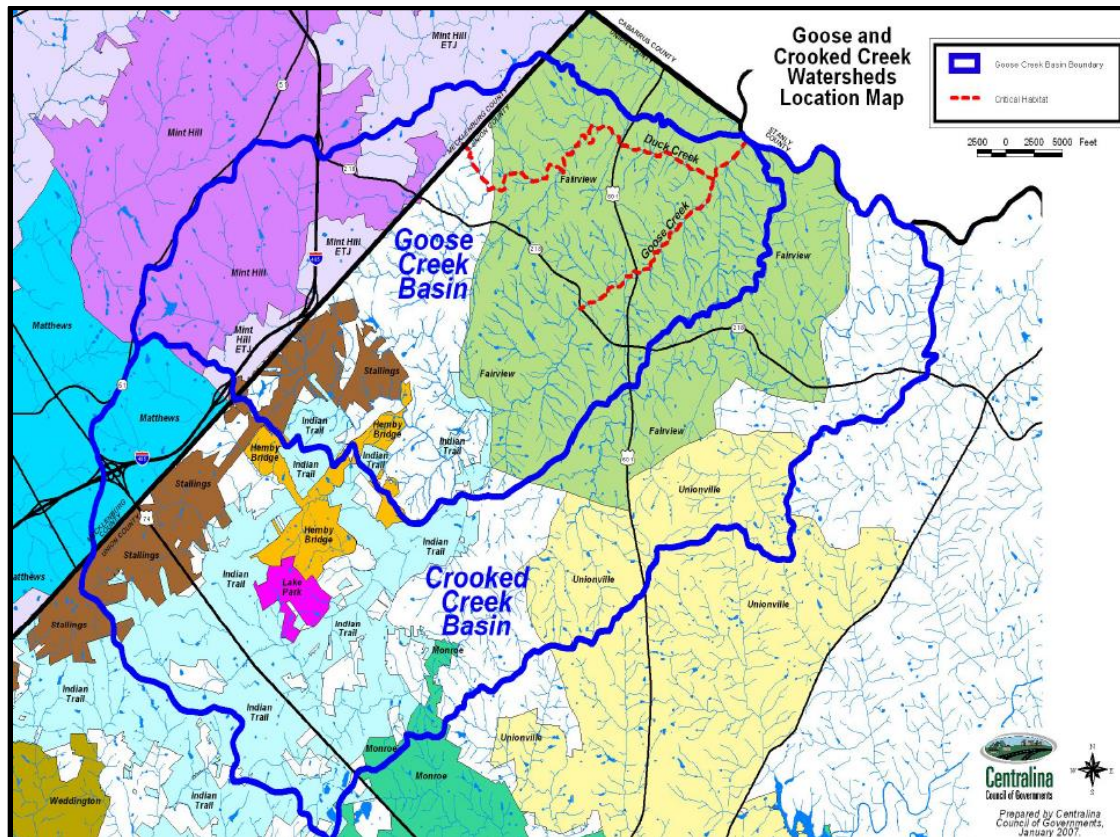


Figure 1. Goose and Crooked Creeks LWP Location Map

