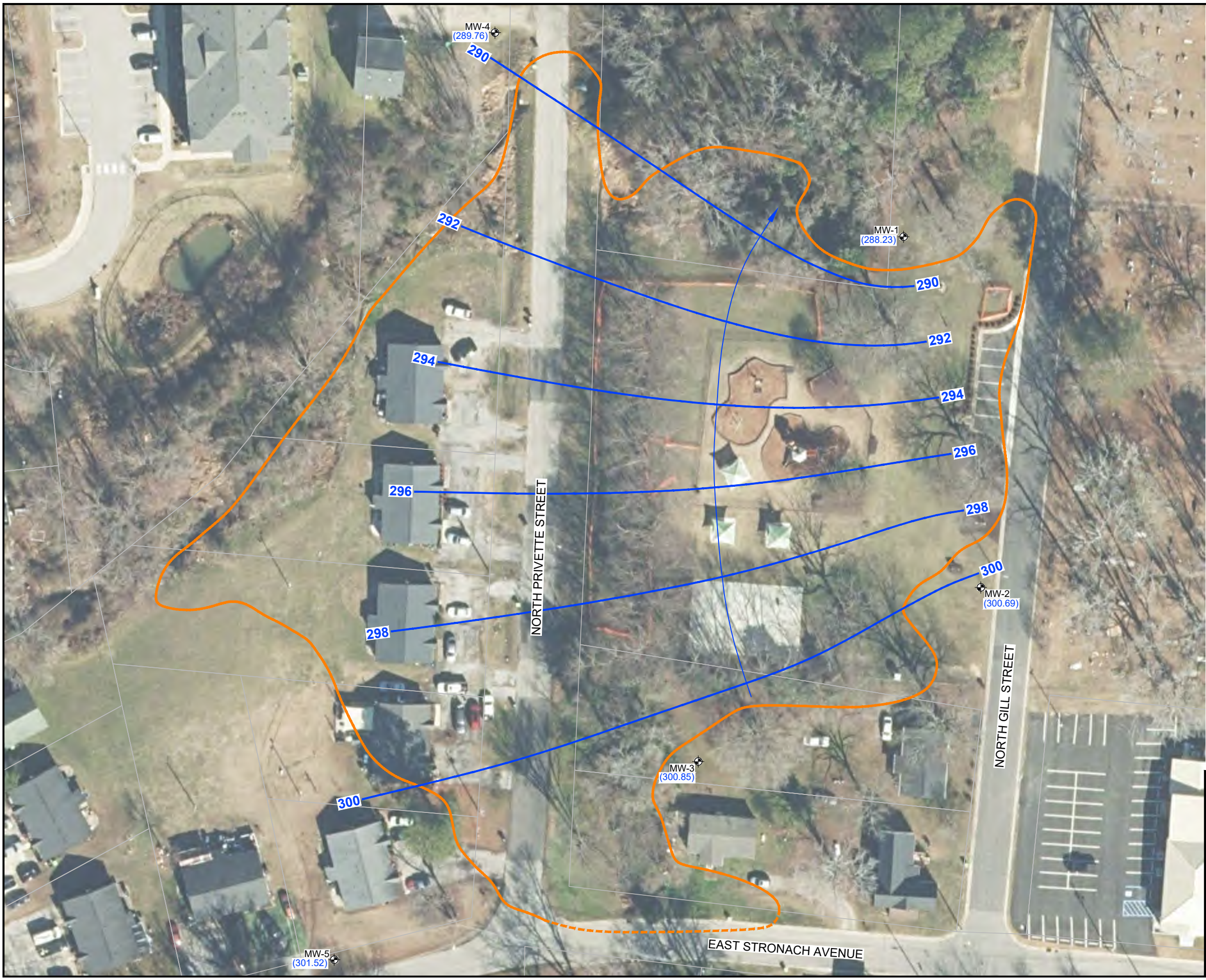


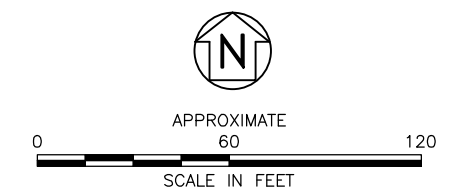
S:\AA-Master Projects\PR\PR_007 Gill Street Park\Reprints\RI-3-4 Delineation Borings\Figures\PR_007_20251210.dwg, FIG. 6, 3/4/2026 12:32:13 PM, drabrum



LEGEND

- WASTE DISPOSAL AREA (DASHED WHERE INFERRED)
- PARCEL LINE
- PERMANENT MONITORING WELL
- (300.85) GROUNDWATER ELEVATION (FT MSL)
- 300 GROUNDWATER ELEVATION CONTOUR (FT MSL) (DASHED WHERE INFERRED)
- INFERRED GROUNDWATER FLOW DIRECTION

- NOTES:**
1. AERIAL IMAGERY OBTAINED FROM NC ONEMAP, 2025.
 2. BASE DATA OBTAINED FROM WAKE COUNTY GIS, 2025.
 3. MONITORING WELLS PROFESSIONALLY SURVEYED BY APOGEE SURVEYING, PLLC ON 12/15/25.
 4. GROUNDWATER ELEVATIONS MEASURED BY H&H ON 11/20/25.
 5. WASTE DISPOSAL BOUNDARIES DETERMINED BY H&H DURING ASSESSMENT ACTIVITIES CONDUCTED FROM JUNE 2025 THROUGH NOVEMBER 2025.
 6. FT MSL = FEET ABOVE MEAN SEA LEVEL



**GROUNDWATER POTENTIOMETRIC MAP
(NOVEMBER 2025)**

GILL STREET PARK - NONCD0000201
NORTH GILL STREET
ZEBULON, NORTH CAROLINA

hart hickman
SMARTER ENVIRONMENTAL SOLUTIONS

JOB NO. PRL-007	DATE: 3-4-26	FIGURE NO. 6
-----------------	--------------	--------------