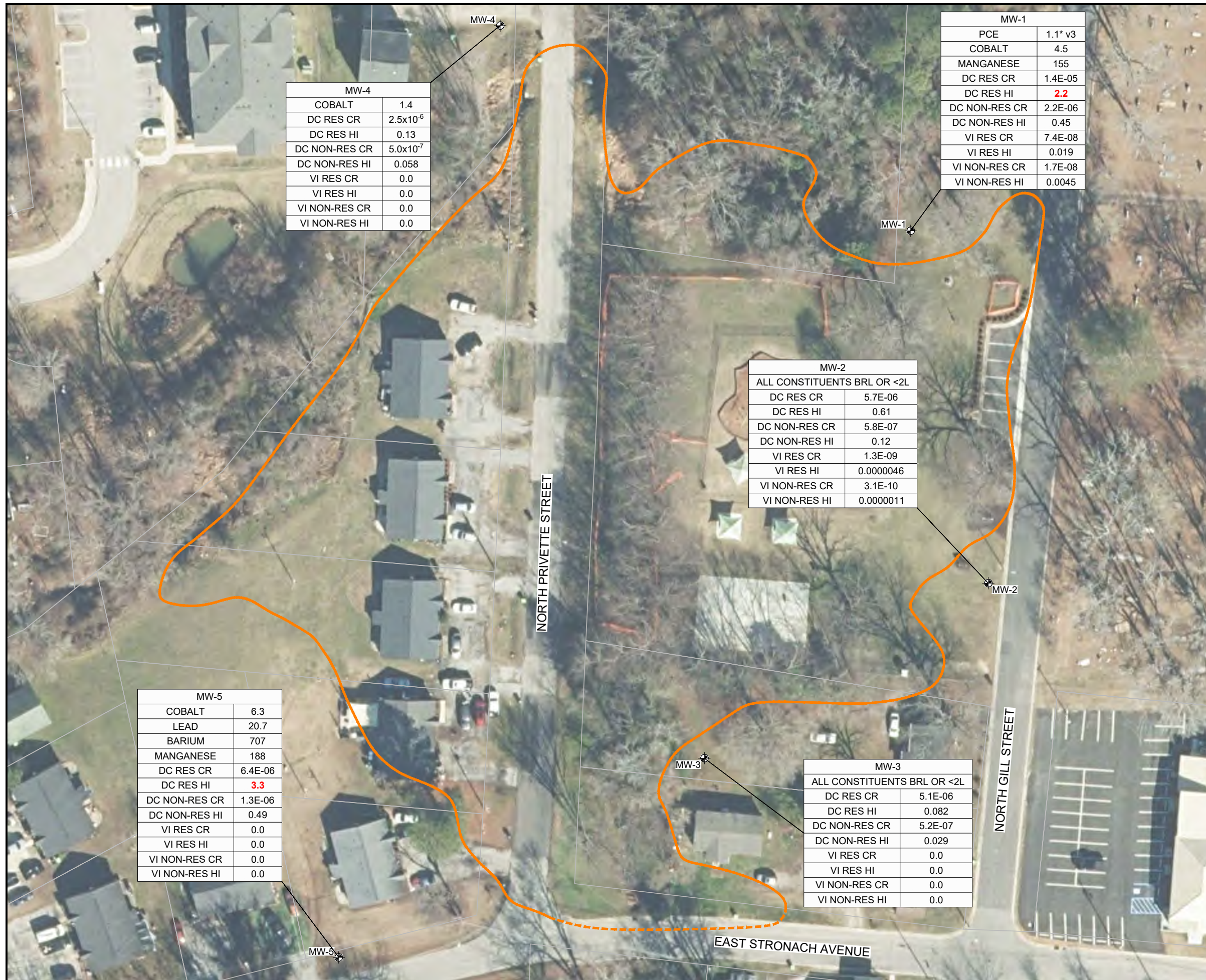


S:\AAA-Master Projects\PR\007 Gill Street Park\Reprints\RI-3-4 Delineation Borings\Figures\PR\007\_20251210.dwg, FIG 7, 3/4/2026 12:33:32 PM, drabum



MW-4	
COBALT	1.4
DC RES CR	2.5x10 <sup>-6</sup>
DC RES HI	0.13
DC NON-RES CR	5.0x10 <sup>-7</sup>
DC NON-RES HI	0.058
VI RES CR	0.0
VI RES HI	0.0
VI NON-RES CR	0.0
VI NON-RES HI	0.0

MW-1	
PCE	1.1* v3
COBALT	4.5
MANGANESE	155
DC RES CR	1.4E-05
DC RES HI	<b>2.2</b>
DC NON-RES CR	2.2E-06
DC NON-RES HI	0.45
VI RES CR	7.4E-08
VI RES HI	0.019
VI NON-RES CR	1.7E-08
VI NON-RES HI	0.0045

MW-2	
ALL CONSTITUENTS BRL OR <2L	
DC RES CR	5.7E-06
DC RES HI	0.61
DC NON-RES CR	5.8E-07
DC NON-RES HI	0.12
VI RES CR	1.3E-09
VI RES HI	0.0000046
VI NON-RES CR	3.1E-10
VI NON-RES HI	0.0000011

MW-5	
COBALT	6.3
LEAD	20.7
BARIUM	707
MANGANESE	188
DC RES CR	6.4E-06
DC RES HI	<b>3.3</b>
DC NON-RES CR	1.3E-06
DC NON-RES HI	0.49
VI RES CR	0.0
VI RES HI	0.0
VI NON-RES CR	0.0
VI NON-RES HI	0.0

MW-3	
ALL CONSTITUENTS BRL OR <2L	
DC RES CR	5.1E-06
DC RES HI	0.082
DC NON-RES CR	5.2E-07
DC NON-RES HI	0.029
VI RES CR	0.0
VI RES HI	0.0
VI NON-RES CR	0.0
VI NON-RES HI	0.0

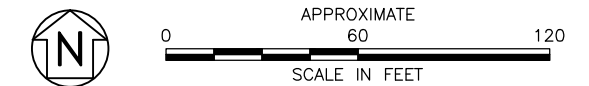
**LEGEND**

- WASTE DISPOSAL AREA (DASHED WHERE INFERRED)
- PARCEL LINE
- PERMANENT MONITORING WELL

CONSTITUENT / SAMPLE ID

MW-1		CONCENTRATION (µg/L)	CALCULATED RISKS
PCE	1.1* v3		
COBALT	4.5		
MANGANESE	155		
DC RES CR	1.4E-05		
DC RES HI	<b>2.2</b>		
DC NON-RES CR	2.2E-06		
DC NON-RES HI	0.45		
VI RES CR	7.4E-08		
VI RES HI	0.019		
VI NON-RES CR	1.7E-08		
VI NON-RES HI	0.0045		

- NOTES:**
- AERIAL IMAGERY OBTAINED FROM NC ONEMAP, 2025.
  - BASE DATA OBTAINED FROM WAKE COUNTY GIS, 2025.
  - GROUNDWATER SAMPLES MW-01, MW-02, AND MW-03 WERE SAMPLED BY H&H ON JULY 15, 2025. GROUNDWATER SAMPLES MW-04 AND MW-05 WERE SAMPLED BY H&H ON NOVEMBER 20, 2025.
  - ONLY CONSTITUENTS DETECTED ABOVE NC 2L GROUNDWATER STANDARDS ARE SHOWN.
  - RED** RISK VALUES EXCEED THE ACCEPTABLE LEVELS OF 1.0E-04 FOR CARCINOGENIC RISK OR 1.0 FOR HAZARD INDEX.
  - PCE = TETRACHLOROETHENE  
RES CR = RESIDENTIAL CARCINOGENIC RISK  
RES HI = RESIDENTIAL HAZARD INDEX  
NON-RES CR = NON-RESIDENTIAL CARCINOGENIC RISK  
NON-RES HI = NON-RESIDENTIAL HAZARD INDEX  
DC = DIRECT CONTACT  
VI = VAPOR INTRUSION  
µg/L = MICROGRAMS PER LITER  
BRL = BELOW LABORATORY REPORTING LIMIT  
\* = ANALYTE CONCENTRATION REPRESENTATIVE OF SAMPLE DUPLICATE  
v3 = THE CONTINUING CALIBRATION VERIFICATION WAS BELOW THE METHOD ACCEPTANCE LIMIT AND CONCENTRATIONS MAY HAVE LOW BIAS



**GROUNDWATER CONSTITUENT CONCENTRATION MAP**

GILL STREET PARK - NONCD0000201  
NORTH GILL STREET  
ZEBULON, NORTH CAROLINA

SMARTER ENVIRONMENTAL SOLUTIONS

JOB NO. PRL-007	DATE: 3-4-26	FIGURE NO. 7
-----------------	--------------	--------------