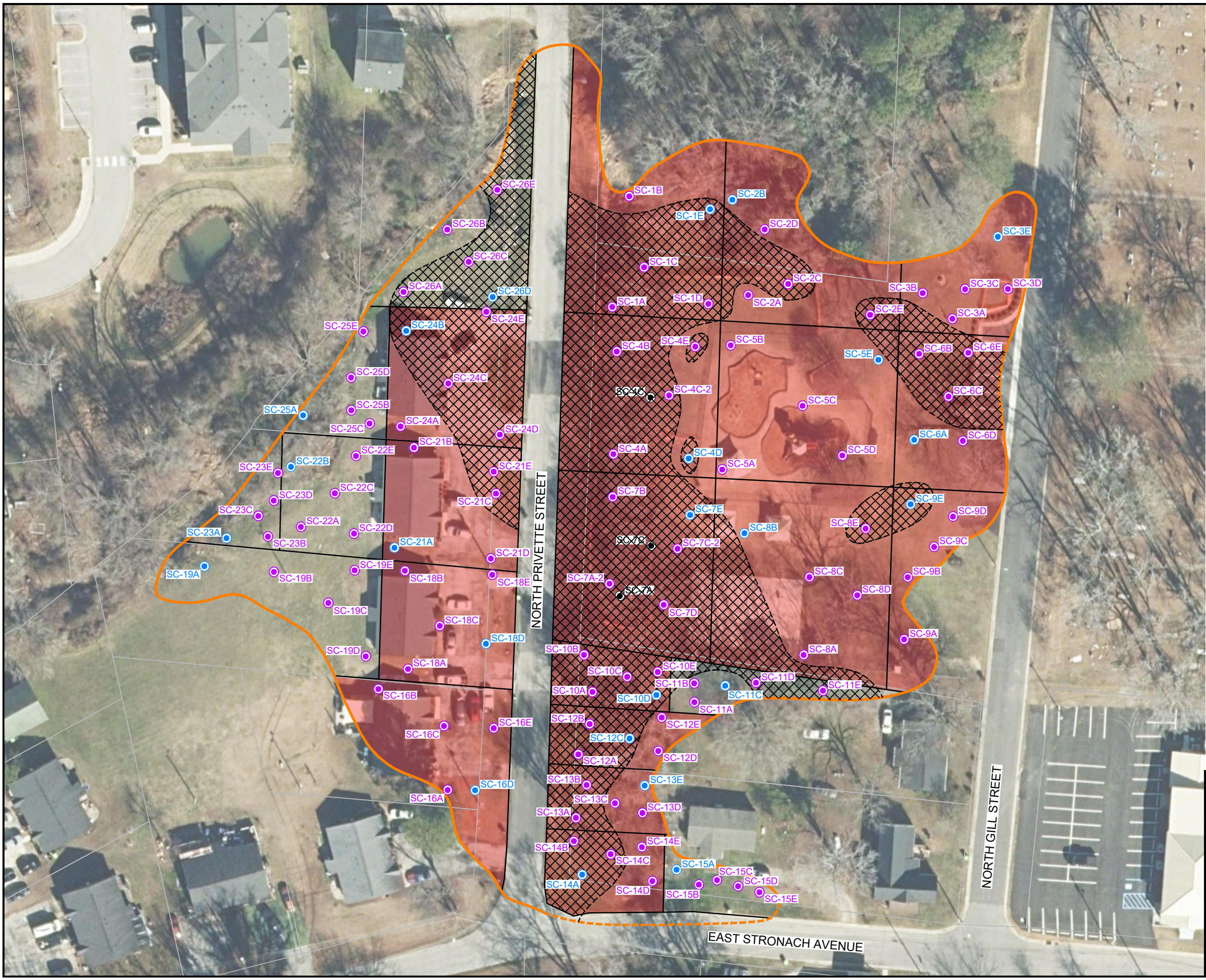


A:\AAA-Master Projects\PR\PR\007 Gill Street Park\Reprints\RI-5 Soil Cover Sampling\Figures\PR_007_20260202.dwg, FIG 6-SCB, 3/18/2026 8:36:01 AM, shaynes

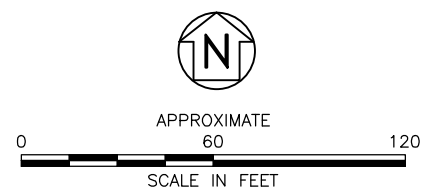


LEGEND

- WASTE DISPOSAL AREA (DASHED WHERE INFERRED)
- PARCEL LINE
- SOIL COVER BORING (DISCRETE VOC SAMPLE AND ALIQUOT FOR COMPOSITE SAMPLE) (2026)
- SOIL COVER BORING (ALIQUOT FOR COMPOSITE SAMPLE) (2026)
- SOIL COVER BORING (SURFICIAL WASTE)
- GRID WITH LEAD EXCEEDANCE
- GRID WITH NO RISK EXCEEDANCE
- <1.0' OF SOIL COVER

NOTES:

1. AERIAL IMAGERY OBTAINED FROM NC ONEMAP, 2025.
2. BASE DATA OBTAINED FROM WAKE COUNTY GIS, 2025.



SOIL COVER EVALUATION - RISK EXCEEDANCES

GILL STREET PARK - NONCD0000201
 NORTH GILL STREET
 ZEBULON, NORTH CAROLINA



JOB NO. PRL-007 | DATE: 3-18-26 | FIGURE NO. 6