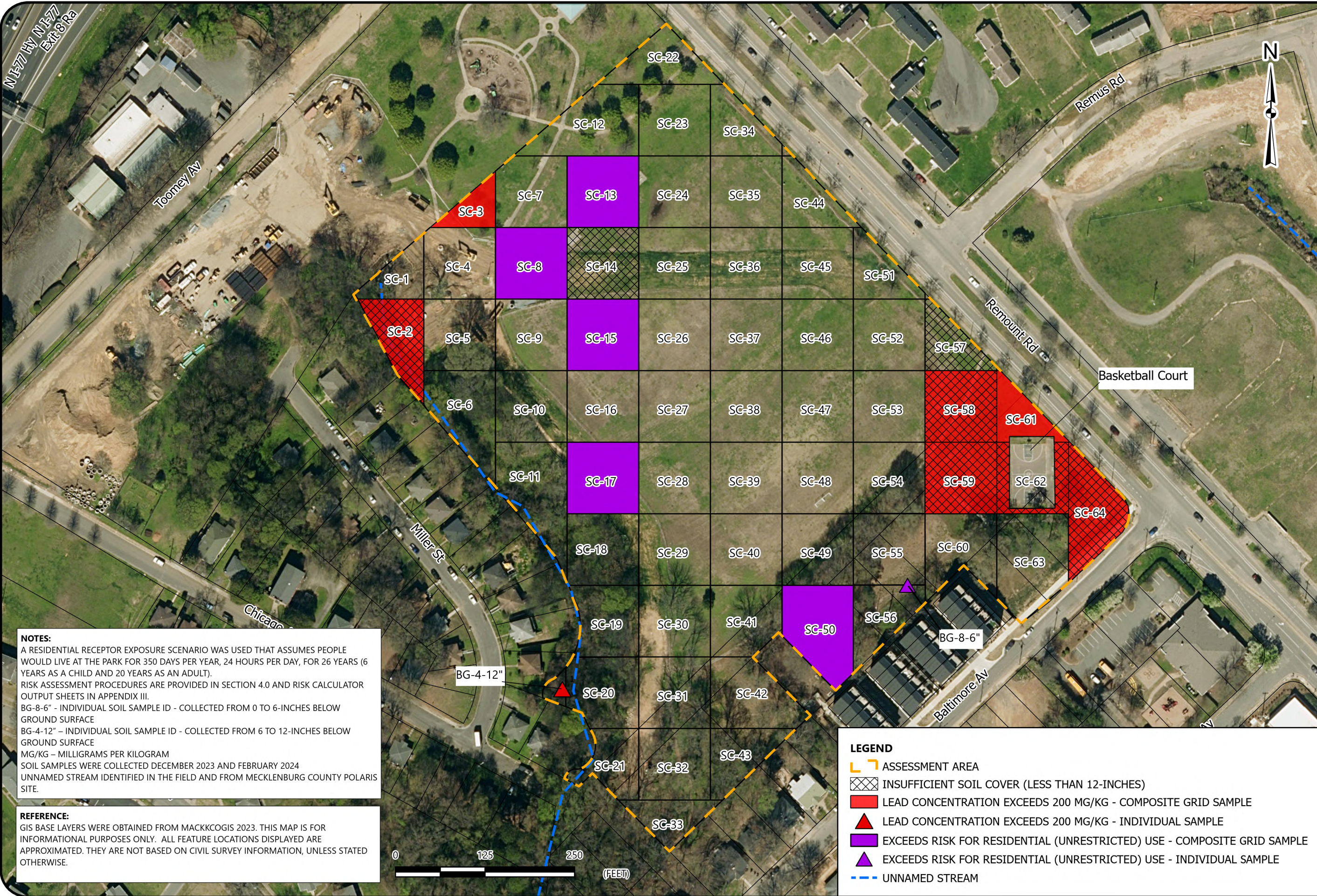


Drawing Path: T:\Raleigh-1050\Projects\2021\215952_NCDEQ_Southside Park Assessments_Chartotte_NC\GIS\RI-1 & RI-2\ARCPRO Files\Southside Park Landfill Map\Southside Park LF 7-30-24 Update.aprx plotted by jmsabry



NOTES:
 A RESIDENTIAL RECEPTOR EXPOSURE SCENARIO WAS USED THAT ASSUMES PEOPLE WOULD LIVE AT THE PARK FOR 350 DAYS PER YEAR, 24 HOURS PER DAY, FOR 26 YEARS (6 YEARS AS A CHILD AND 20 YEARS AS AN ADULT).
 RISK ASSESSMENT PROCEDURES ARE PROVIDED IN SECTION 4.0 AND RISK CALCULATOR OUTPUT SHEETS IN APPENDIX III.
 BG-8-6" - INDIVIDUAL SOIL SAMPLE ID - COLLECTED FROM 0 TO 6-INCHES BELOW GROUND SURFACE
 BG-4-12" - INDIVIDUAL SOIL SAMPLE ID - COLLECTED FROM 6 TO 12-INCHES BELOW GROUND SURFACE
 MG/KG - MILLIGRAMS PER KILOGRAM
 SOIL SAMPLES WERE COLLECTED DECEMBER 2023 AND FEBRUARY 2024
 UNNAMED STREAM IDENTIFIED IN THE FIELD AND FROM MECKLENBURG COUNTY POLARIS SITE.

REFERENCE:
 GIS BASE LAYERS WERE OBTAINED FROM MACKKCOGIS 2023. THIS MAP IS FOR INFORMATIONAL PURPOSES ONLY. ALL FEATURE LOCATIONS DISPLAYED ARE APPROXIMATED. THEY ARE NOT BASED ON CIVIL SURVEY INFORMATION, UNLESS STATED OTHERWISE.

- LEGEND**
- ASSESSMENT AREA
 - INSUFFICIENT SOIL COVER (LESS THAN 12-INCHES)
 - LEAD CONCENTRATION EXCEEDS 200 MG/KG - COMPOSITE GRID SAMPLE
 - LEAD CONCENTRATION EXCEEDS 200 MG/KG - INDIVIDUAL SAMPLE
 - EXCEEDS RISK FOR RESIDENTIAL (UNRESTRICTED) USE - COMPOSITE GRID SAMPLE
 - EXCEEDS RISK FOR RESIDENTIAL (UNRESTRICTED) USE - INDIVIDUAL SAMPLE
 - UNNAMED STREAM



SOIL COVER ASSESSMENT SUMMARY

SOUTHSIDE PARK LANDFILL
 NCDEQ ID NO. NONCD000807 - TASK ORDER 807RI-2
 TOOMEY AVE, CHARLOTTE, MECKLENBURG COUNTY, NORTH CAROLINA

SCALE:
1 in = 125 ft

Date:
8/1/2024

PROJECT NUMBER
215952

FIGURE NO.

7