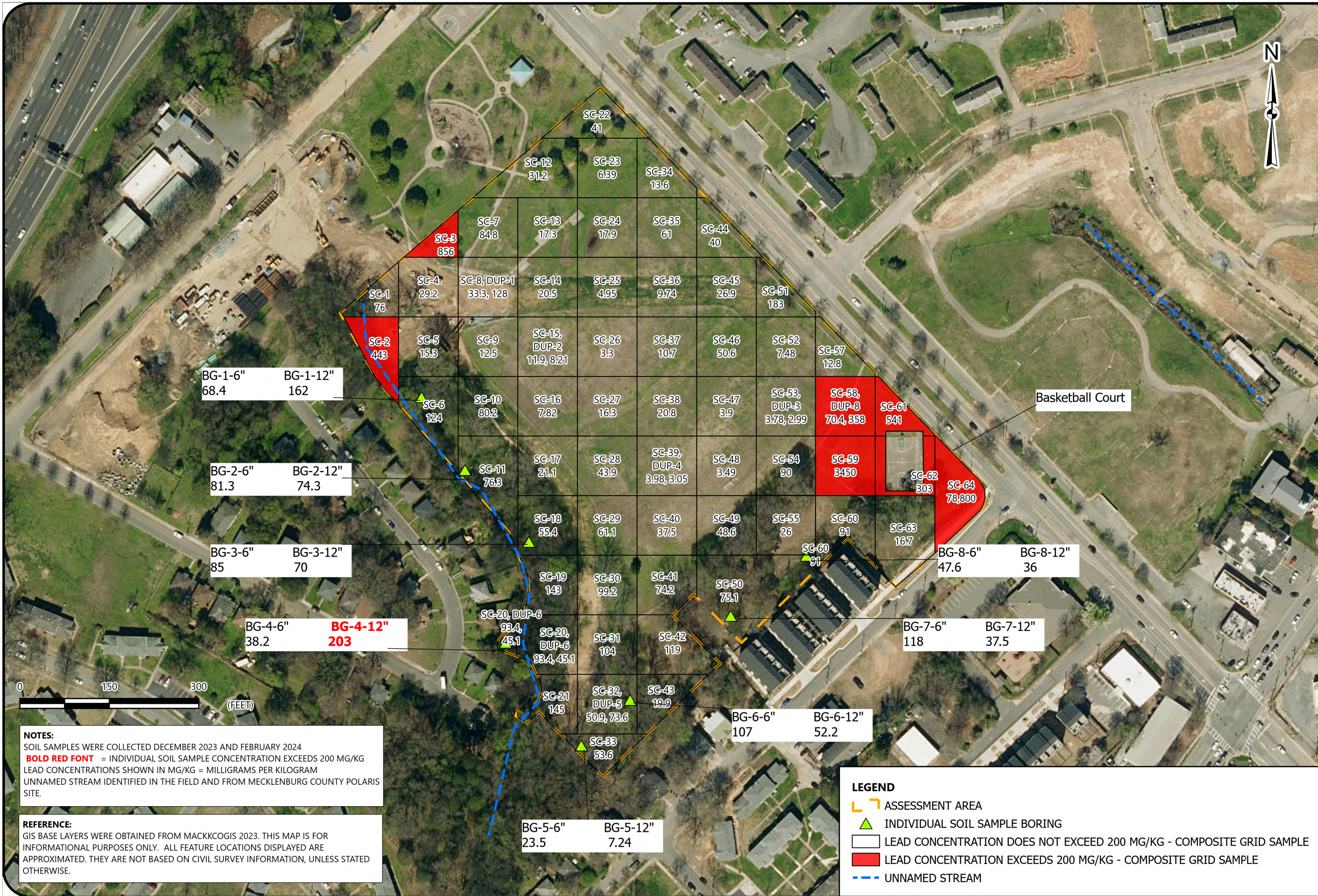


Drawing Path: T:\Raleigh-1050\Projects\2021\215952\_NCDEQ\_Southside Park Assessments\_Charlotte\_NC\GIS\RI-1 & RI-2\ARCPRO Files\Southside Park Landfill Map\Southside Park LF 7-30-24 Update.aprx plotted by jmsabry



**NOTES:**  
 SOIL SAMPLES WERE COLLECTED DECEMBER 2023 AND FEBRUARY 2024  
**BOLD RED FONT** = INDIVIDUAL SOIL SAMPLE CONCENTRATION EXCEEDS 200 MG/KG  
 LEAD CONCENTRATIONS SHOWN IN MG/KG = MILLIGRAMS PER KILOGRAM  
 UNNAMED STREAM IDENTIFIED IN THE FIELD AND FROM MECKLENBURG COUNTY POLARIS SITE.

**REFERENCE:**  
 GIS BASE LAYERS WERE OBTAINED FROM MACKKCOGIS 2023. THIS MAP IS FOR INFORMATIONAL PURPOSES ONLY. ALL FEATURE LOCATIONS DISPLAYED ARE APPROXIMATED. THEY ARE NOT BASED ON CIVIL SURVEY INFORMATION, UNLESS STATED OTHERWISE.

**LEGEND**

- ASSESSMENT AREA
- ▲ INDIVIDUAL SOIL SAMPLE BORING
- LEAD CONCENTRATION DOES NOT EXCEED 200 MG/KG - COMPOSITE GRID SAMPLE
- LEAD CONCENTRATION EXCEEDS 200 MG/KG - COMPOSITE GRID SAMPLE
- UNNAMED STREAM



**SOIL COVER LEAD CONCENTRATIONS MAP**

SOUTHSIDE PARK LANDFILL  
 NCDEQ ID NO. NONCD000807 - TASK ORDER 807RI-2  
 TOOMEY AVE, CHARLOTTE, MECKLENBURG COUNTY, NORTH CAROLINA

SCALE:  
 1 in = 150 ft

Date:  
 7/31/2024

PROJECT NUMBER  
 215952

FIGURE NO.

**5**