

Descriptive Boundaries for Coastal-Joint-Inland Waters (15A NCAC 03Q .0202)

Rule History Note:
 Authority G.S. 113-132;
 113-134;
 143B-289.52;
 Effective February 1, 1991;
 Amended Eff. June 1, 2013;
 August 1, 2004;
 July 1, 1993;
 September 1, 1991.

Descriptive Boundaries for Coastal-Joint-Inland Waters

- lat/long point
- boundary
- ▬ Coastal Waters
- ▨ Joint Waters
- Inland Waters

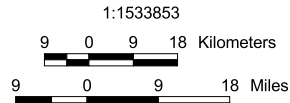
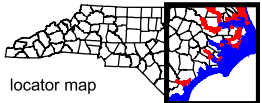
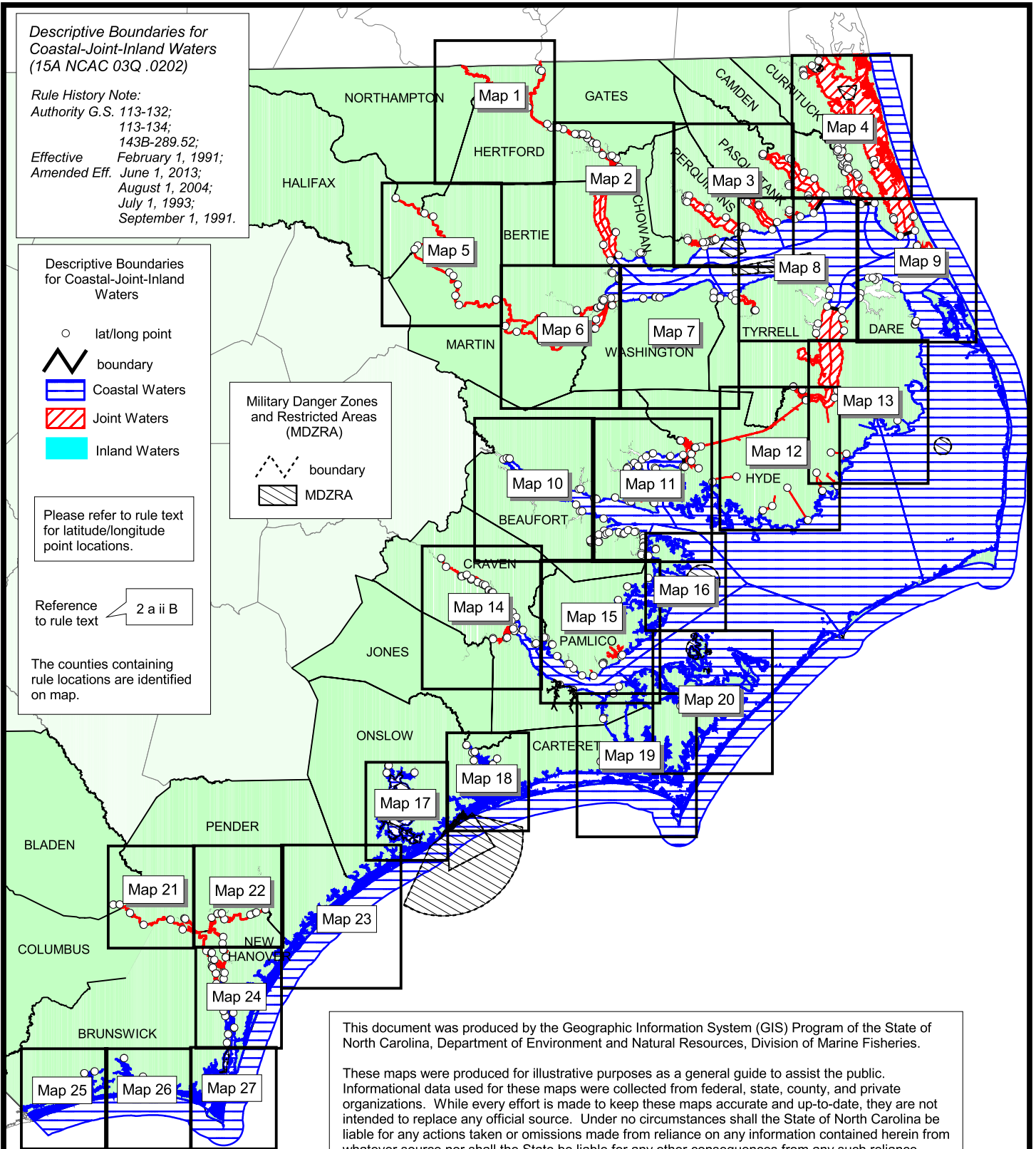
Please refer to rule text for latitude/longitude point locations.

Reference to rule text 2 a ii B

The counties containing rule locations are identified on map.

Military Danger Zones and Restricted Areas (MDZRA)

- - - boundary
- ▨ MDZRA



Descriptive Boundaries for Coastal-Joint-Inland Waters (15A NCAC 03Q .0202)

(Location Map)
 Map A



Map Datum: North American Datum 1983 (NAD83)
 Map Projection: North Carolina State Plane (NC State Plane)
 Map Date: June 1, 2013

