

PERMITS

IN THE NEW RIVER BASIN

PERMITS LISTED

- 🔹 NPDES: Point Source Discharge
- 🔹 NPDES: Non-Discharge
- 🔹 Stormwater
- 🔹 Animal Operations

NPDES PERMITS

TABLE 14-1: NPDES POINT SOURCE DISCHARGER PERMITS IN THE NEW RIVER BASIN

PERMIT #	FACILITY NAME	PERMIT TYPE	CLASS	RECEIVING STREAM	PERMITTED FLOW (GPD)
North Fork New River Watershed (HUC 0505000101)					
NC0000019	United Chemi-Con, Inc.	Industrial Process & Commercial	Minor	North Fork New River	38,000
NC0020451*	West Jefferson WWTP	Municipal, < 1MGD	Major	Little Buffalo Creek	500,000
NC0030325	Buffalo Meadows WWTP	100% Domestic < 1MGD	Minor	Buffalo Creek	10,000
NC0066028	Lansing WWTP	Municipal, < 1MGD	Minor	Big Horse Creek	50,000
NCG500267	Elk Creek Lumber	Non-contact Cooling, Boiler Blowdown Wastewater Discharge COC	Minor	Little Buffalo Creek	0
NCG550478	2634 Old Highway 16	Single Family Domestic Wastewater Discharge COC	Minor	Little Phoenix Creek	450
South Fork New River & Fox Creek Watersheds (HUC 0505000102 & 0505000103)					
NC0020621*	Jimmy Smith WWTP (Town of Boone)	Municipal, Large	Major	South Fork New River	4,820,000
NC0021709*	Jefferson WWTP	Municipal, < 1MGD	Major	Naked Creek	300,000
NC0027286	Blowing Rock WWTP	Municipal, < 1MGD	Minor	Middle Fork SFNR	800,000
NC0030848	Jefferson Apparel Company WWTP	100% Domestic < 1MGD	Minor	Dog Creek	8,000
NC0032131	Tweetsie Railroad	100% Domestic < 1MGD	Minor	Middle Fork SFNR	175,000
NC0032158	Roaring River Chalets	100% Domestic < 1MGD	Minor	Middle Fork SFNR	5,000
NC0039608	Summit Woods Apartments WWTP	100% Domestic < 1MGD	Minor	Middle Fork SFNR	8,300
NC0044423	Appalachian State WTP	Water Treatment Plant	Minor	Norris Branch	not limited
NC0067016	Parkway Elementary School	100% Domestic < 1MGD	Minor	Laxon Creek	5,000
NC0083470	Jefferson WTP	Water Treatment Plant	Minor	Naked Creek	not limited
NCG500206	International Resistive Company	Non-contact Cooling, Boiler Blowdown Wastewater Discharge COC	Minor	Winkler Creek	0
NCG510152	Former Shell Dollar Mart #5	Groundwater Remediation Wastewater Discharge COC	Minor	Gap Creek	0
NCG550407	2684 Boggs Road	Single Family Domestic Wastewater Discharge COC	Minor	South Fork New River	300
NCG550430	Riverside Drive / Lot 667	Single Family Domestic Wastewater Discharge COC	Minor	New River	300
Little River & Chestnut Creek Watersheds (HUC 0505000104 & 0505000106)					
NC0026913 ¹	Sparta WWTP	Municipal, < 1MGD	Minor ¹	Little River	600,000
NC0078158	Olde Beau Golf Club WWTP	100% Domestic < 1MGD	Minor	Laurel Branch (Laurel Creek)	20,000
NC0084832	Nikolas' Restaurant & High Meadow Inn LLC	100% Domestic < 1MGD	Minor	Laurel Branch (Laurel Creek)	25,000

¹ The Sparta WWTPs Pretreatment Program became inactive in January 2011 when it also became a Minor permit. Even though tables and maps have been changed to reflect the new status, the facility was considered Major during this planning cycle.

TABLE 14-2: NPDES NON-DISCHARGER PERMITS IN THE NEW RIVER BASIN

PERMIT #	FACILITY NAME	PERMIT TYPE	CLASS
North Fork New River Watershed (HUC 0505000101)			
WQ0007149	United Chemi-Con Inc.	Wastewater Recycling	Minor
South Fork New River & Fox Creek Watersheds (HUC 0505000102 & 0505000103)			
WQ0004166	Town of Jefferson Residuals Land Application Program	Land Application of Residual Solids (503)	Minor
WQ0013263	Town of Boone High Country 5-5-0 Drying Facility and Distribution Program	Distribution of Residual Solids (503)	Minor
WQ0020293	Jimmy Smith WWTP (Town of Boone)	Gravity Sewer Extension, Pump Stations, & Pressure Sewer Extensions	Minor
WQ0022120	Jefferson WWTP	Reuse	Minor
WQ0022155	Jefferson WWTP	Distribution of Residual Solids (503)	Minor
WQ0021731	Wastewater Reuse System	Reuse	Minor
WQ0010878	West Campus	Surface Irrigation	Major
WQ0012694	Maharishi Spiritual CT-East Campus	Surface Irrigation	Major
WQ0015515	Heavenly Mountain Resort	Surface Irrigation	Major
Little River & Chestnut Creek Watersheds (HUC 0505000104 & 0505000106)			
WQ0006242	Town of Sparta Residuals Land Application Site	Residuals	Minor

* Permits from the two previous tables are mapped on the NPDES Permits map found in the [Maps Chapter](#).

STORMWATER PERMITS

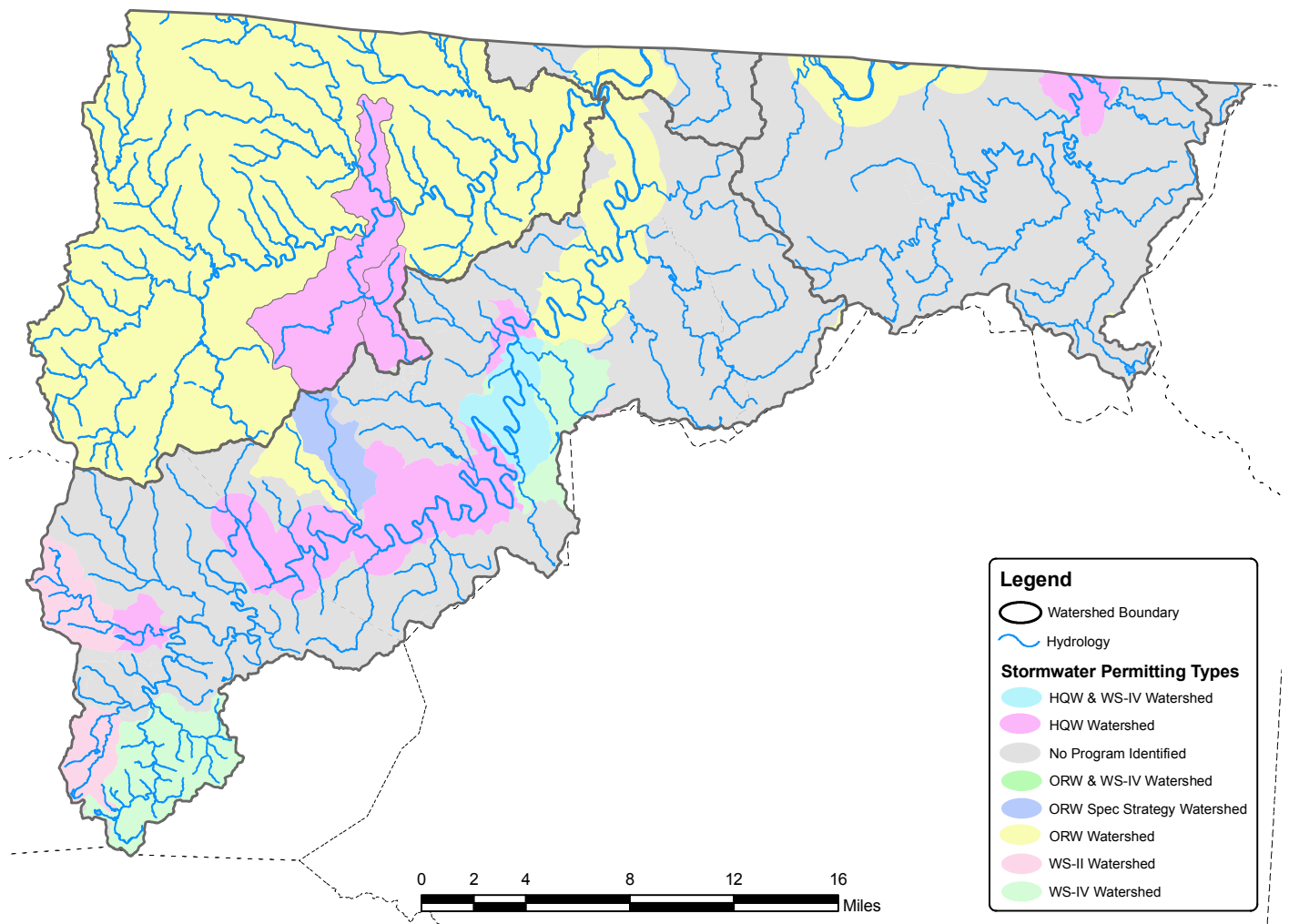
TABLE 14-3: COMMUNITIES IN THE NEW RIVER BASIN SUBJECT TO STORMWATER AND/OR WATER SUPPLY WATERSHED STORMWATER REQUIREMENTS.

LOCAL GOVERNMENT	NPDES		STATE STORMWATER PROGRAM	WATER SUPPLY WATERSHED STORMWATER REQUIREMENTS
	PHASE I	PHASE II		
Municipalities				
Boone				
Blowing Rock				
Jefferson				
West Jefferson				
Lansing				
Sparta				
Counties				
Ashe				
Alleghany				
Watauga				

TABLE 14-4: STORMWATER PERMITS IN THE NEW RIVER BASIN

PERMIT #	FACILITY NAME	PERMIT TYPE	CLASS
NCR002037	Blowing Rock Art and History Museum	Construction Stormwater	Minor
NCG140100	Chandler Concrete - Watauga	Ready Mix Concrete Stormwater/Wastewater Discharge COC	Minor
NCGNE0378	NC Nat Gd- Boone	Stormwater Discharge, No Exposure Certificate	Minor
NCG160141	Maymead Materials Inc - Boone	Asphalt Paving Mixture Stormwater Discharge COC	Minor
NCG140101	Chandler Concrete - Boone	Ready Mix Concrete Stormwater/Wastewater Discharge COC	Minor
NCG160039	Maymead Materials Inc	Asphalt Paving Mixture Stormwater Discharge COC	Minor
NCG020129	Radford Quarries Of Boone Inc	Mining Activities Stormwater Discharge COC	Minor
NCG080085	Appalachian Energy	Transportation w/Vehicle Maintenance/Petroleum Bulk/Oil Water Separator Stormwater Discharge COC	Minor
NCG140254	Boone Ready-Mix Incorporated	Ready Mix Concrete Stormwater/Wastewater Discharge COC	Minor
NCG140259	R H Loven Co Incorporated	Ready Mix Concrete Stormwater/Wastewater Discharge COC	Minor
NCR002049	Appalcart Waste Site	Construction Stormwater	Minor
NCG180130	Watauga Wood Products Incorporated	Furniture and Fixtures Stormwater Discharge COC	Minor
NCG140098	Chandler Concrete - Ashe County	Ready Mix Concrete Stormwater/Wastewater Discharge COC	Minor
NCG050182	Gates Corporation	Apparel/Printing/Paper/Leather/Rubber Stormwater Discharge COC	Minor
NCGNE0392	NC Nat Gd- Jefferson	Stormwater Discharge, No Exposure Certificate	Minor
NCG080062	Independence Oil & LP Gas Inc	Transportation w/Vehicle Maintenance/Petroleum Bulk/Oil Water Separator Stormwater Discharge COC	Minor
NCG150003	Ashe County Airport Authority	Air Transportation Stormwater Discharge COC	Minor
NCR000458	Ashe County Airport Authority	Construction Stormwater	Minor
NCG020227	Smithport Quarry	Mining Activities Stormwater Discharge COC	Minor
NCG140281	Chandler Concrete - Crumpler	Ready Mix Concrete Stormwater/Wastewater Discharge COC	Minor
NCG160015	Adams Construction Company Inc	Asphalt Paving Mixture Stormwater Discharge COC	Minor
NCG210273	L & E Lumber Co Incorporated	Timber Products Stormwater Discharge COC	Minor
NCGNE0579	United Chemi-Con, Inc.	Stormwater Discharge, No Exposure Certificate	Minor
NCGNE0149	Pioneer Eclipse Corporation	Stormwater Discharge, No Exposure Certificate	Minor
NCG140099	Chandler Concrete - Alleghany	Ready Mix Concrete Stormwater/Wastewater Discharge COC	Minor
NCG120057	Ashe County Environmental Ser	Landfill Stormwater Discharge COC	Minor

FIGURE 14-1: STORMWATER PROGRAM AREAS IN THE NEW RIVER BASIN



ANIMAL OPERATIONS

TABLE 14-5: PERMITTED ANIMAL OPERATIONS IN THE NEW RIVER BASIN AS OF JULY 2010

PERMIT NUMBER	PERMIT TYPE	COUNTY	ALLOWABLE COUNT	SSLW FACTOR	SSLW ¹
Little River & Chestnut Creek Watersheds (HUC 0505000104 & 0505000106)					
AWC030001	Cattle State COC	Alleghany	200	800	160,000
AWC030002	Cattle State COC	Alleghany	400	1,400	560,000
AWC030003	Cattle State COC	Alleghany	500	1,400	700,000
AWC030005	Cattle State COC	Alleghany	200	1,400	280,000
AWC030008	Cattle State COC	Alleghany	275	1,400	385,000
AWC030013	Cattle State COC	Alleghany	150	1,400	210,000
AWC030021	Cattle State COC	Alleghany	130	1,400	182,000
AWC030026	Cattle State COC	Alleghany	262	1,400	366,800
AWC030033	Cattle State COC	Alleghany	466	800	372,800
Total SSLW:					3,216,600

1 - SSLW: The Steady State Live Weight is in pounds, after a conversion factor (SSLW Factor) has been applied to the number of animals on a farm. Conversion factors come from the US Department of Agriculture, Natural Resource Conservation Service guidelines.

A map of where these permits are located can be found in the [Maps Chapter](#).