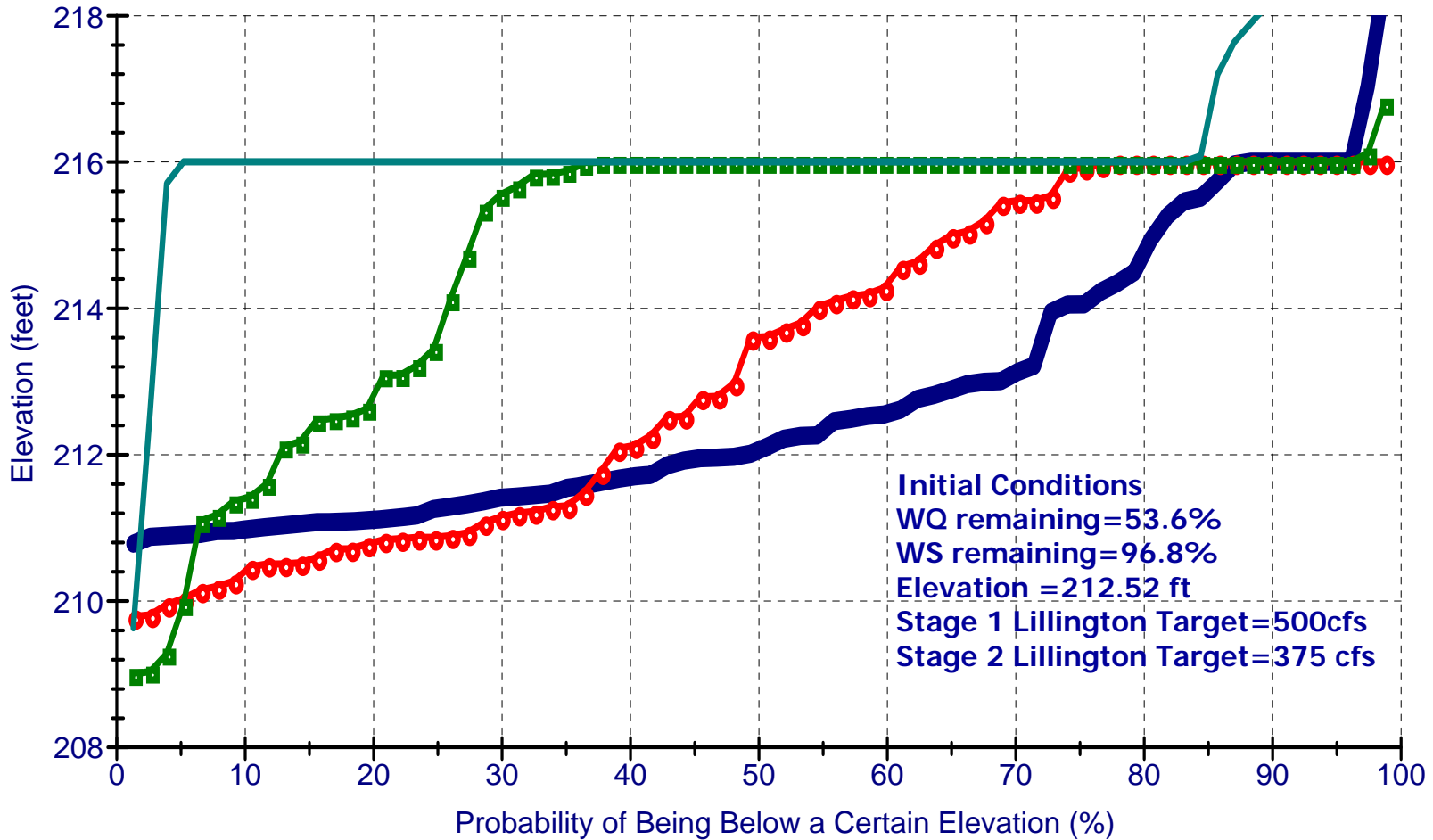


## Jordan Lake Elevation in 4, 8, 16, and 24 Weeks

09\_02\_2007\_cond\_DP\_Init\_WQ\_Int\_WS



4 weeks

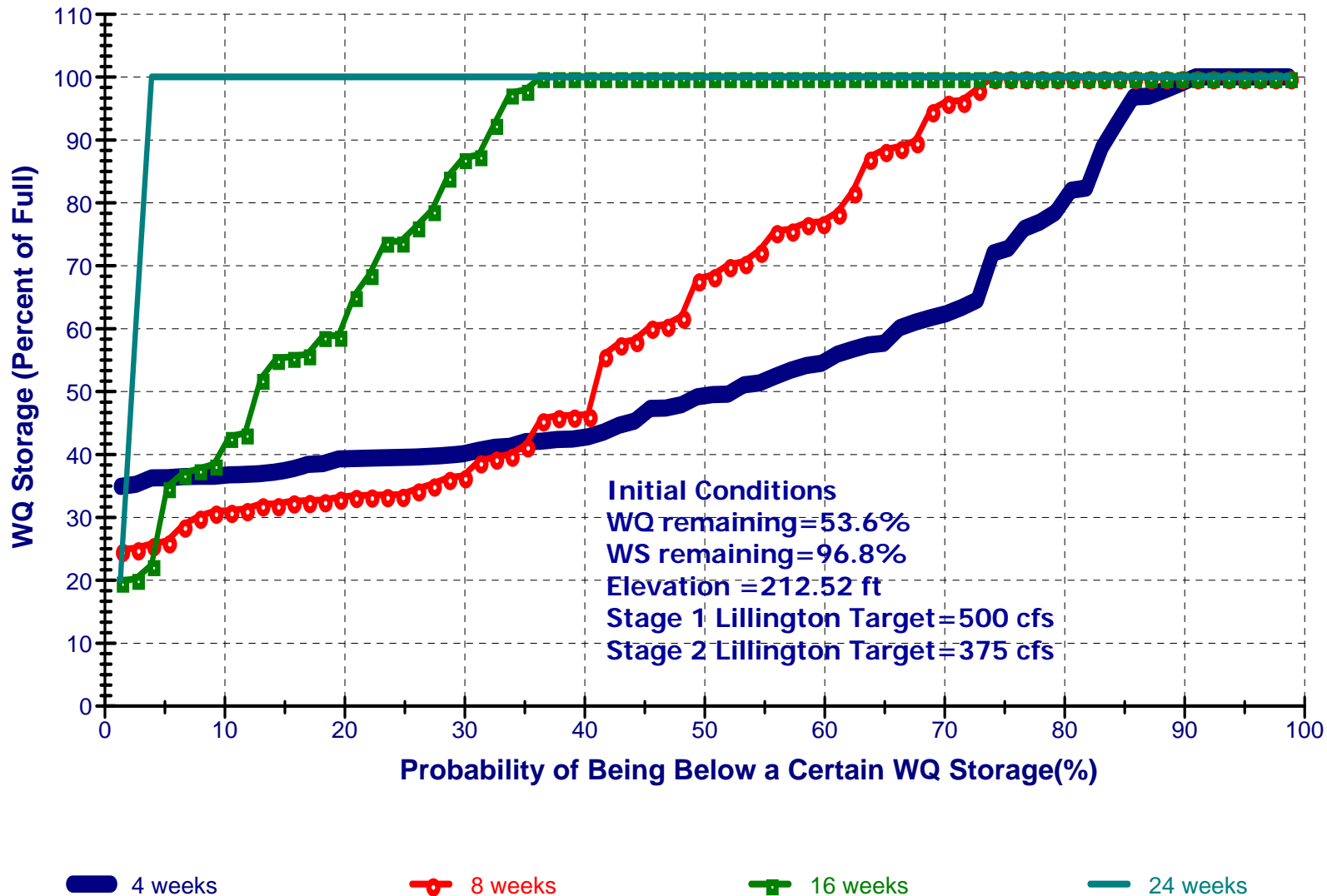
8 weeks

16 weeks

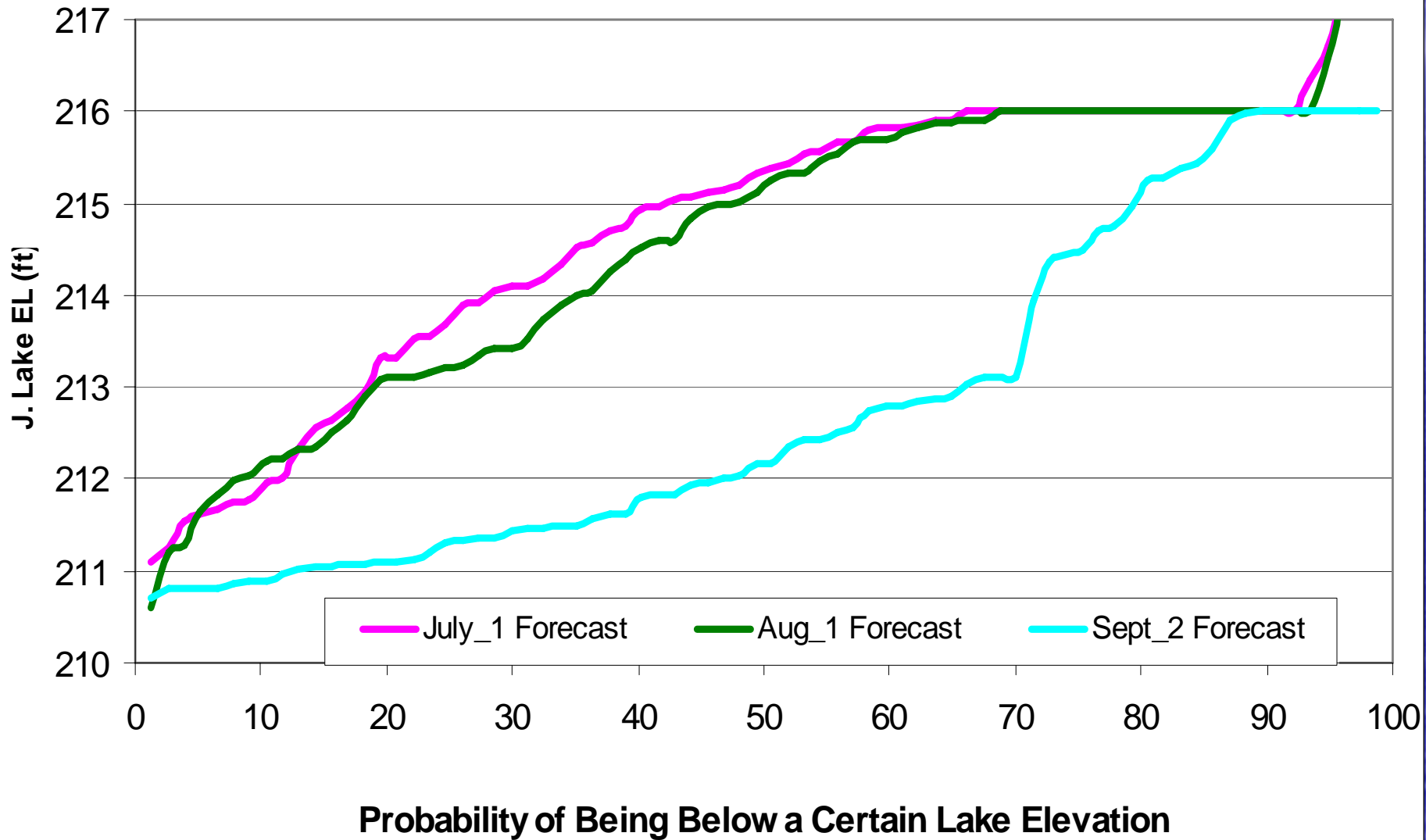
24 weeks

# Jordan Lake WQ Storage in 4, 8, 16, and 24 Weeks

09\_02\_2007\_cond\_DP\_Init\_WQ\_Int\_WS

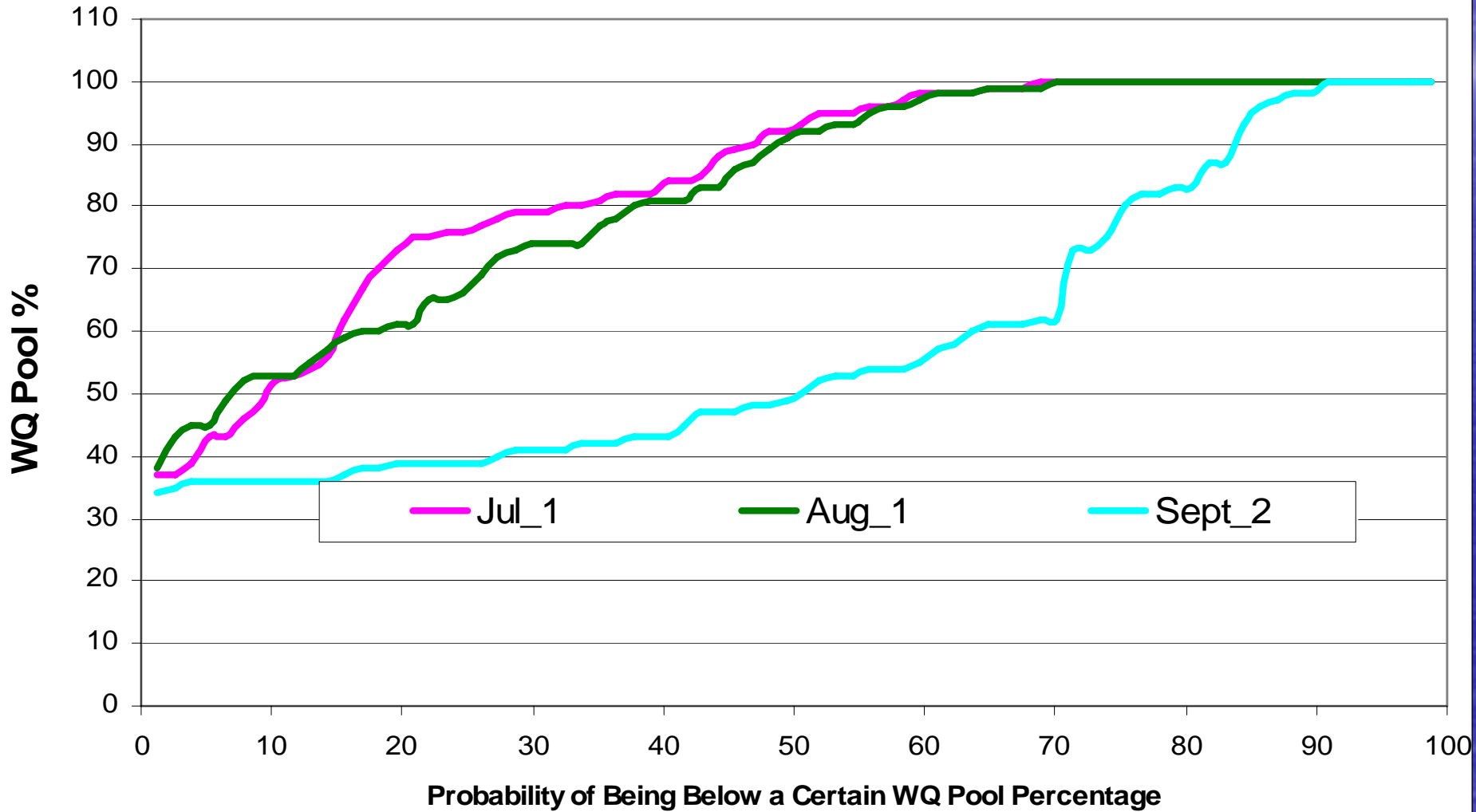


# OASIS Jordan Lake Elevation October 1 Forecast

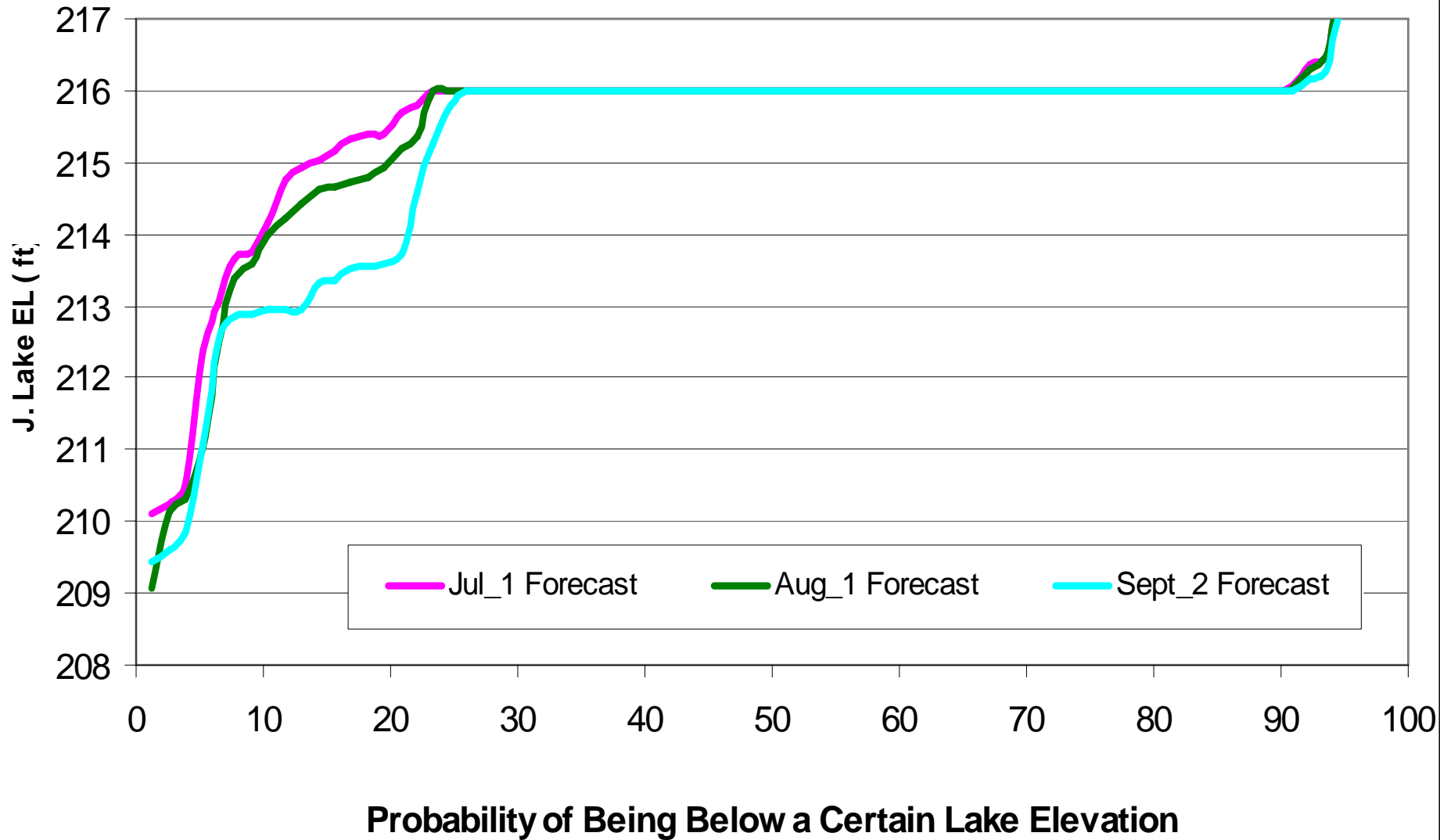


# OASIS Jordan Lake WQ Pool

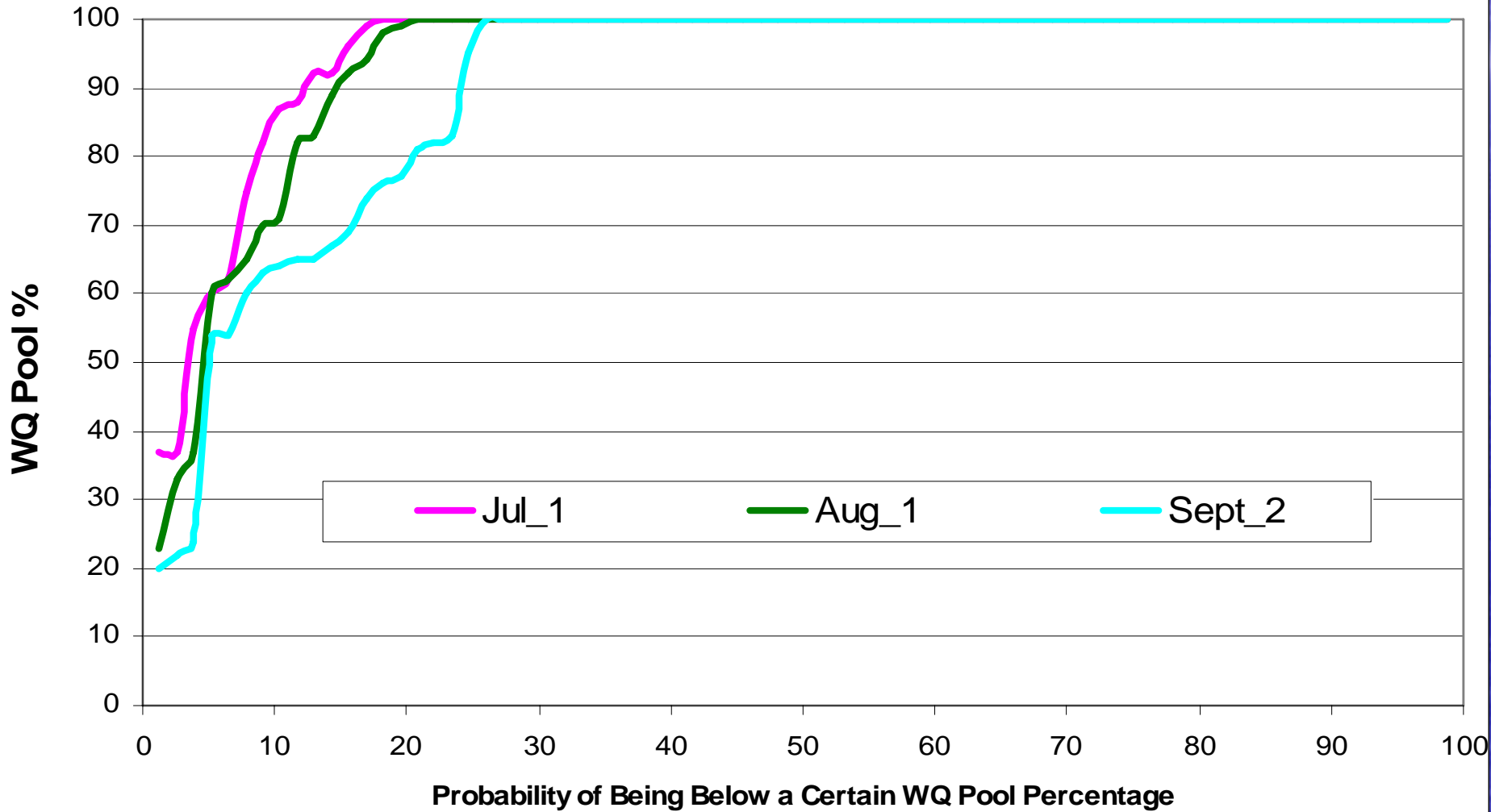
## October 1 2007 Forecast



# OASIS Jordan Lake Elevation January 1 2008 Forecast

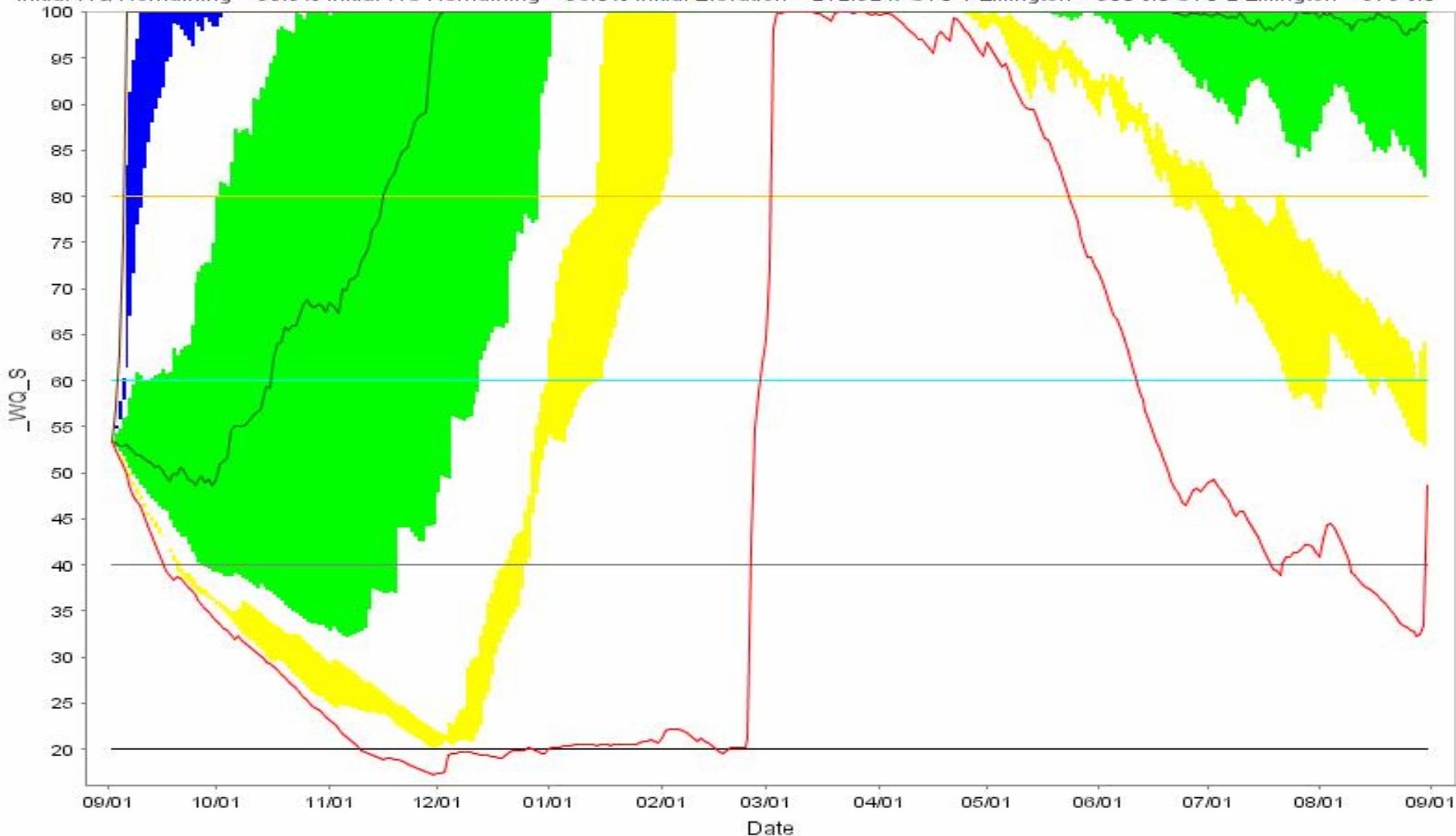


# OASIS Jordan Lake WQ Pool January 1 2008 Forecast



## Percent Remaining in the Water Quality Pool

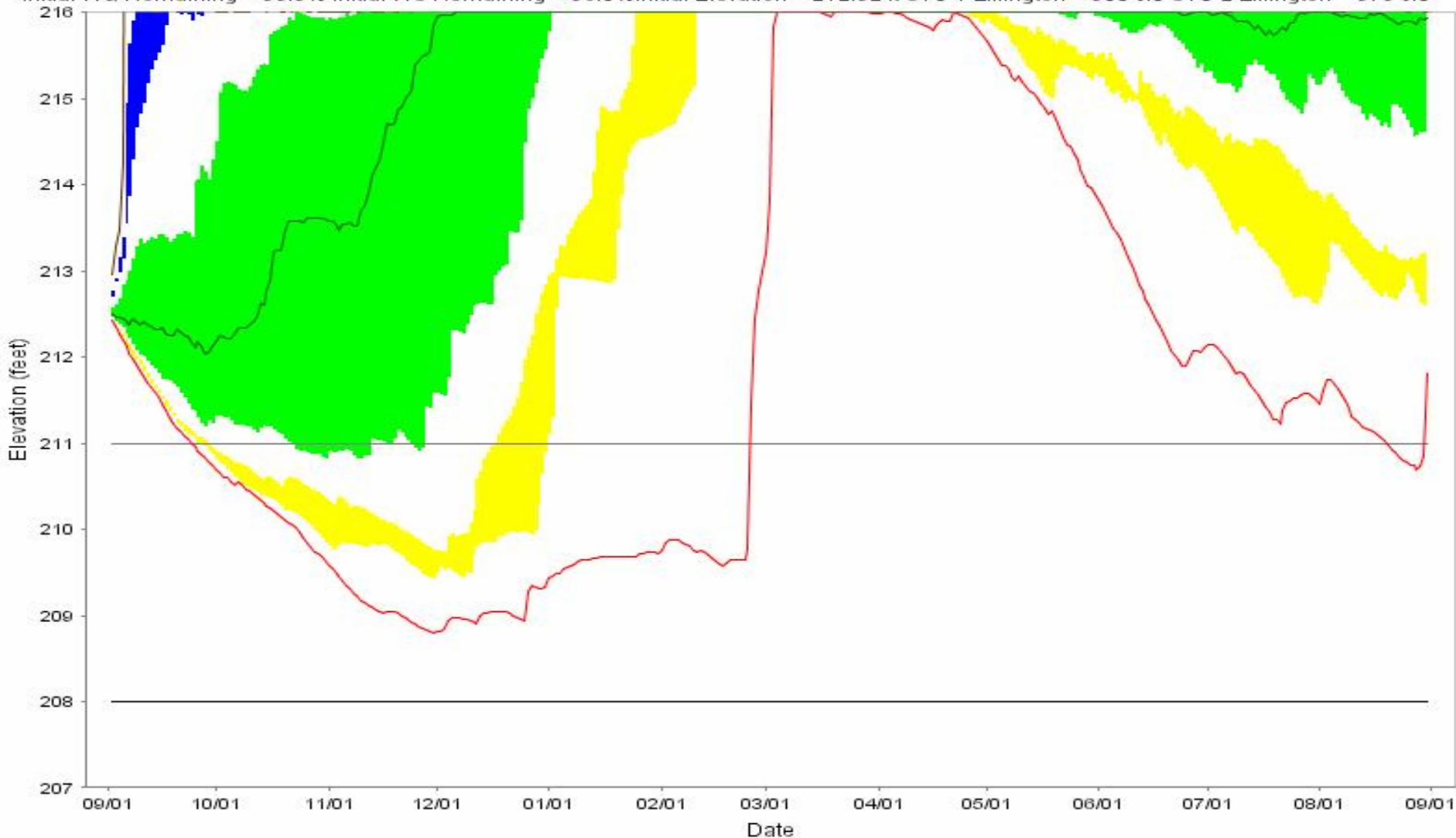
Initial WQ Remaining = 53.5% Initial WS Remaining = 96.8% Initial Elevation = 212.52 ft STG 1 Lillington = 500 cfs STG 2 Lillington = 375 cfs



- Min — Median — Max — 20 — 40 — 60 — 80
- ▲ YELLOW (LOWER) BAND = 5- TO 10-PERCENTILE
- GREEN (MIDDLE) BAND = 25- TO 75-PERCENTILE
- ▲ BLUE (UPPER) BAND = 90- TO 95-PERCENTILE

### Jordan Lake Elevation Forecast

Initial WQ Remaining = 53.5% Initial WS Remaining = 96.8% Initial Elevation = 212.52 ft STG 1 Lillington = 500 cfs STG 2 Lillington = 375 cfs



- Min — Median — Max — 208 feet — 211 feet
- YELLOW (LOWER) BAND = 5- TO 10-PERCENTILE
- GREEN (MIDDLE) BAND = 25- TO 75-PERCENTILE
- BLUE (UPPER) BAND = 90- TO 95-PERCENTILE