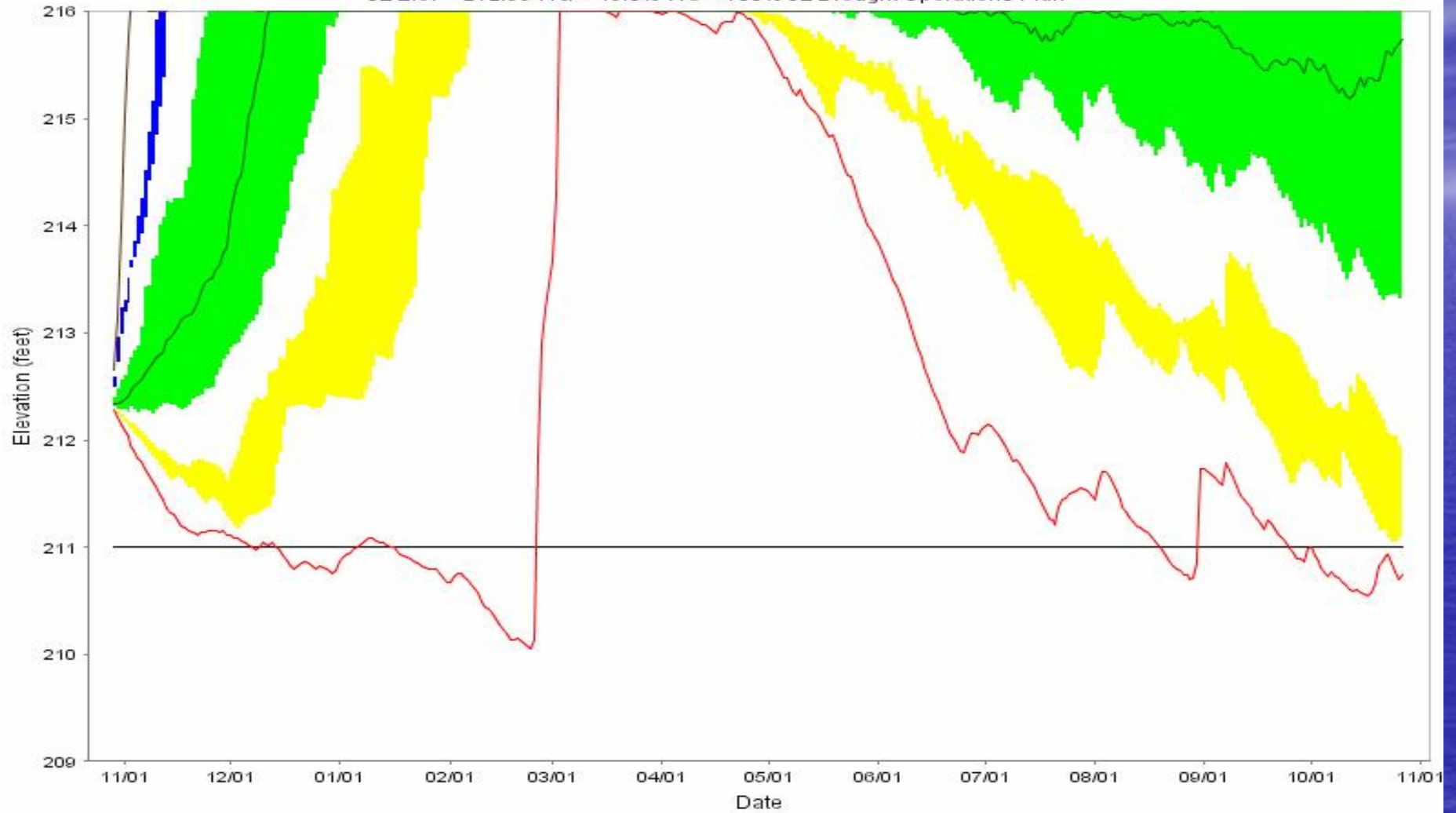


October 29, 2007 Jordan Lake Elevation Forecast

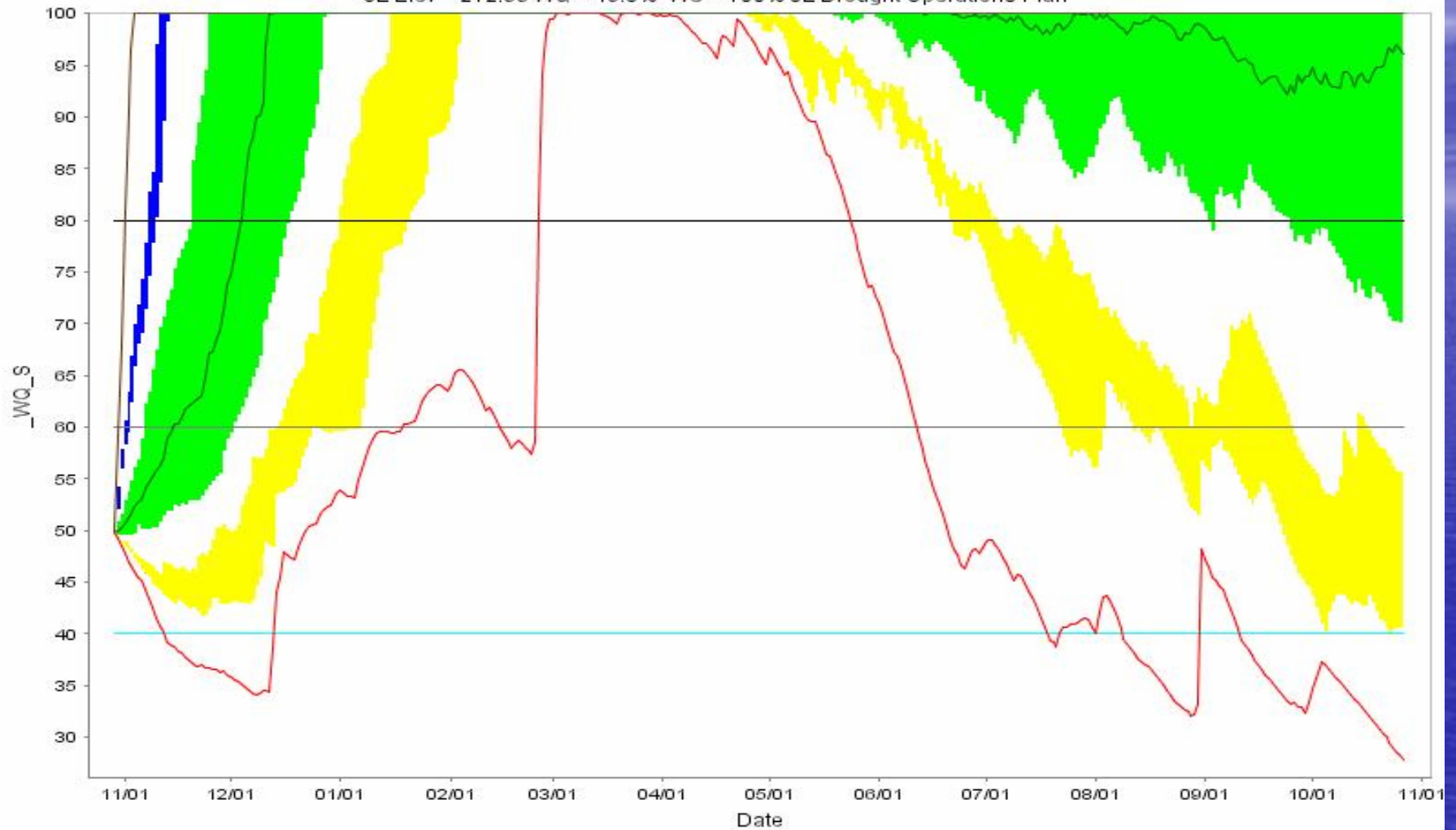
JL Elev = 212.33 WQ = 49.8% WS = 100% JL Drought Operations Plan



- Min — Median — Max — 211 feet — 208 feet
- YELLOW (LOWER) BAND = 5- TO 10-PERCENTILE
- GREEN (MIDDLE) BAND = 25- TO 75-PERCENTILE
- BLUE (UPPER) BAND = 90- TO 95-PERCENTILE

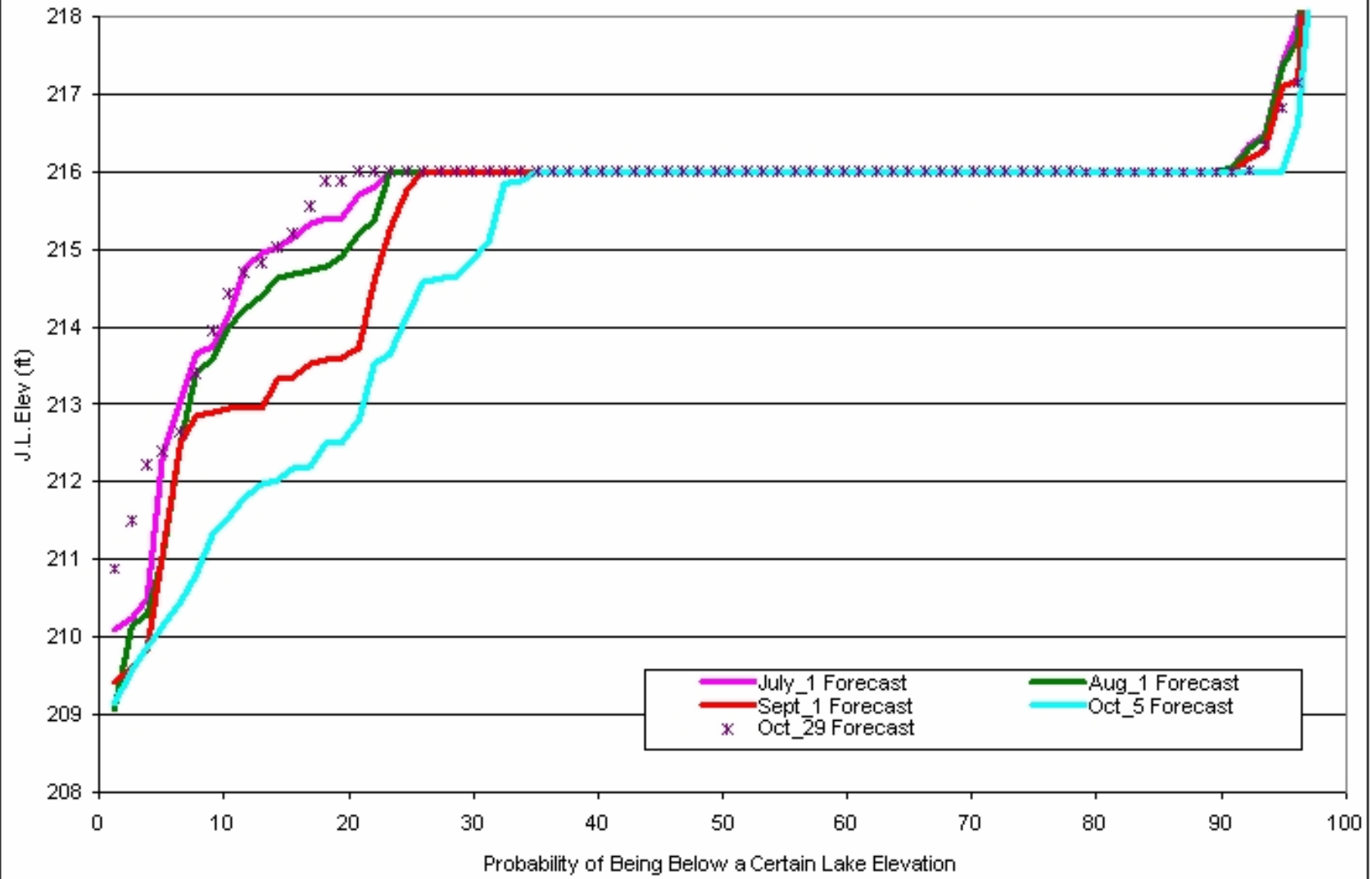
October 29, 2007 forecast of Percent Remaining in the Water Quality Pool

JL Elev = 212.33 WQ = 49.8% WS = 100% JL Drought Operations Plan

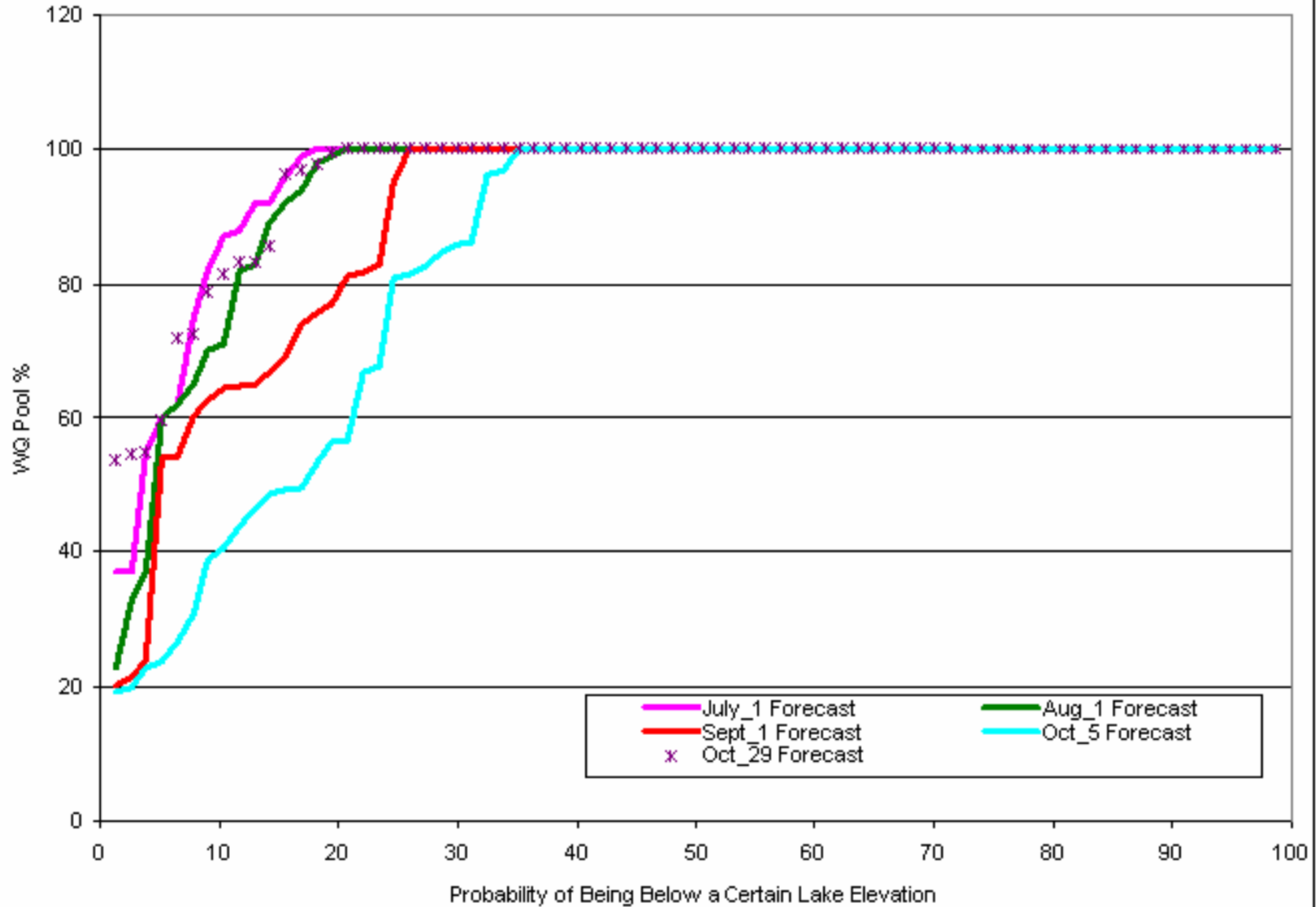


- Min — Median — Max — 80 — 60 — 40 — 20
- YELLOW (LOWER) BAND = 5- TO 10-PERCENTILE
- GREEN (MIDDLE) BAND = 25- TO 75-PERCENTILE
- ▲ BLUE (UPPER) BAND = 90- TO 95-PERCENTILE

OASIS Jordan Lake Elevation Jan 1 2008 Forecast



OASIS Jordan Lake WQ Pool Jan 1 2008 Forecast



October 19, 2007 Forecast

Date	Probability (%) of Being at or Below			
	JL Elev 211 ft	60% WQ Pool	40% WQ Pool	20% WQ Pool
1-Nov	76.6	94.8	83.1	> 1.3
15-Nov	64.9	88.3	71.4	> 1.3
1-Dec	46.8	66.2	53.2	9.1
15-Dec	27.3	42.9	35.1	6.5
1-Jan	11.7	25.4	16.9	5.2
15-Jan	7.8	11.5	9.1	2.4

October 29, 2007 Forecast

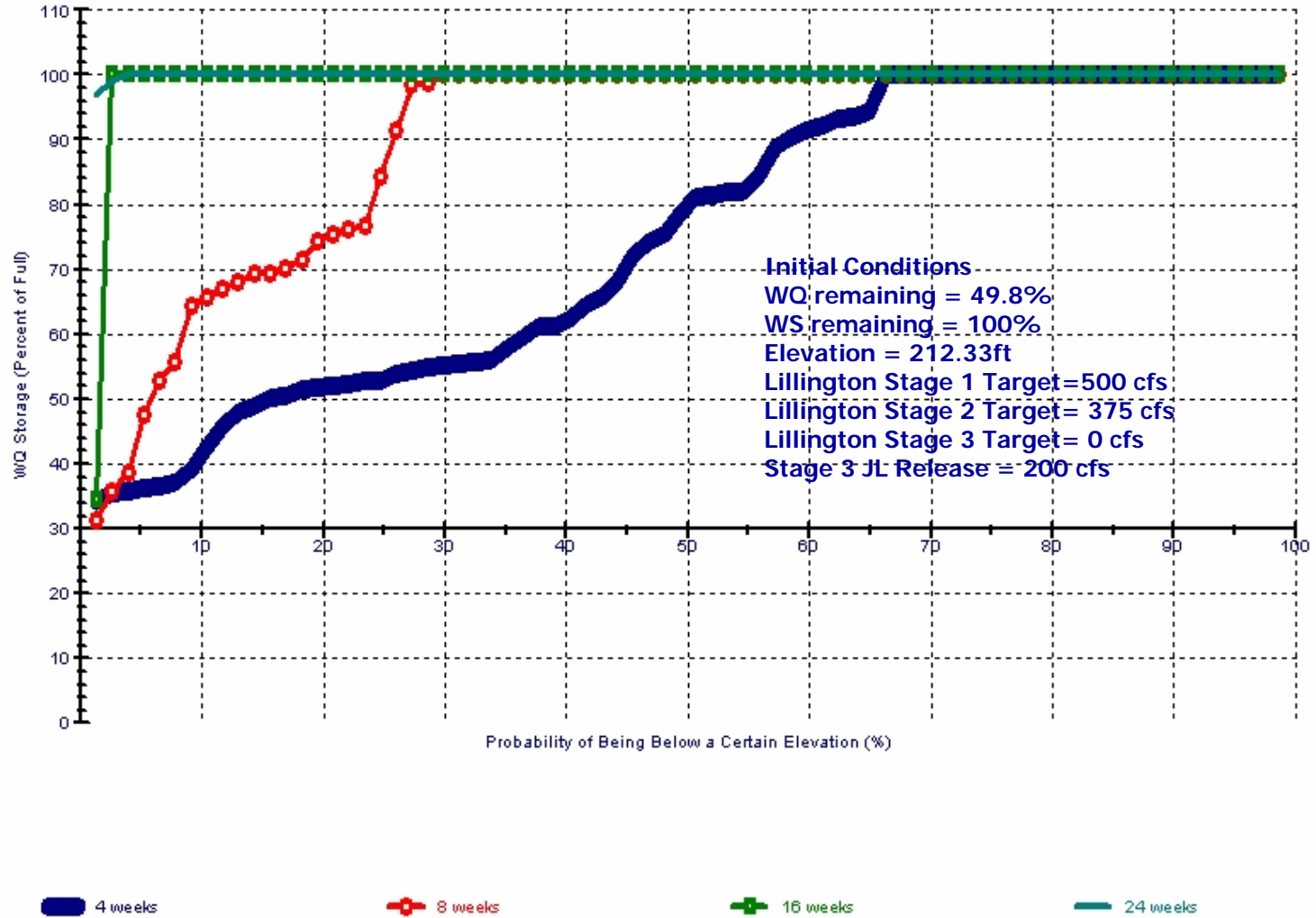
Date	Probability (%) of Being at or Below			
	JL Elev 211 ft	60% WQ Pool	40% WQ Pool	20% WQ Pool
15-Nov	< 1.3	49.4	2.6	< 1.3
1-Dec	1.3	26.0	3.9	< 1.3
15-Dec	2.6	7.8	< 1.3	< 1.3
1-Jan	2.6	6.5	< 1.3	< 1.3
15-Jan	1.3	2.6	< 1.3	< 1.3

October 29, 2007 Forecast

Date	Probability (%) of Being at or Below				
	JL Elev 208 ft	JL Elev 211 ft	60% WQ Pool	40% WQ Pool	20% WQ Pool
15-Nov	< 1.3	< 1.3	49.4	2.6	< 1.3
1-Dec	< 1.3	1.3	26.0	3.9	< 1.3
15-Dec	< 1.3	2.6	7.8	< 1.3	< 1.3
1-Jan	< 1.3	2.6	6.5	< 1.3	< 1.3
15-Jan	< 1.3	1.3	2.6	< 1.3	< 1.3

Jordan Lake WQ Storage in 4, 8, 16, and 24 Weeks

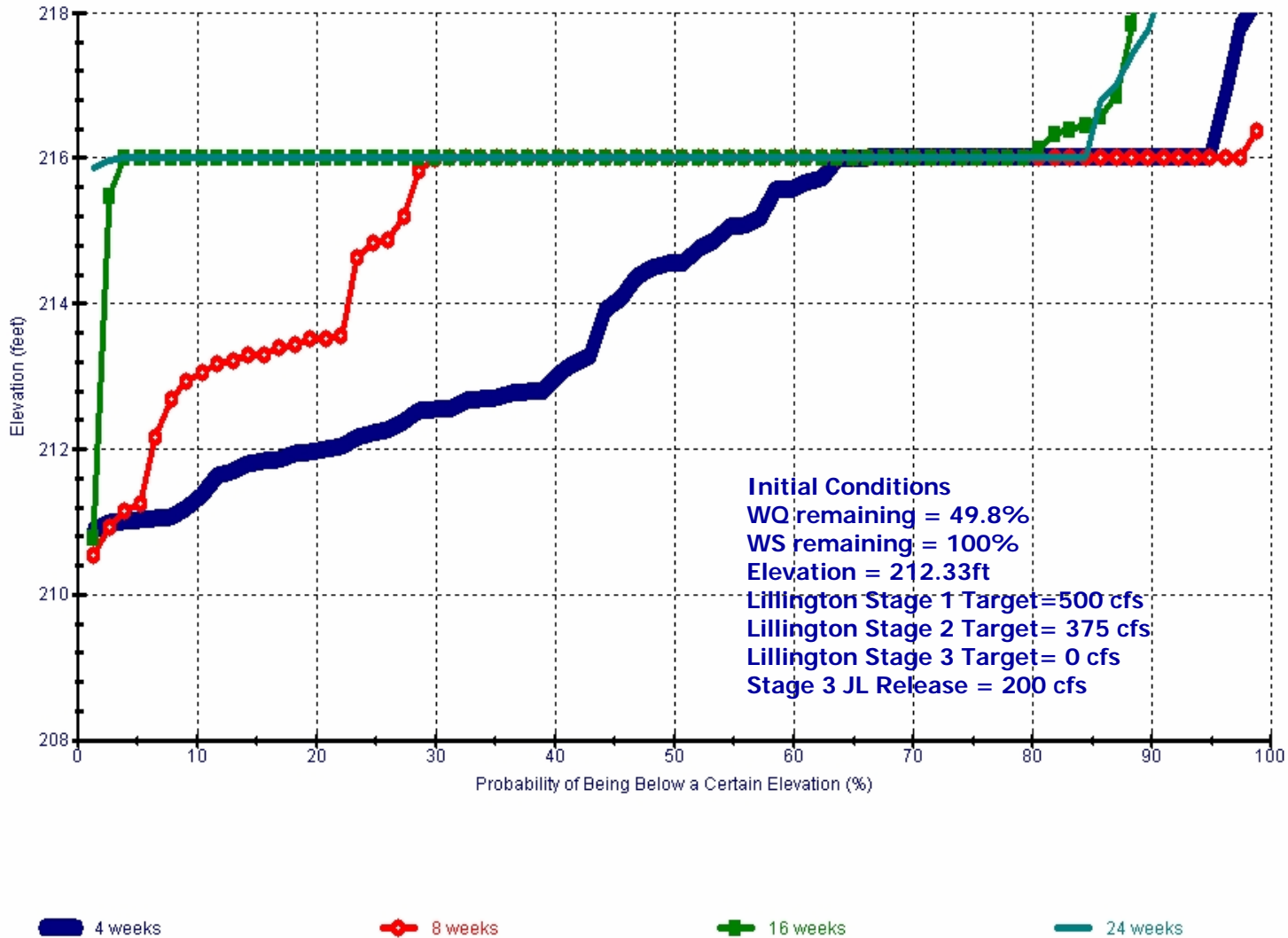
10_29_2007_cond_DP_WQ_WS



Jordan Lake Model – 10-29-2007 Forecast

Jordan Lake Elevation in 4, 8, 16, and 24 Weeks

10_29_2007_cond_DP_WQ_WS



Jordan Lake Model – 10-29-2007 Forecast