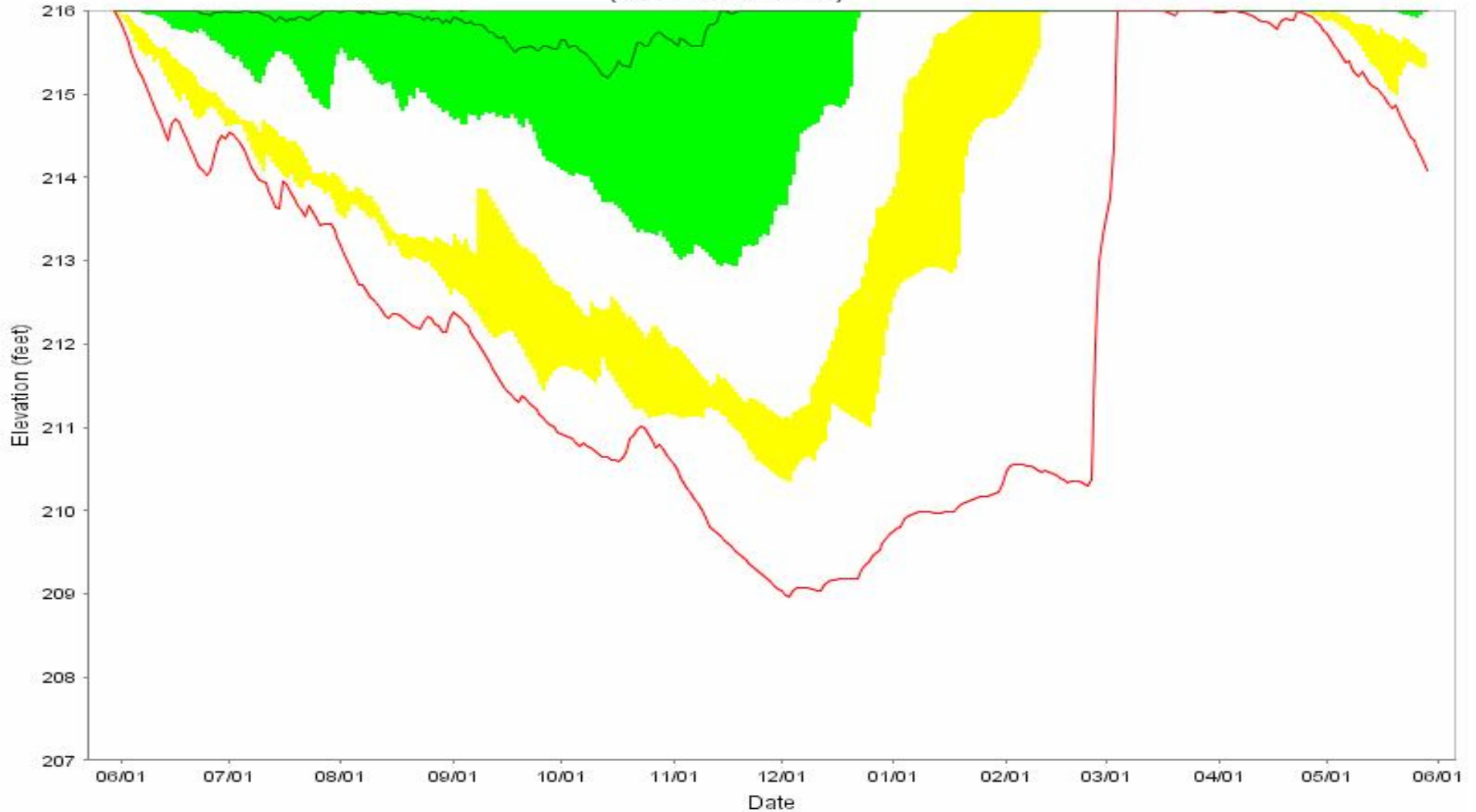


## Jordan Lake Elevation Forecast

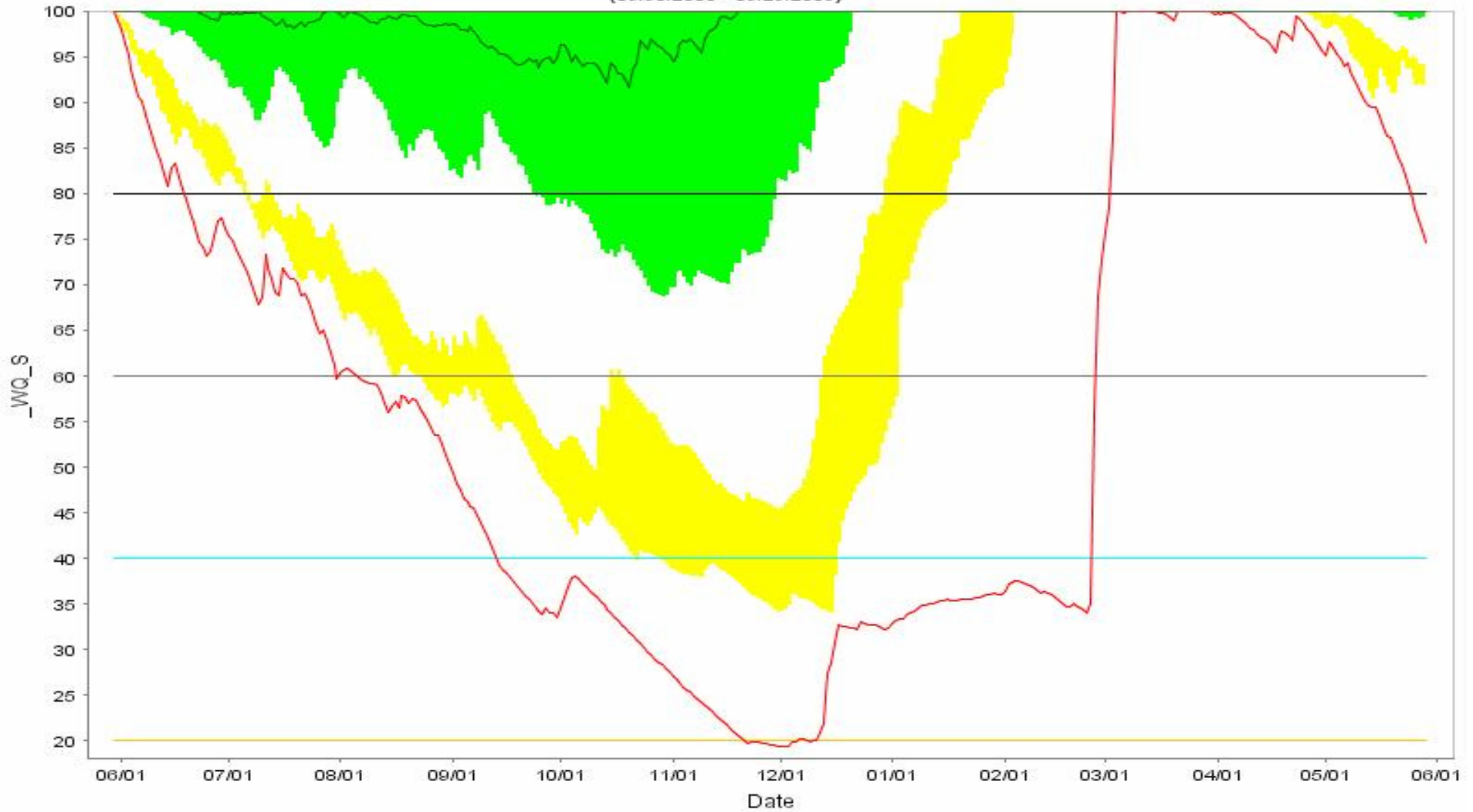
Initial WQ Remaining = 100% Initial WS Remaining = 100% JL Elev = 216.79 Lillington STG1=500ft Lillington STG2=375ft  
(05/30/2008 - 05/29/2009)



- Min — Median — Max — Actual Jordan Elevation
- YELLOW (LOWER) BAND = 5- TO 10-PERCENTILE
- GREEN (MIDDLE) BAND = 25- TO 75-PERCENTILE
- BLUE (UPPER) BAND = 90- TO 95-PERCENTILE

## Percent remaining in the water quality pool

Initial WQ Remaining = 100% Initial WS Remaining = 100% JL Elev = 216.79ft Lillington STG1 = 500ft Lillington STG2= 375ft  
(05/30/2008 - 05/29/2009)

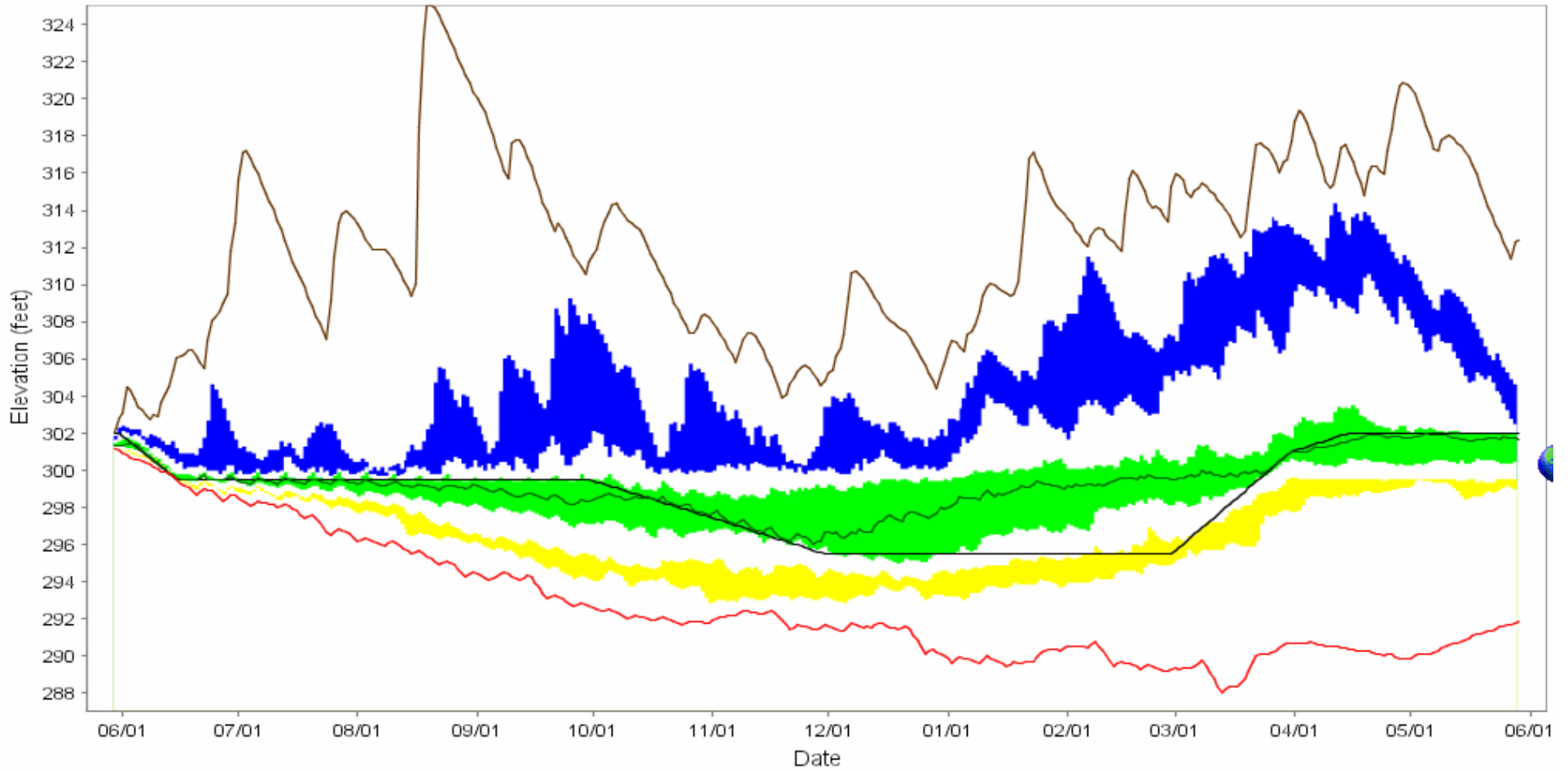


- Min — Median — Max — 80 — 60 — 40 — 20
- YELLOW (LOWER) BAND = 5- TO 10-PERCENTILE
- GREEN (MIDDLE) BAND = 25- TO 75-PERCENTILE
- ▲ BLUE (UPPER) BAND = 90- TO 95-PERCENTILE

	<b>Probability (%) of Being Below</b>					
	<b>JL Elev 211 ft</b>	<b>Water Quality Pool</b>				
		<b>100%</b>	<b>80%</b>	<b>60%</b>	<b>40%</b>	<b>20%</b>
<b>15-Jun</b>	<1.3	42.9	<1.3	<1.3	<1.3	<1.3
<b>1-Jul</b>	<1.3	50.6	3.9	<1.3	<1.3	<1.3
<b>15-Jul</b>	<1.3	54.5	11.7	<1.3	<1.3	<1.3
<b>1-Aug</b>	<1.3	53.2	15.6	<1.3	<1.3	<1.3
<b>15-Aug</b>	<1.3	55.8	20.8	5.2	<1.3	<1.3
<b>1-Sep</b>	<1.3	64.9	19.5	6.5	<1.3	<1.3
<b>15-Sep</b>	<1.3	62.3	18.2	7.8	2.6	<1.3
<b>1-Oct</b>	<1.3	67.5	26.0	11.7	2.6	<1.3
<b>15-Oct</b>	<1.3	63.6	37.7	9.1	2.6	<1.3

# Kerr Lake Elevation Forecast

(05/30/2008 - 05/29/2009)



- Min — Median — Max — Guide Curve
- ▼ YELLOW (LOWER) BAND = 5- TO 10-PERCENTILE
- ▶ GREEN (MIDDLE) BAND = 25- TO 75-PERCENTILE
- ▶ BLUE (UPPER) BAND = 90- TO 95-PERCENTILE

	<b>Probability of Being Below</b>		
	<b>JHK Elev 295 ft</b>	<b>JHK Elev 300ft</b>	<b>JHK Elev 305ft</b>
<b>15-Jun</b>	<1.3	85.9	97.4
<b>1-Jul</b>	<1.3	89.7	94.9
<b>15-Jul</b>	<1.3	88.5	96.2
<b>1-Aug</b>	<1.3	93.6	97.4
<b>15-Aug</b>	<1.3	89.7	97.4
<b>1-Sep</b>	2.6	88.5	96.2
<b>15-Sep</b>	2.6	89.7	94.9
<b>1-Oct</b>	7.7	84.6	93.6
<b>15-Oct</b>	14.1	87.2	96.2