

*RR*

**Water Resources Director**  
 Environmental Division Director  
 Rogers, Richard  
 60031496, NC25

**Deputy Director**  
 Environ. Program Manager II  
 Gryzb, Julie  
 60034552, NC24

**Deputy Director**  
 Environ. Program Manager II  
 Michael Pjetraj  
 60035258, NC24

**Budget Director I**  
 Beth Roberts  
 60035125, NC21

**Administrative Specialist II**  
 Chappell, Paula  
 65024021, NC09

**Env Program Consultant**  
 Davis, Amin  
 60031502, NC18

**Business Officer I**  
 Vacant  
 65034271, NC14

**Administrative Specialist II**  
 Thomas, Lois  
 60035097, NC09

**Env Program Consultant**  
 Hart, Kevin  
 60031531, NC18

**Administrative Specialist I**  
 Dorrin, Meagen  
 60035108, NC08

**Administrative Officer I**  
 Caroline Baker  
 60035561, NC11

**Business Officer II**  
 Aziza Selkane  
 60035218, NC17

**Business Officer II**  
 Bullock, Katherine (Kathy)  
 60034383, NC17

**Public Information Office**  
 Info & Comm Spec III  
 Anna Gurney

**Human Resources**  
 HR Manager  
 Mike Peele

**Procurement Technician**  
 Revis, Teresa  
 60031497, NC05

**Public Information Office**  
 Info & Comm Spec III  
 Josh Kastrinsky

**HR Technician I**  
 Zachary Ford

**Accounting Clerk II**  
 Williams, Kendall  
 60035103, NC03

**Applications Systems**  
 Manager I  
 Sparks, Kim

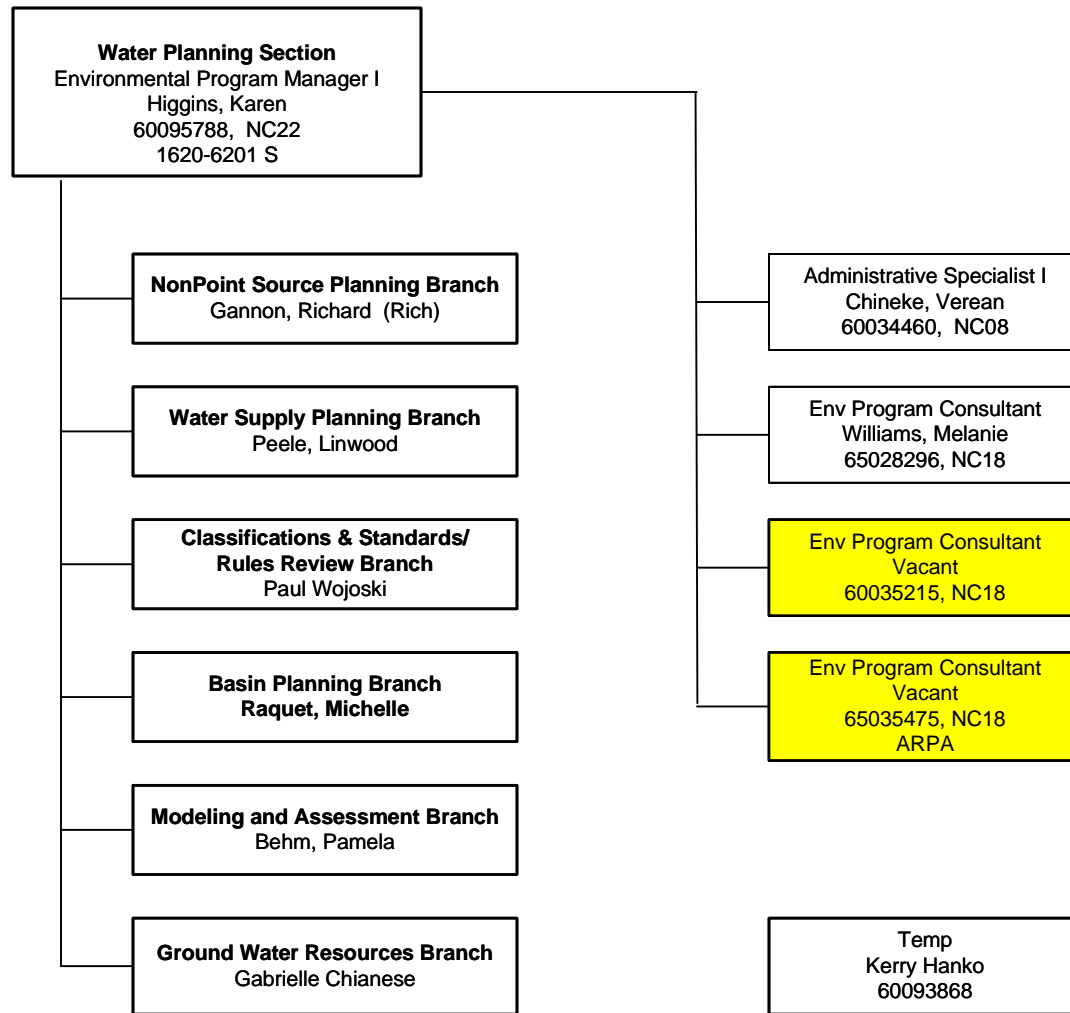
**HR Technician III**  
 Evans, Ruth

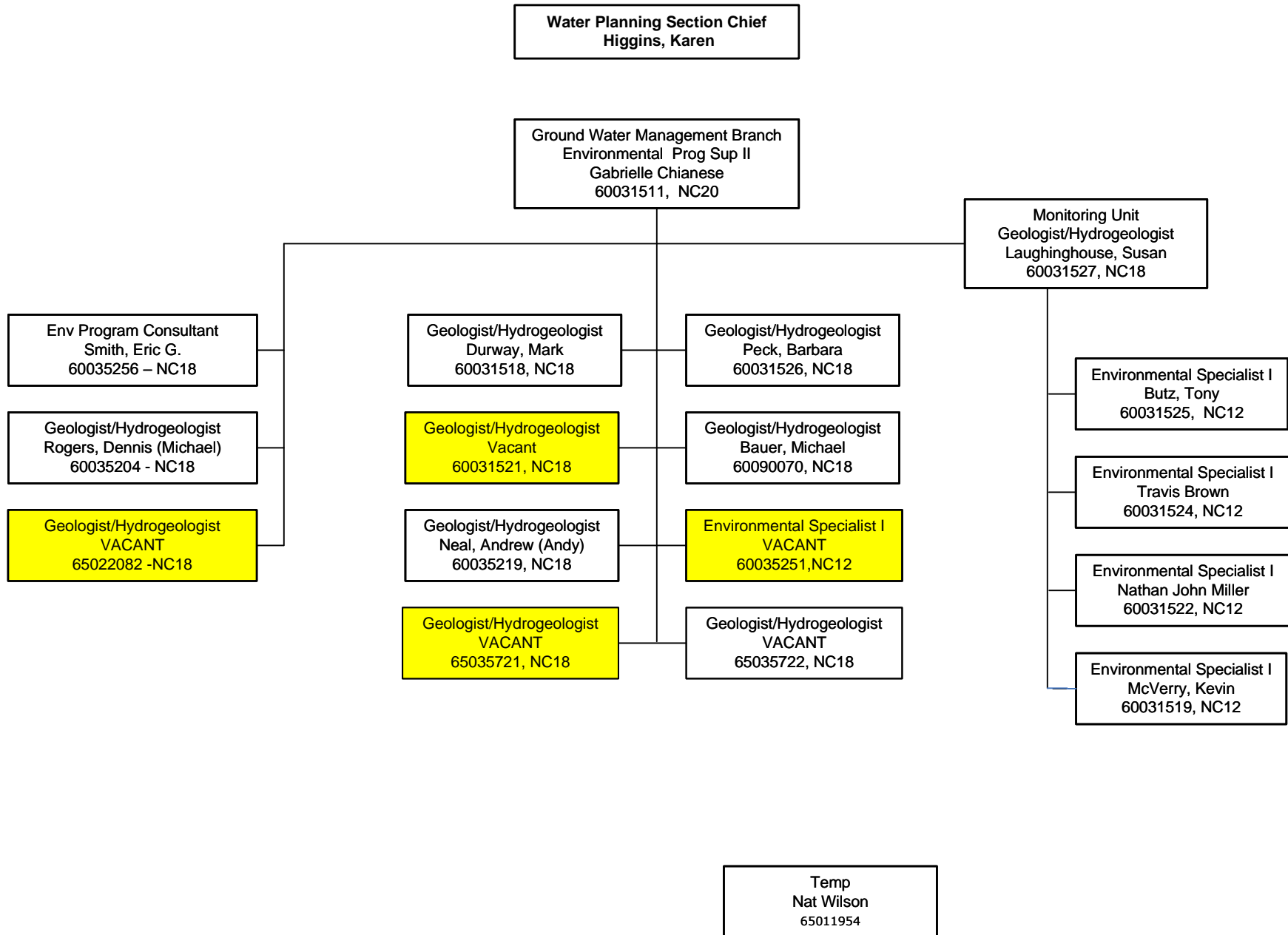
**Accounting Clerk II**  
 Bohringer, Jerome  
 60035104, NC03

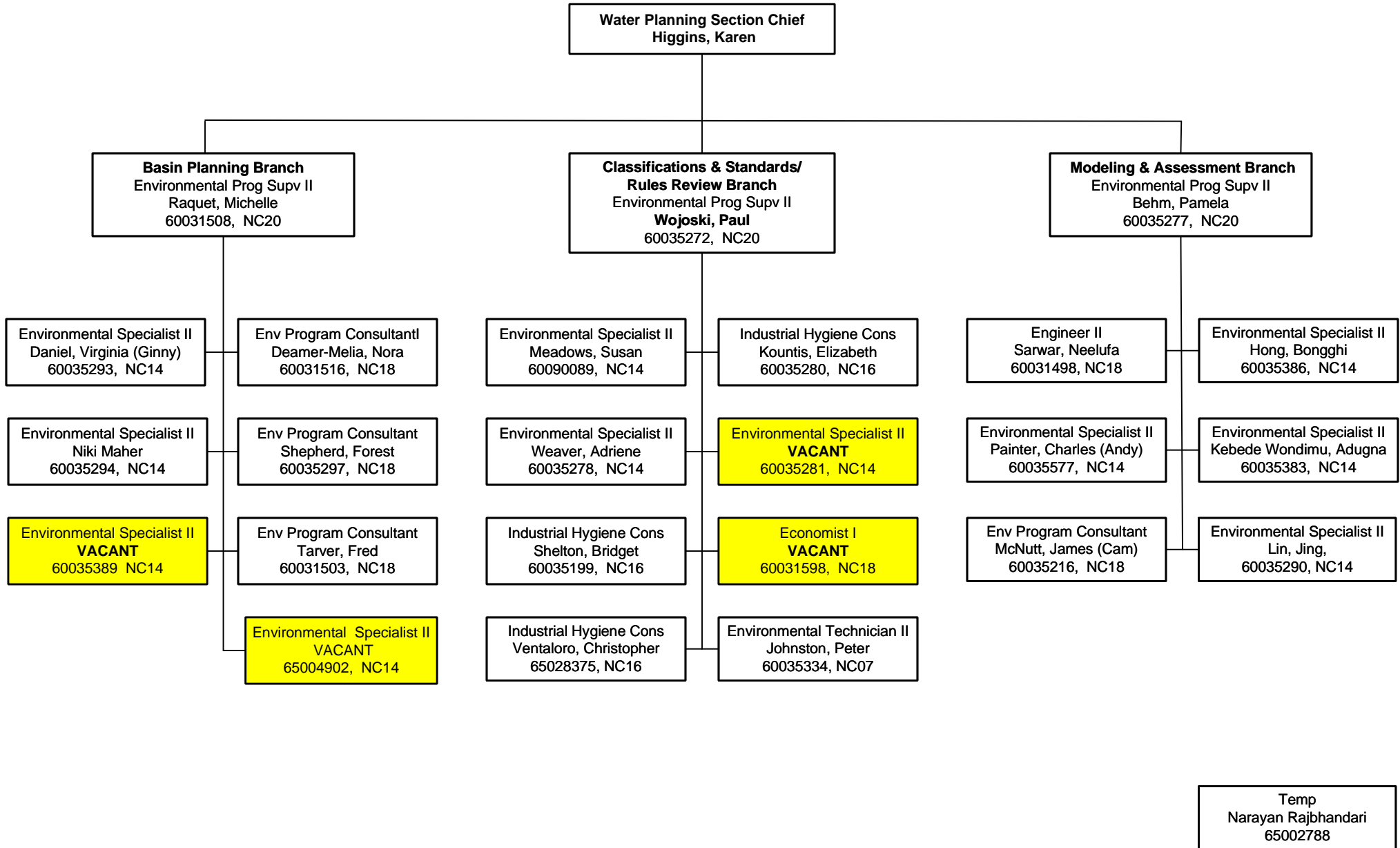
**HR Technician III**  
 Tammy Cherry

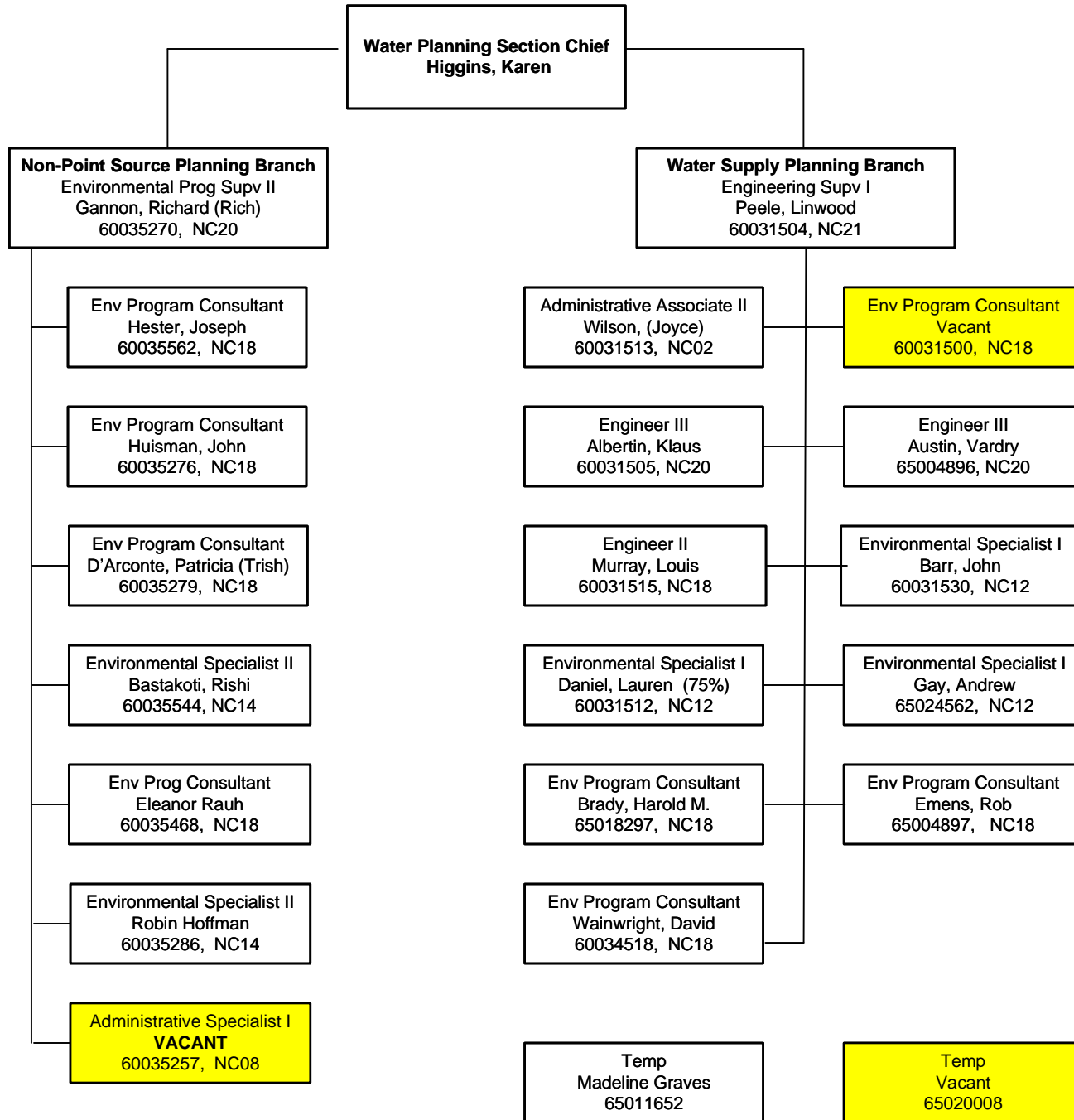
Temp

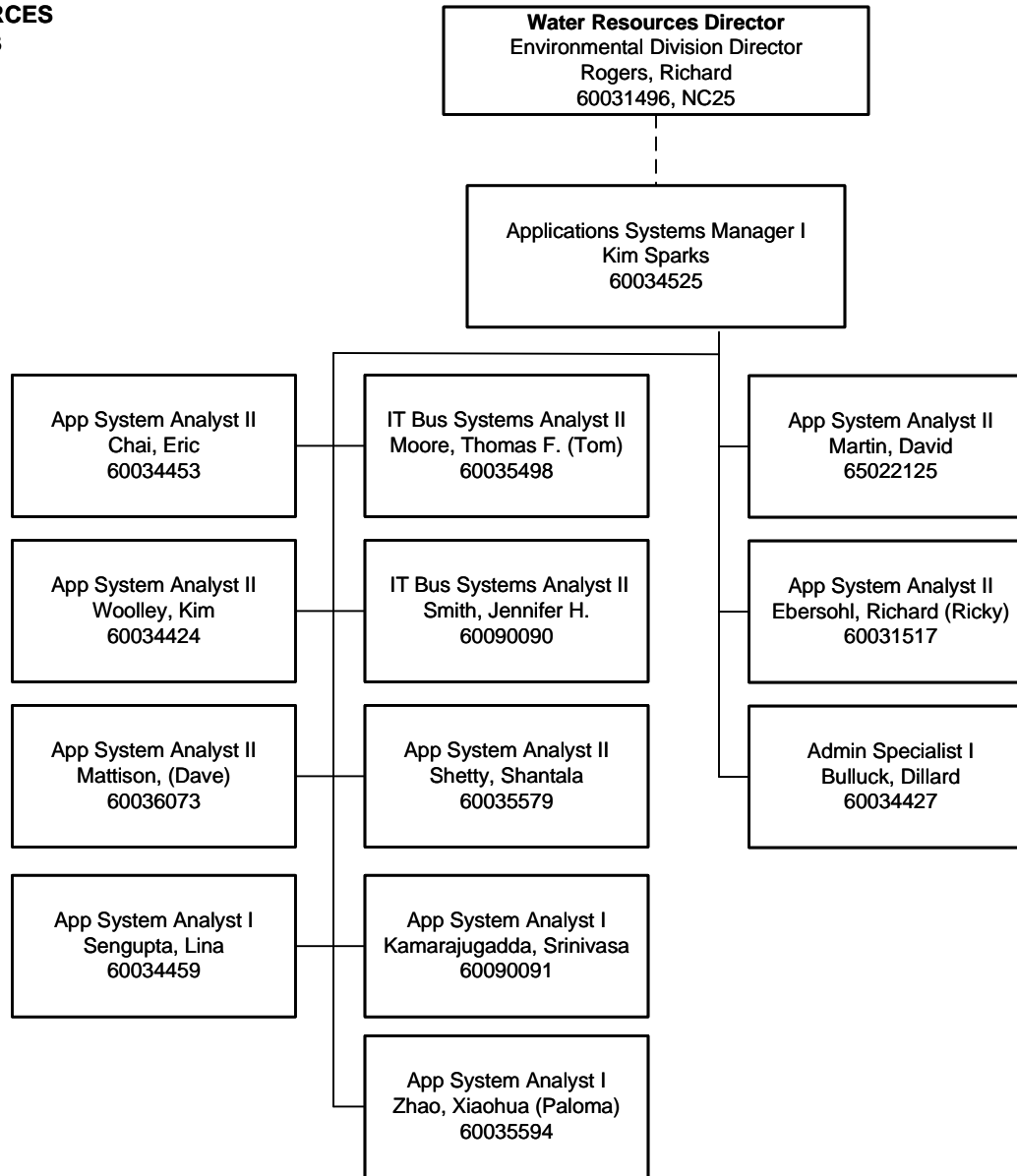
Temp

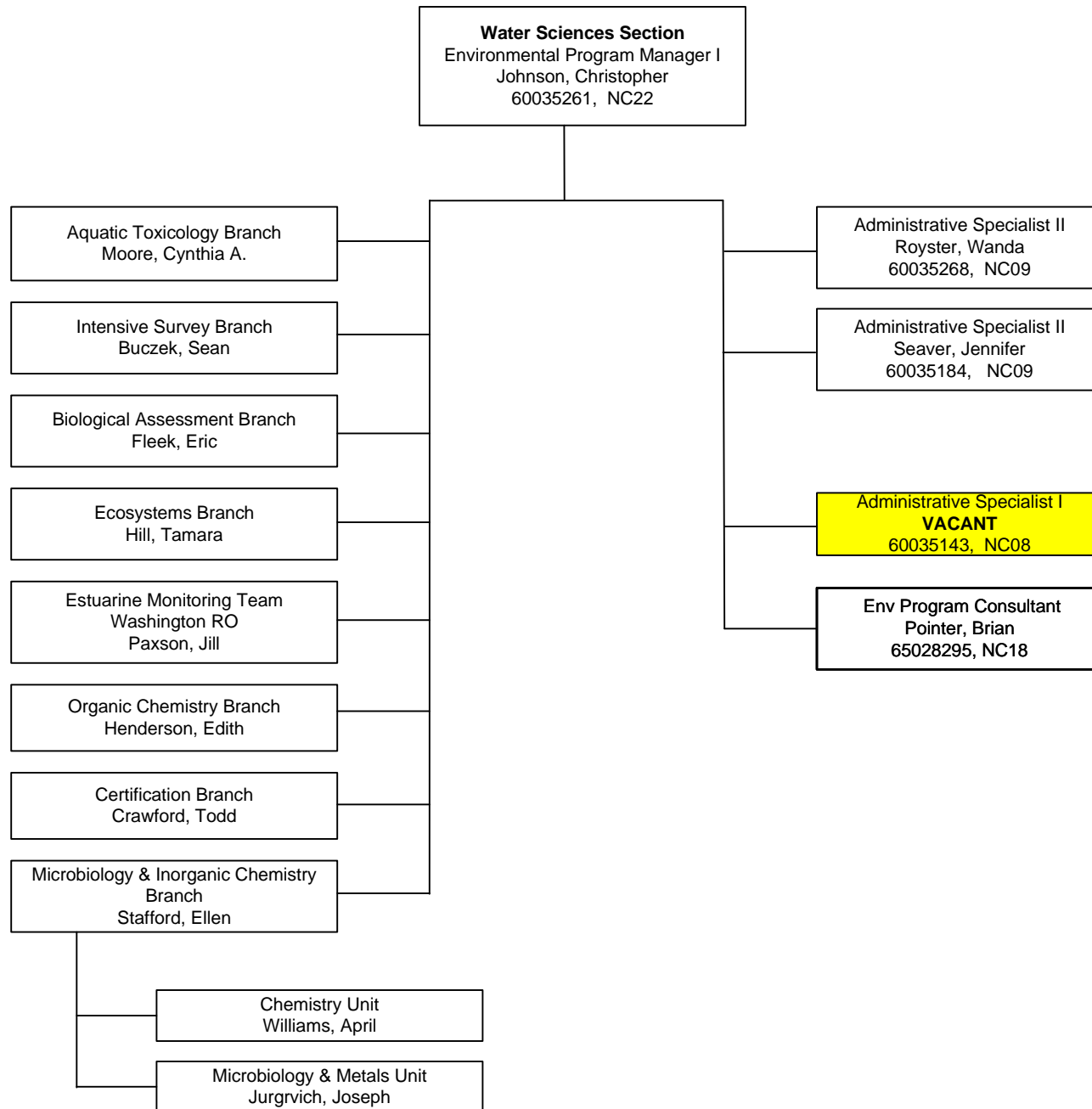




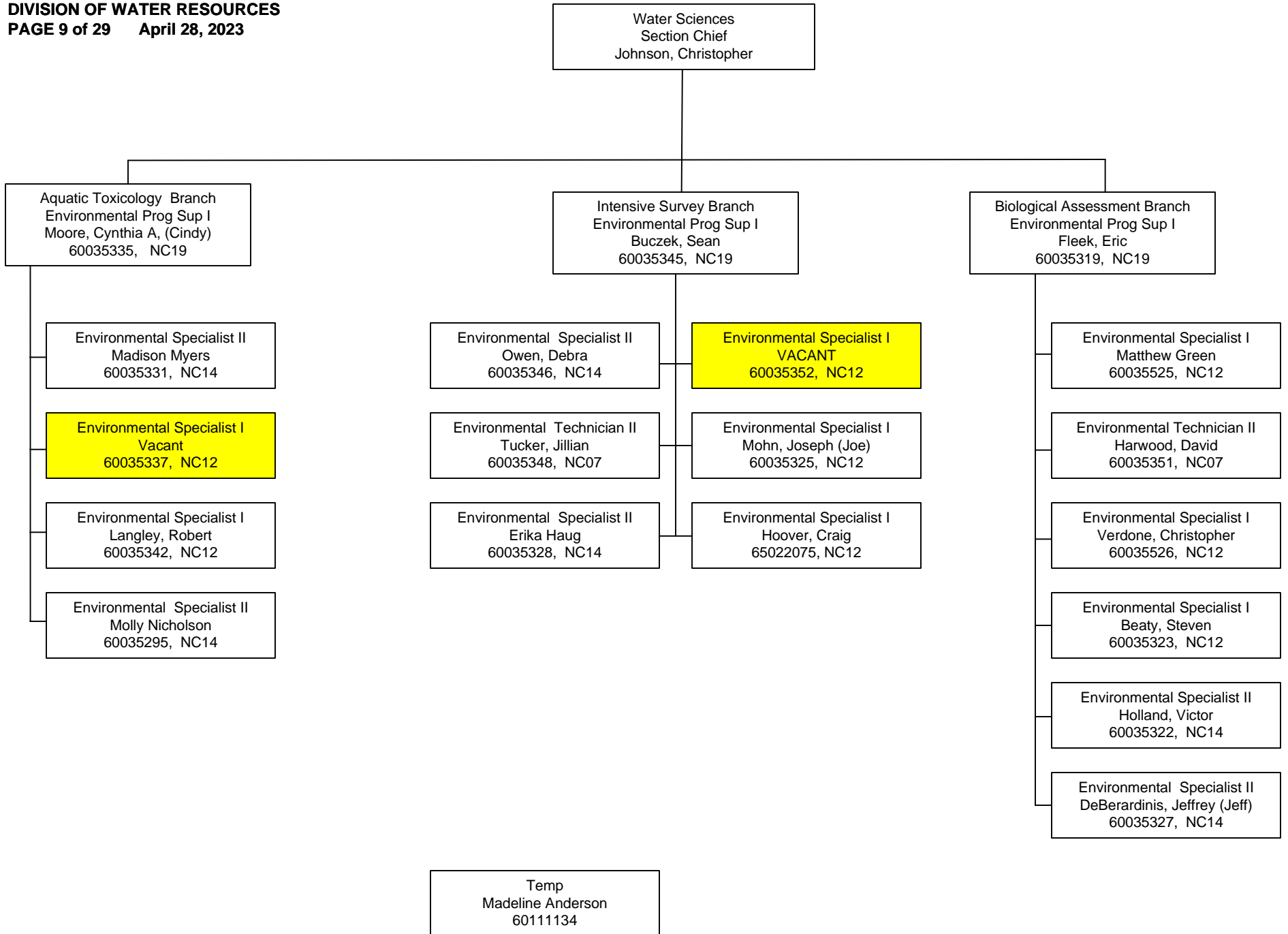


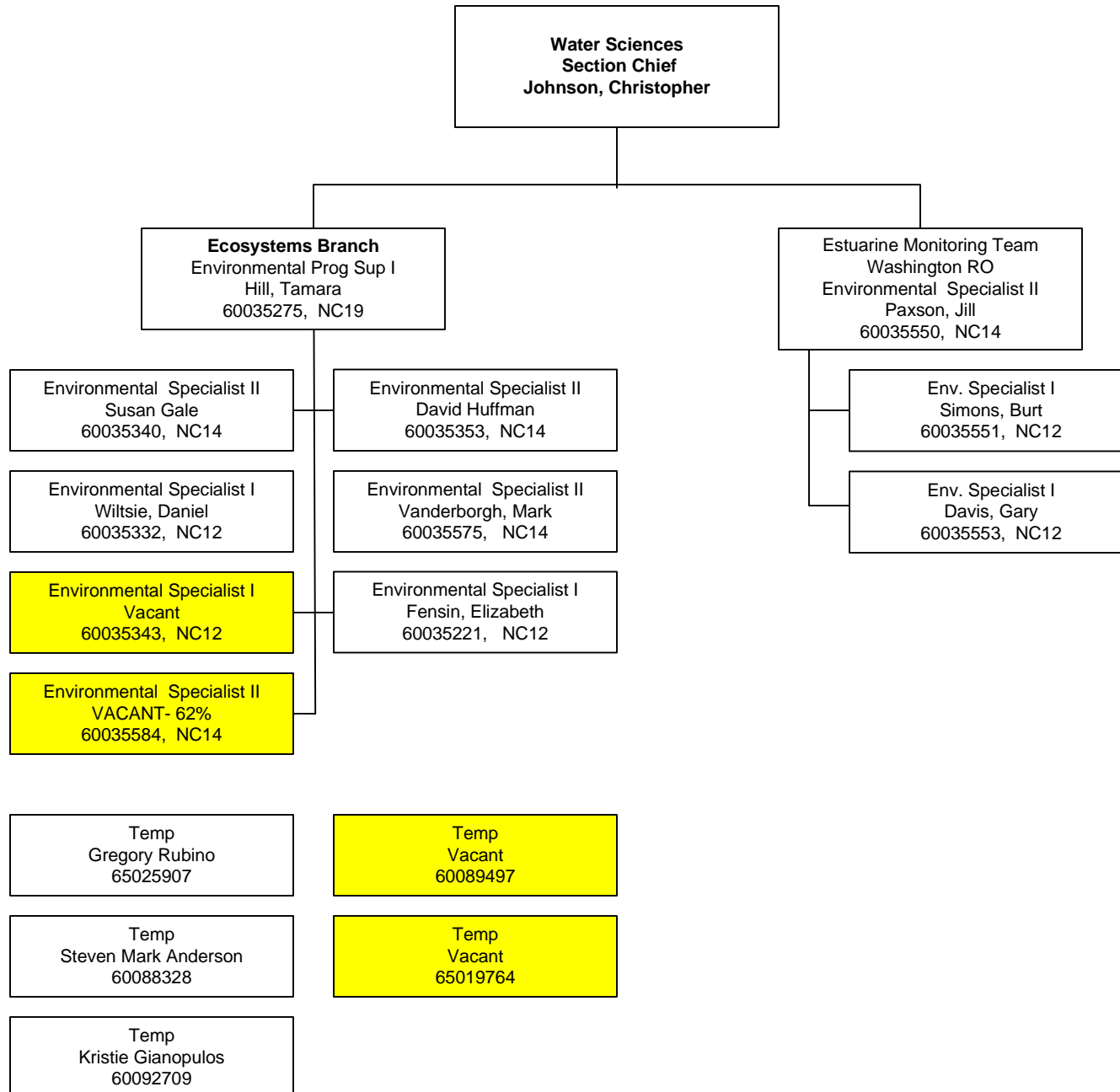


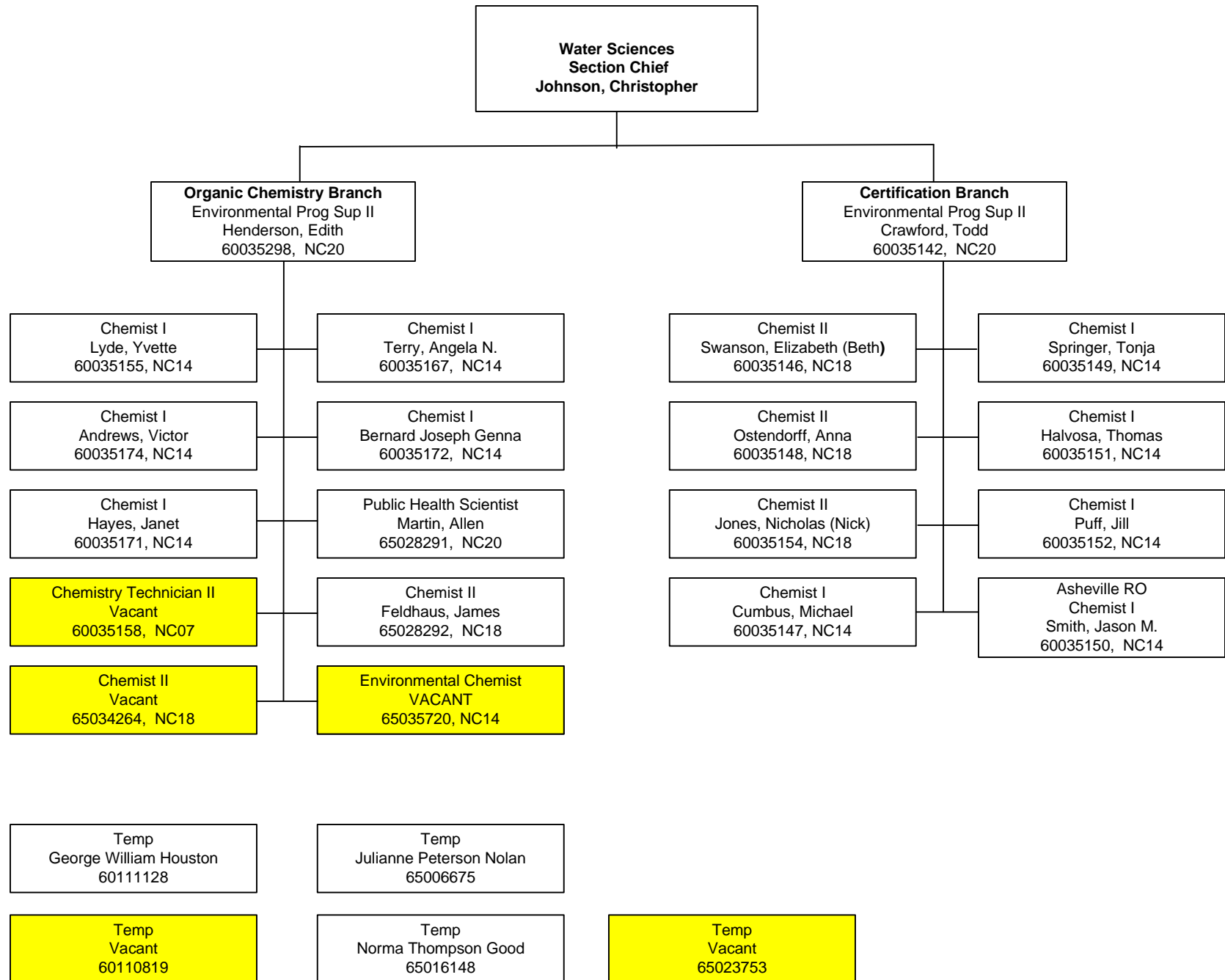


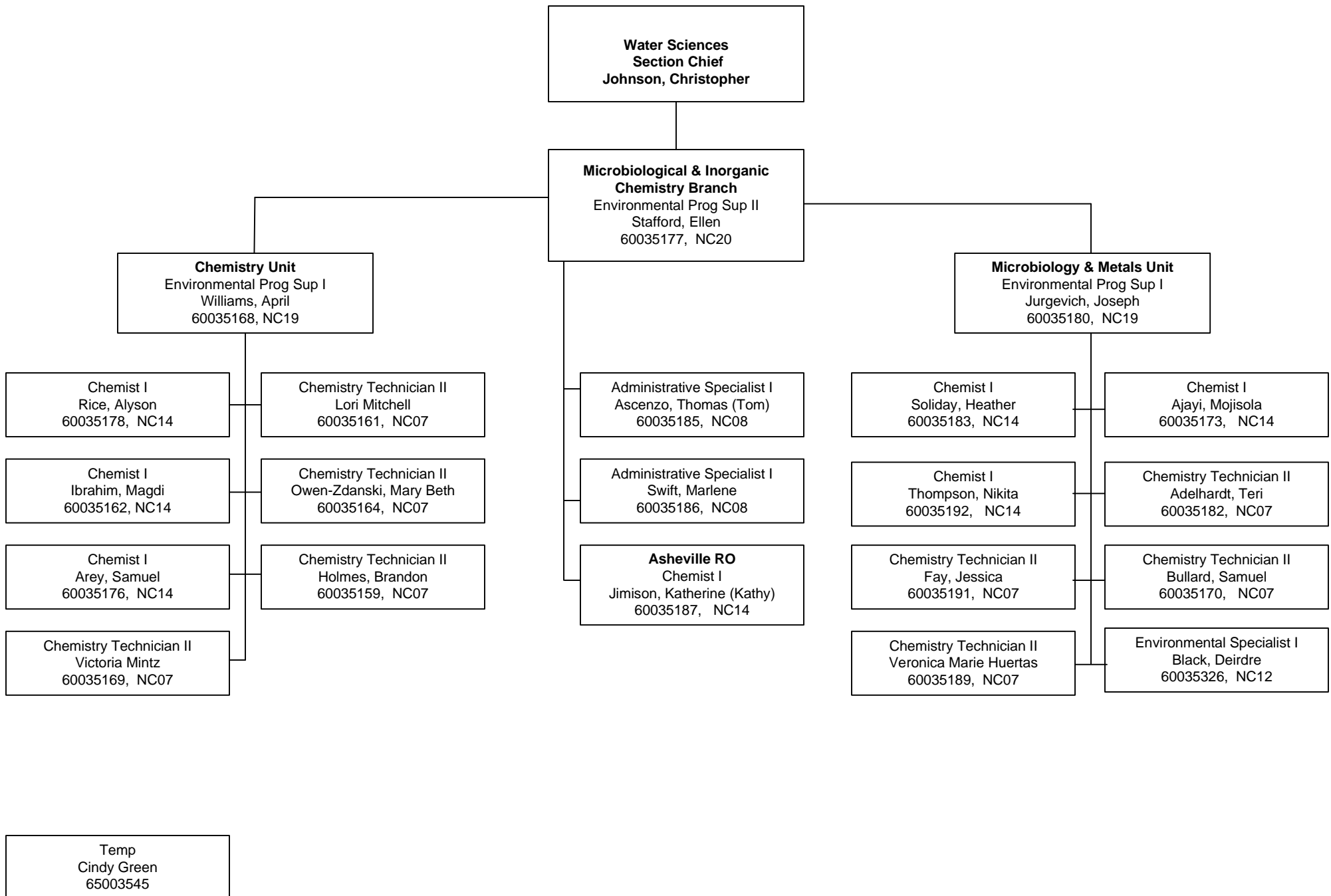






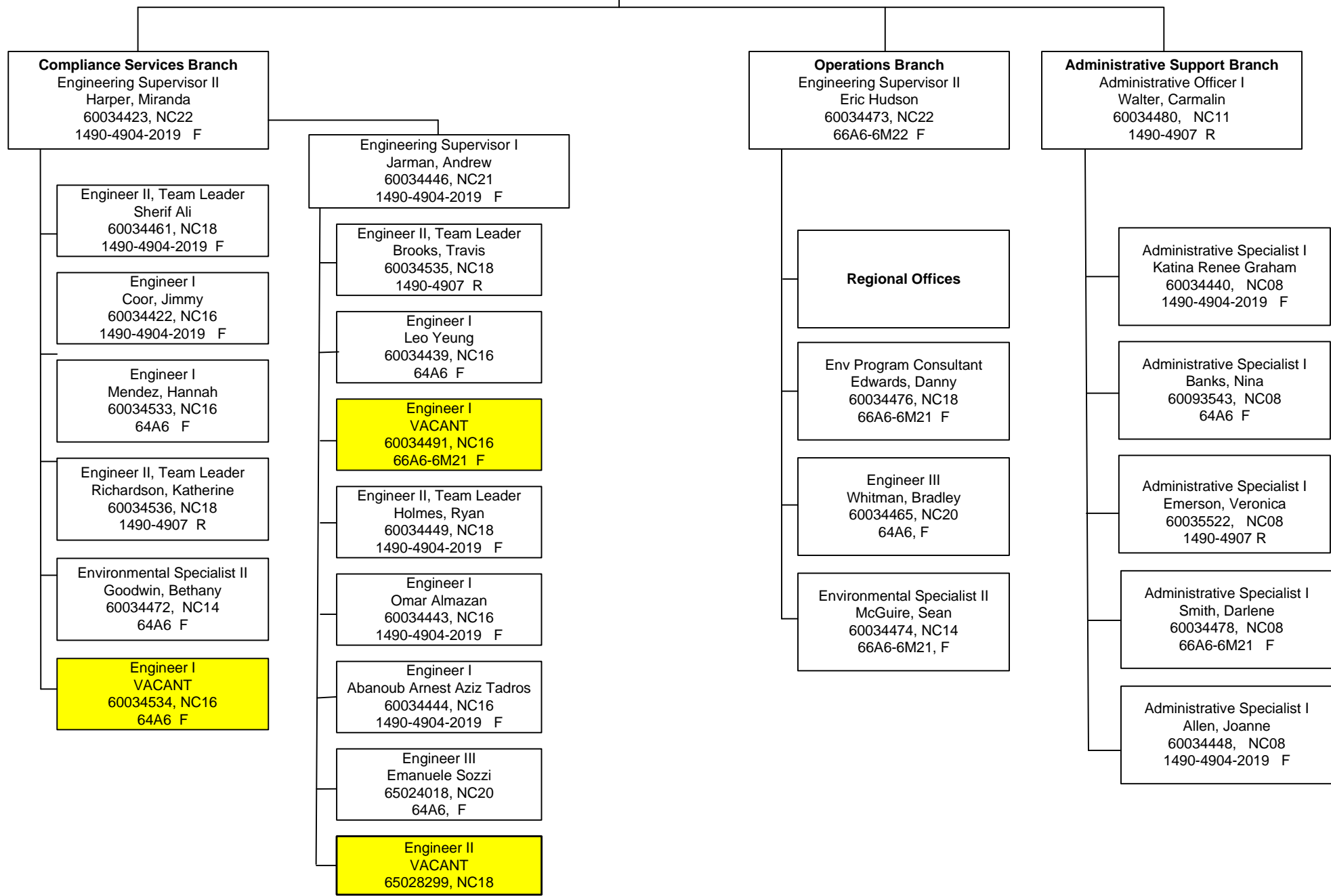


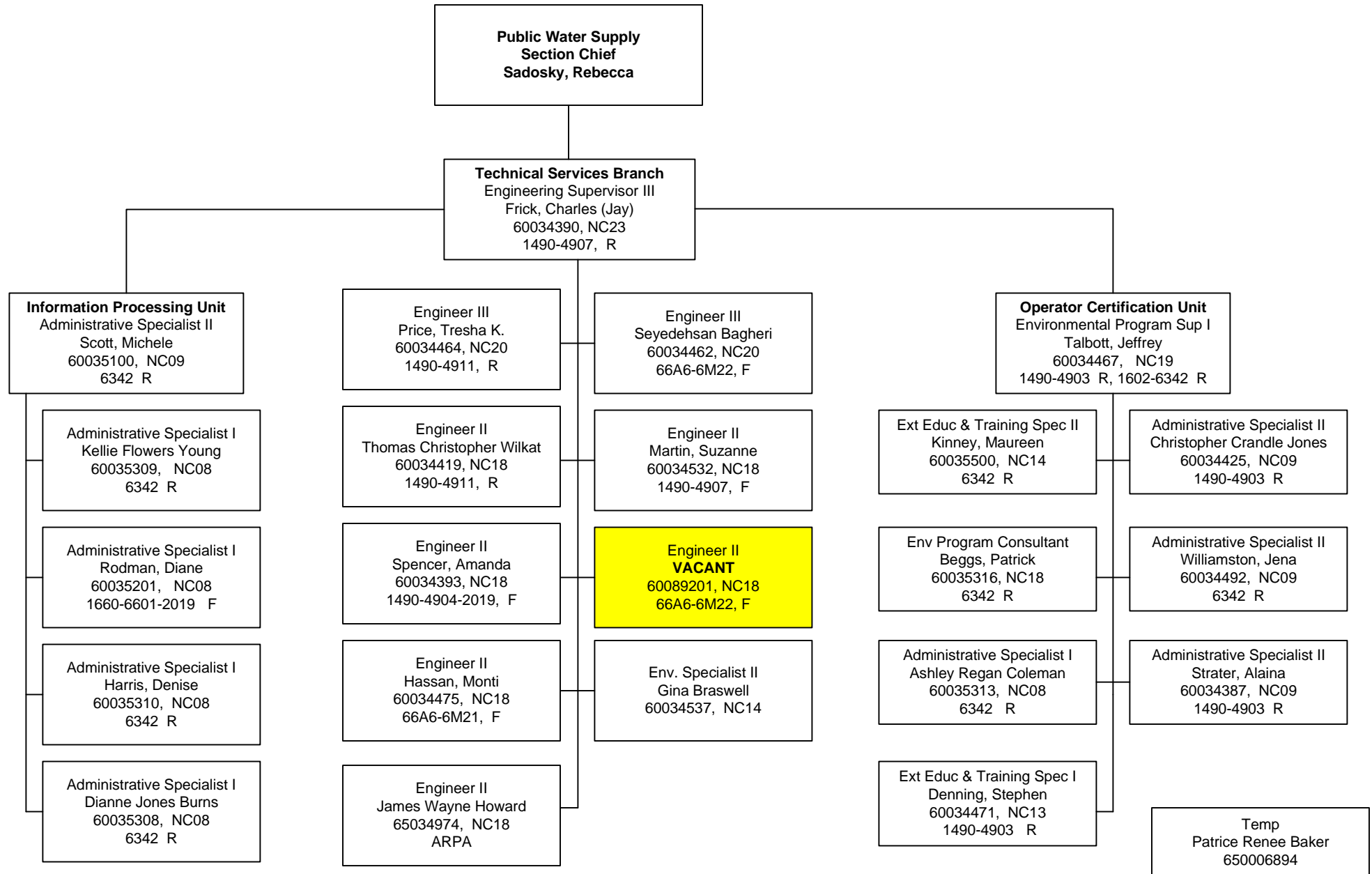




**Public Water Supply Section Chief**  
 Engineering Manager I  
 Sadosky, Rebecca  
 60034385, NC24  
 1490-4904-2019 F

**Administrative Specialist II**  
 Peck, Karen Pochala  
 60034386, NC09  
 1490-4907 R





Public Water Supply Engineering Sup  
Eric Hudson

Asheville RO  
Engineering Supervisor I  
Barnett, Kimberly  
60034407, NC21  
1490-4907 R

Fayetteville /  
Wilmington RO  
Engineering Supervisor I  
Cox, Heidi  
60034401, NC21  
66A6-6M22 F

Engineer II  
Kohn, Joel  
60034430, NC18  
1490-4904-2019 F

Engineer I  
Nevis, Matison  
60034538, NC16  
1490-4907 R

Engineer II  
Larch, John  
60034411, NC18  
66A6-6M22 F

Engineer I  
Press, Jeannine  
60091016, NC16  
64A6 F

Engineer II  
Guglielmi, Meredith  
60034454, NC18  
66A6-6M22 F

Environmental Specialist II  
Hairston, Cynthia (Nicole)  
60034412, NC14  
66A6-6M22 F

Engineer I  
**VACANT**  
60034433, NC16  
1490-4904-2019 F

Environmental Specialist I  
Vacant  
60034488, NC12  
66A6-6M22 F

Engineer II  
Holloway, Jennifer  
60034428, NC18  
1490-4904-2019 F

Environmental Specialist I  
Emory, James  
60034396, NC12  
66A6-6M22 F

Environmental Specialist II  
Overby, Tommy  
60034402, NC14  
64A6 F

Engineer II  
Brown, Mark  
60034409, NC18  
1490-4904-2019 F

Engineer I  
Watson, Molly  
60034429, NC16  
1490-4902 S

Environmental Specialist I  
Matthew Connor Leddy  
60034455, NC12  
66A6-6M22 F

Environmental Specialist I  
Morrison, Brian  
60034481, NC12  
66A6-6M22 F

Engineer II  
Pack, Joshua  
60034437, NC18  
1490-4904-2019 F

Engineer I  
**VACANT**  
60034451, NC16  
1490-4904-2019 F

**Public Water Supply Engineering Sup**  
 Eric Hudson

**Mooreville RO**  
 Engineering Supervisor I  
 Cook, Clinton  
 60034394, NC21  
 66A6-6M22 F

**Raleigh RO**  
 Engineering Supervisor I  
 Guyer, Shawn  
 60034408, NC21  
 1490-4904-2019 F

Engineer II  
 Whitner, Raymond  
 60034438, NC18  
 1490-4904-2019 F

Geologist/Hydrogeologist  
 Parris, Bruce  
 60034397, NC18  
 66A6-6M21 F

Engineer II  
 Vacant  
 60034435, NC18  
 1490-4904-2019 F

Engineer I  
 Chertock, Boris  
 60091014, NC16  
 1490-4907 R

Engineer II  
 Westmoreland, Jeffrey (Jeff)  
 60034468, NC18  
 1490-4904-2019 F

Environmental Specialist II  
 Hahn, Mark  
 60034395, NC14  
 1490-4904-2019 F

Engineer II  
 Joel Martinez Torres  
 60034434, NC18  
 1490-4904-2019 F

Engineer I  
 Vacant  
 60034485, NC16  
 66A6-6M22 F

Engineer I  
 Mills, Janet  
 60034442, NC16  
 1490-4907 R

Environmental Specialist I  
 Anna Noel Floyd  
 60034483, NC12  
 65A6 F

Engineer I  
**VACANT**  
 60034410, NC16  
 1490-4907 R

Engineer II  
 Lester, Emily  
 60034482, NC14  
 1490-4903 R

Engineer I  
 Thomas Samuel Poozhikala  
 60091012, NC16  
 1490-4907 R

Environmental Specialist I  
 Johnson, Weston  
 60034484, NC12  
 66A6-6M21 F

Engineer I  
 Melody Ying Markert  
 60034452, NC16  
 1490-4904-2019 F

Environmental Specialist I  
 Bright, Gregory (Greg)  
 60034403, NC12  
 66A6-6M21 F

Engineer I  
**VACANT**  
 60091015, NC16  
 1490-4907 R

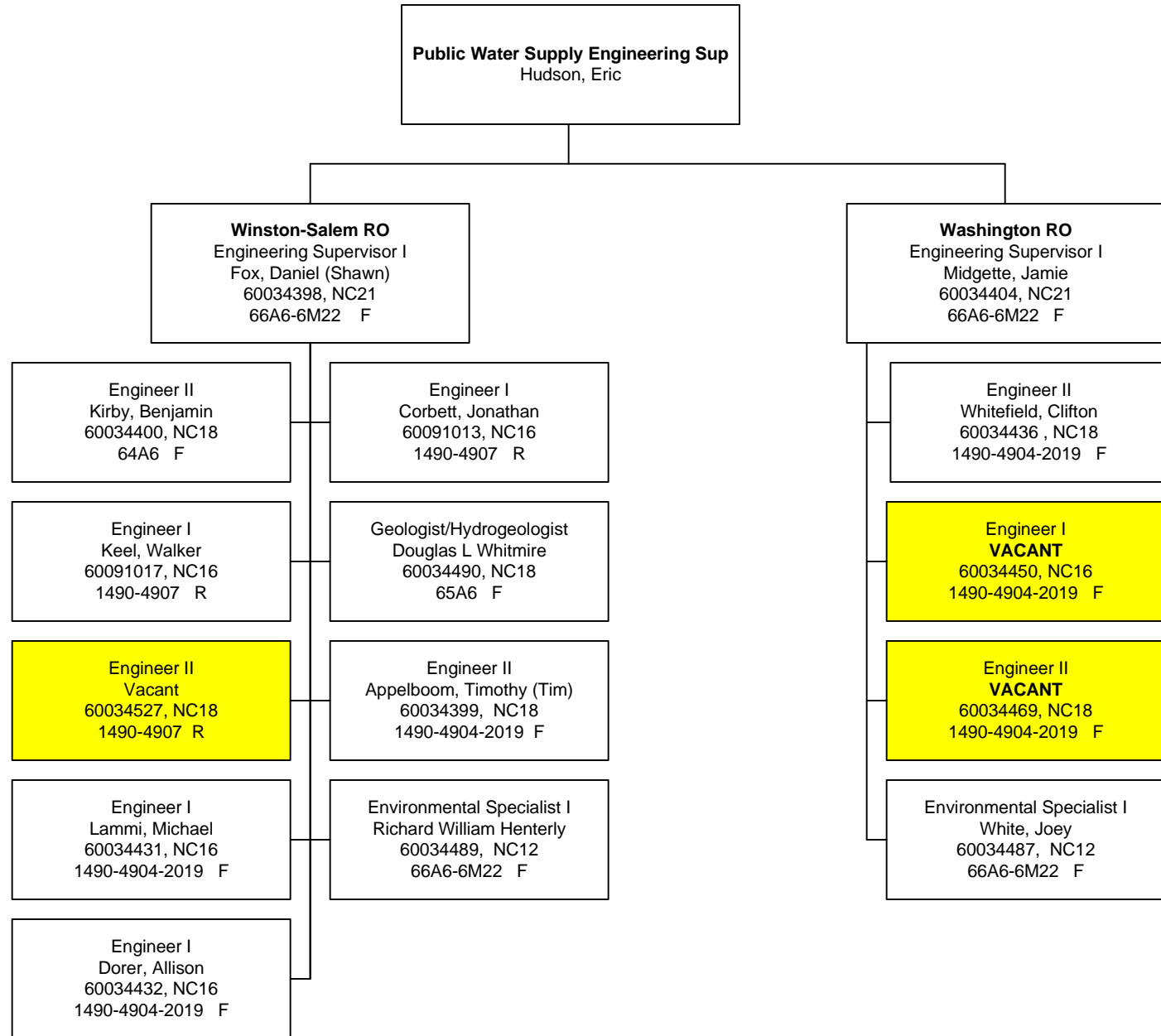
Engineer I  
 Pearce, William  
 60034529, NC16  
 66AM-6M21 F

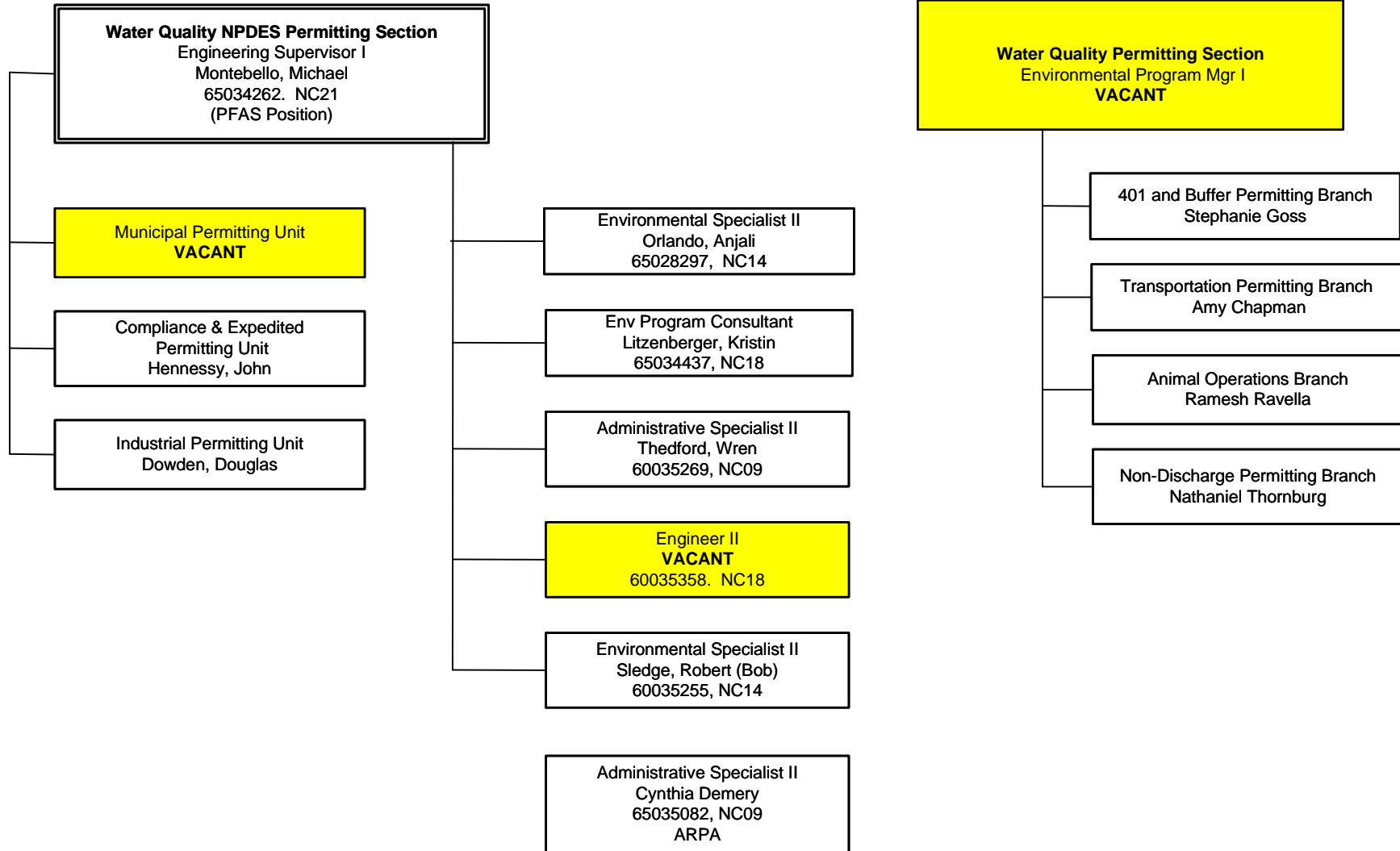
Environmental Specialist I  
 Miller Tara  
 60034486, NC12  
 65A6 F

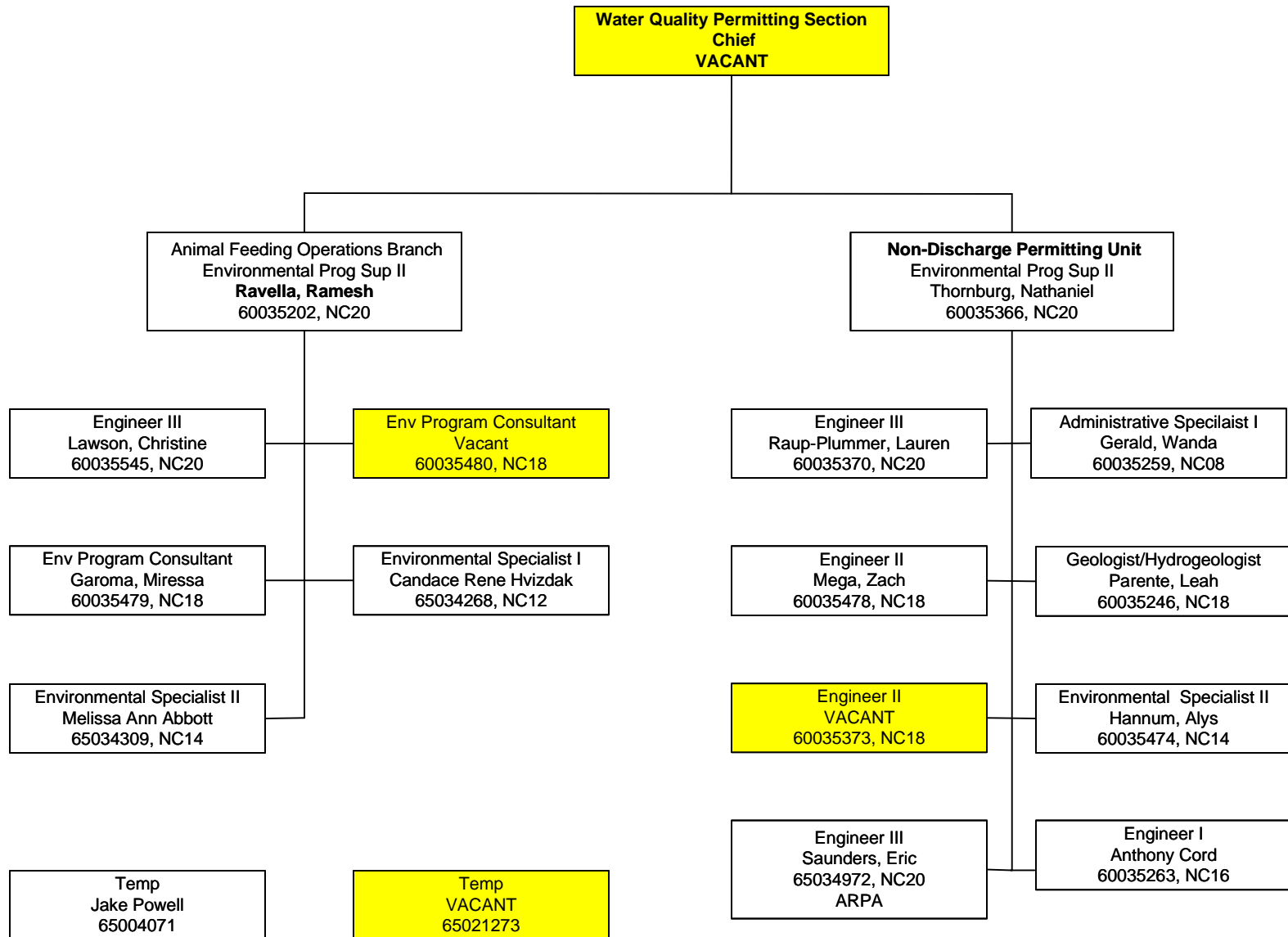
Temp  
 Vacant  
 60091875

Temp  
 William Hardy  
 65005304









**Water Quality Permitting Section  
 Chief  
 VACANT**

**401 and Buffer Permitting Branch**  
 Environmental Prog Supv II  
 Stephanie Goss  
 60035299, NC20

**Transportation Permitting Branch**  
 Environmental Prog Supv II  
 Chapman, Amy  
 60035554, NC20  
 1705-7052 R

Engineer III  
 McDaniel, Chonticha  
 60035371, NC20

Env Program Consultant  
 Vacant  
 60035505, NC18

Environmental Specialist II  
 Sullivan, Shelton  
 60035535, NC14

Environmental Specialist I  
 Vacant  
 60035476, NC12

Environmental Specialist II  
 Vacant  
 60035296, NC14

Administrative Specialist I  
 Montalvo, Sheri  
 60035536, NC08

Env Program Consultant  
 Katie Merritt  
 65034435, NC18

Environmental Program  
 Consultant  
 Susan Homewood  
 65034971, NC14  
 ARPA

Environmental Program  
 Consultant  
 Blake Hartshorn  
 65035081, NC14  
 ARPA

401 - Temp  
 Dale Haupt  
 60111135

Administrative Associate II  
**VACANT**  
 60035542, NC02  
 1705-7052 R

Engineer III  
 Locklear, Susan  
 60035566, NC20  
 1705-7052 R

Env Program Consultant  
 Kiley, Andrew  
 60035524, NC18  
 1705-7052 R

Environmental Specialist II  
 Harvey, Bethany  
 60035557, NC14  
 1705-7052 R

**Winston-Salem RO**  
 Environmental Specialist II  
 Wanucha, David (Dave)  
 60035559, NC14  
 1705-7052 R

Environmental Specialist II  
 Ridings, Robert (Rob)  
 60035329, NC14  
 1705-7052 R

Environmental Specialist II  
 Conchilla, Ryan  
 60035543, NC14  
 1705-7052 R

Program Coordinator II  
 Carpenter, Kristilynn  
 60035534, NC14  
 1705-7052 R

**Asheville RO**  
 Environmental Specialist II  
 Mitchell, Kevin  
 60035546, NC14  
 1705-7052 R

**Wilmington RO**  
 Environmental Specialist II  
 Sprinkle, Hannah  
 60035558, NC14  
 1705-7052 R

**Mooreville RO**  
 Environmental Specialist II  
**VACANT**  
 60035560, NC14  
 1705-7052 R

**Washington RO**  
 Environmental Specialist II  
 Ward, Garcy  
 60035547, NC14  
 1705-7052 R

**Water Quality NPDES Permitting Branch Manager**  
 Engineering Supervisor I  
 Montebello, Michael  
 65034262. NC21

**Industrial Permitting Unit**  
 Environmental Program Sup II  
 Dowden, Douglas  
 60035473, NC20

**Municipal Permitting Unit**  
 Environmental Program Sup II  
**VACANT**  
 60035444, NC20

**Compliance & Expedited Permitting Unit**  
 Environmental Program Sup II  
 Hennessy, John  
 60035494, NC20

Engineer III  
 Chernikov, Sergei  
 60035357, NC20

Engineer III  
 Xiao, Min  
 65034428, NC20

Engineer III  
 Ori Tuvia  
 65034970, NC20  
 ARPA

Engineer I  
 Rezaei Adaryani,  
 Amirhossein  
 65022083, NC16

Engineer II  
 Fenton Brown  
 0035362, NC18

Env Program Consultant  
 Denard, Derek  
 65034433, NC18

Engineer I  
**VACANT**  
 65028376, NC16

Engineer I  
 Woodall, Al  
 0035359, NC16

Environmental Specialist II  
 Perlmutter, Gary  
 60035260, NC14

Engineer III  
**VACANT**  
 65034436, NC20

Engineer II  
 McGee, Thomas (Keyes)  
 65034263, NC18

Engineer II  
**VACANT**  
 65035084, NC18  
 ARPA

Engineer III  
 Nicholas, Coco  
 65035085, NC20  
 ARPA

Engineer III  
 Vacant  
 60035369, NC20

Engineer II  
 Vacant  
 60035361, NC18

Engineer I  
 Henriquez, Octavio  
 60035541, NC16

Environmental Specialist I  
 Matthew Neville  
 60035305, NC12

Engineer I  
 Marquan, Martin  
 65035083, NC16  
 ARPA

Environmental Specialist I  
 Corporon, Joe  
 60035365, NC12

Env. Specialist II  
 Carpenter, Sydney  
 60035333, NC14

Env. Specialist II  
 Weaver, Charles  
 65034434, NC14

Environmental Specialist II  
 Chen, Siying  
 65034973, NC14  
 2280 28A6 S (ARPA)

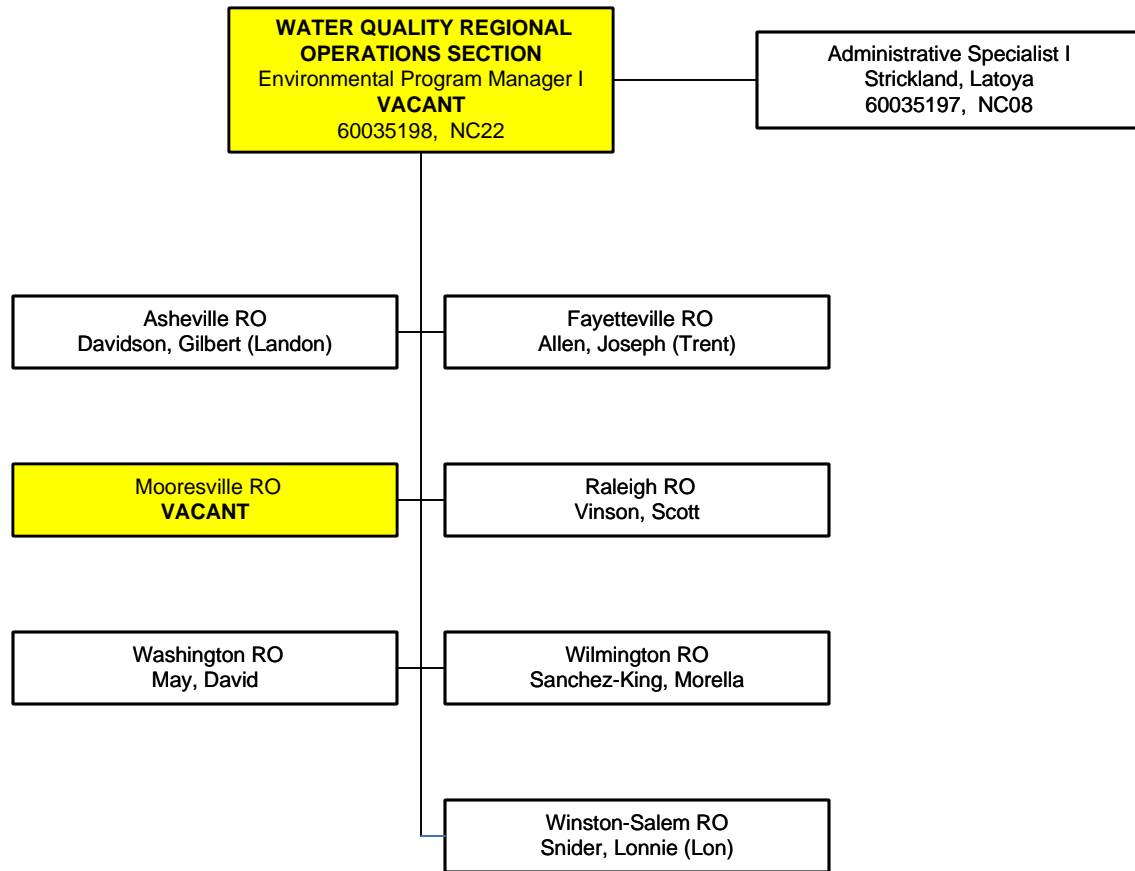
Environmental Specialist I  
 Catherine Shadwell  
 65022081, NC12

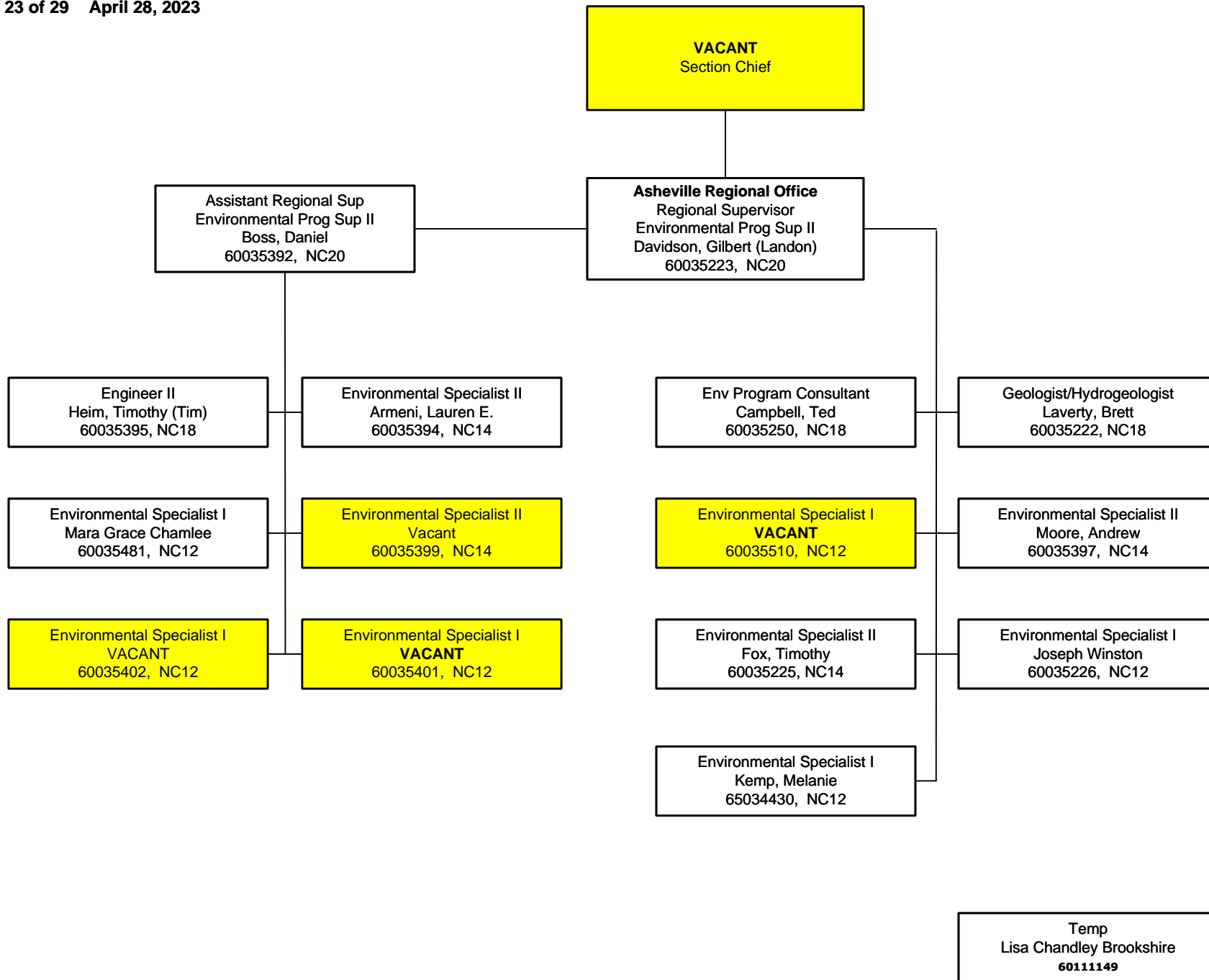
Environmental Specialist II  
 DelDuco, Emily  
 65028377, NC14

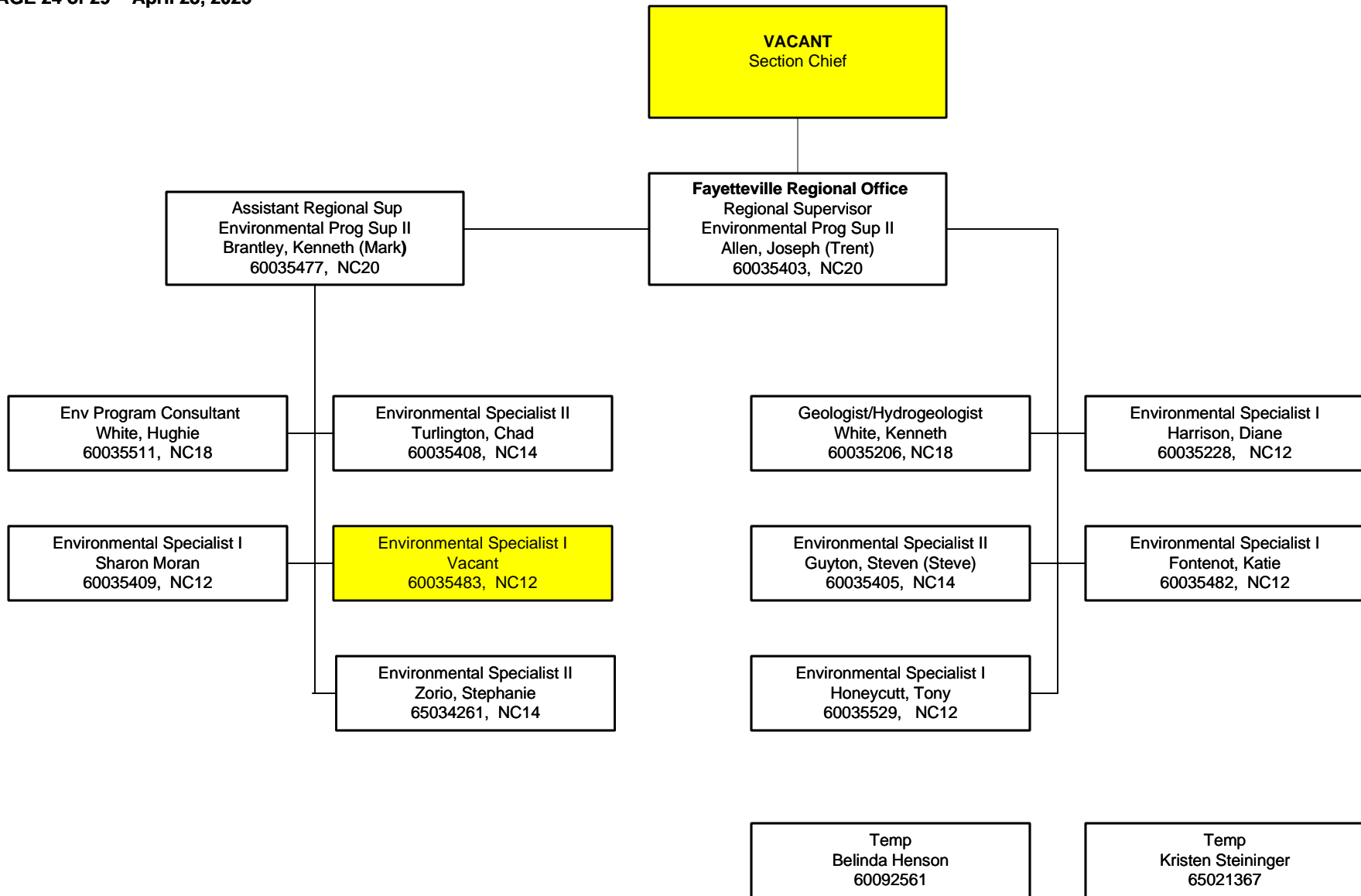
Environmental Specialist I  
**VACANT**  
 60035486, NC12

Temp  
 Joseph Kent Wiggins  
 60092692

Temp  
 Tilman Bradley Bennett  
 65001789









**VACANT**  
Section Chief

**Mooreville Regional Office**  
Regional Supervisor  
Environmental Prog Sup II  
**VACANT**  
60035455, NC20

Assistant Regional Sup  
Environmental Prog Sup II  
Pitner, Andrew  
60035230, NC20

Geologist/Hydrogeologist  
Costner, Brandy  
60035247, NC18

Geologist/Hydrogeologist  
Watson, Edward  
65022077, NC18

Environmental Specialist II  
**VACANT**  
60035231, NC14

Environmental Specialist I  
Schutte, Maria  
60035512, NC12

Environmental Specialist I  
**VACANT**  
60035484, NC12

Geologist/Hydrogeologist  
Harbison, Joanna  
65030776, NC18

Env Program Consultant  
Scheller, Roberto  
60090086, NC18

Engineer II  
**VACANT**  
60035372, NC18

Environmental Specialist II  
Parker, Tony  
60035413, NC14

Environmental Specialist II  
Bell, Wesley (Wes)  
60035418, NC14

Environmental Specialist I  
Ezell, Philip (Taylor)  
60035417, NC12

Environmental Specialist I  
**VACANT**  
60035465, NC12

Temp  
Michael Burkhard  
60111130

